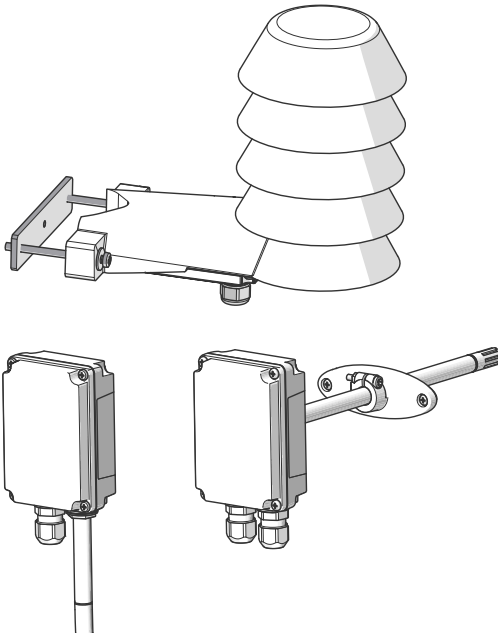


USER'S GUIDE

Vaisala HMDW110 Series Humidity and Temperature Transmitters



PUBLISHED BY

Vaisala Oyj

Street address: Vanha Nurmijärventie 21, FI-01670 Vantaa, Finland

Mailing address: P.O. Box 26, FI-00421 Helsinki, Finland

Phone: +358 9 8949 1

Fax: +358 9 8949 2227

Visit our Internet pages at www.vaisala.com.

© Vaisala 2015

No part of this manual may be reproduced, published or publicly displayed in any form or by any means, electronic or mechanical (including photocopying), nor may its contents be modified, translated, adapted, sold or disclosed to a third party without prior written permission of the copyright holder. Translated manuals and translated portions of multilingual documents are based on the original English versions. In ambiguous cases, the English versions are applicable, not the translations.

The contents of this manual are subject to change without prior notice.

This manual does not create any legally binding obligations for Vaisala towards customers or end users. All legally binding obligations and agreements are included exclusively in the applicable supply contract or the General Conditions of Sale and General Conditions of Service of Vaisala.

Table of Contents

1 General Information	3
About This Document	3
Documentation Conventions	3
Safety	4
ESD Protection	4
Recycling	4
Regulatory Compliances	5
Trademarks	5
Software License	5
Warranty	6
2 Product Overview	7
HMDW110 Series Overview	7
Output Parameters Explained	8
HMD110/112 Parts	9
HMW110/112 Parts	10
HMS110/112 Parts	11
Component Board	12
Analog Output Overage Behavior	13
3 Installation	14
Selecting Location	14
HMD110/112 Installation	15
HMW110/112 Installation	17
HMS110/112 Installation	18
Wiring HMDW110	20
Wiring Both Current Loops With a Single Power Supply	21
HMDW110 Power Supply Requirements	21
Wiring HMDW110 with RDP100	22
4 Service Port	23
Connecting to the Service Port	23
Terminal Application Settings	24
Serial Commands	25
Device Information and Status	27
Serial Line Output and Communication	30
Measurement Output	30
Measurement Output Format	32
Serial Line Communication	33
Analog output	36
Calibration and Adjustment Commands	39

Other Commands	42
5 Maintenance	44
Cleaning	44
Calibration and Adjustment	44
Adjustment Types	45
Adjustment Points	45
Calibration and Adjustment Using a Hand-Held Meter and a Reference Probe	46
One-Point Humidity Calibration and Adjustment Using a Hand-Held Meter and HMK15 Humidity Calibrator	48
Two-Point Humidity Calibration and Adjustment using a computer and a HMK15 Humidity Calibrator	49
Two-Point Temperature Calibration and Adjustment using a Computer	52
Replacing the HUMICAP® Sensor on HMD110/112 and HMW110/112	55
Replacing the HUMICAP® Sensor on HMS110/112	56
Filter Selection	57
6 Troubleshooting	58
Problem Situations	58
Error Messages	59
Unknown serial settings	60
Technical Support	60
7 Technical Data	61
Specifications	61
Dimensions	63
Spare Parts and Accessories	64

1

GENERAL INFORMATION

About This Document

This document provides information for installing, operating, and maintaining HMDW110 series transmitters.

Table 1 Version Information

Document Code	Description
M211726EN-C	This document. August 2015. Updated the temperature measurement accuracy specification to ± 0.2 °C at +20 °C (+68 °F). Added information about the different filter options (porous or membrane filter, depending on probe model).
M211726EN-B	Previous version. September 2014. Applicable from transmitter software version 1.0.7 onward. Added <code>cdatetime</code> and <code>ctext</code> commands. Added section Regulatory Compliances on page 5 . Updated section Troubleshooting on page 58 . Updated list of spare parts and accessories.
M211726EN-A	July 2014. First version.

Table 2 Related Documents

Document Code	Description
M211692EN	HMDW110 Series Quick Guide
M210297EN	HM70 User's Guide
M210185EN	HMK15 User's Guide
M211691EN	RDP100 User's Guide

Documentation Conventions



Warning alerts you to a serious hazard. If you do not read and follow instructions very carefully at this point, there is a risk of injury or even death.



Caution warns you of a potential hazard. If you do not read and follow instructions carefully at this point, the product could be damaged or important data could be lost.



Note highlights important information on using the product.

Safety

The HMDW110 series transmitter delivered to you has been tested for safety and approved as shipped from the factory. Note the following precautions:



Do not modify the unit. Improper modification can damage the product or lead to malfunction.

ESD Protection

Electrostatic Discharge (ESD) can cause immediate or latent damage to electronic circuits. Vaisala products are adequately protected against ESD for their intended use. It is possible to damage the product, however, by delivering electrostatic discharges when touching, removing, or inserting any objects inside the equipment housing.

To make sure you are not delivering high static voltages yourself, avoid touching exposed component contacts during installation and maintenance.

Recycling



Recycle all applicable material.



Dispose of the unit according to statutory regulations. Do not dispose of with regular household refuse.

Regulatory Compliances



HMDW110 series is in conformity with the following directives:

- RoHS-Directive
- EMC-Directive

The conformity is declared with using the following standards:

- EN 50581: Technical documentation for the assessment of electrical and electronic products with respect to the restriction of hazardous substances.
 - EN 61326-1: Electrical equipment for measurement, control, and laboratory use – EMC requirements – Immunity test requirements for equipment intended to be used in an industrial electromagnetic environment.
 - EN 55022: Information technology equipment – Radio disturbance characteristics – Limits and methods of measurement.
-

Trademarks

HUMICAP® is a registered trademark of Vaisala Oyj.

Windows® is a registered trademark of Microsoft Corporation.

All other trademarks referred to are the property of their respective owners.

Software License

This product contains software developed by Vaisala. Use of the software is governed by license terms and conditions included in the applicable supply contract or, in the absence of separate license terms and conditions, by the General License Conditions of Vaisala Group.

Warranty

Visit our Internet pages for more information and our standard warranty terms and conditions: www.vaisala.com/warranty.

Please observe that any such warranty may not be valid in case of damage due to normal wear and tear, exceptional operating conditions, negligent handling or installation, or unauthorized modifications. Please see the applicable supply contract or Conditions of Sale for details of the warranty for each product.

2

PRODUCT OVERVIEW

HMDW110 Series Overview

HMDW110 series transmitters are accurate humidity and temperature transmitters for measurements in HVAC and cleanroom applications. The series consists of the following models:

- HMD110/112 models for installation in ventilation ducts
- HMW110/112 models for wall installation
- HMS110/112 models for outdoor use

All models are loop-powered, with 2-wire current outputs for humidity and temperature. HMD112, HMW112, and HMS112 are standard models. HMD110, HMW110, and HMS110 are factory configurable models that are delivered with customer specific output settings, including calculated humidity parameters and special scaling of outputs.

HMDW110 series transmitters can be connected to Vaisala's RDP100 panel display for real-time viewing of the measurements. HMDW110 series can also supply the operating power to the display using only the loop power from the outputs.

Output Parameters Explained

HMDW110 series transmitters offer several output parameters. Relative humidity (RH) and temperature (T) are the measured parameters, the others are calculated based on RH and T.

Table 3 HMDW110 Series Output Parameters

Parameter	Symbol	Units	Description
Temperature	T	°C °F	Temperature in Celsius or Fahrenheit scale.
Relative humidity	RH	%	Ratio of the partial pressure of water vapor in the air to the saturation vapor pressure of air at current temperature.
Dewpoint	Td/f	°C °F	Temperature at which the water vapor in the air will condense into water at the current pressure. When the dewpoint is below 0 °C, the transmitter outputs frostpoint (Tf) instead of dewpoint.
Enthalpy	h	kJ/kg BTU/lb	Sum of the internal energy of a thermodynamic system.
Wet bulb temperature	Tw	°C °F	The minimum temperature that can be reached by evaporative cooling in the current conditions.



Check the type label on your transmitter to verify its output parameters and scaling of the output channels.

HMD110/112 Parts

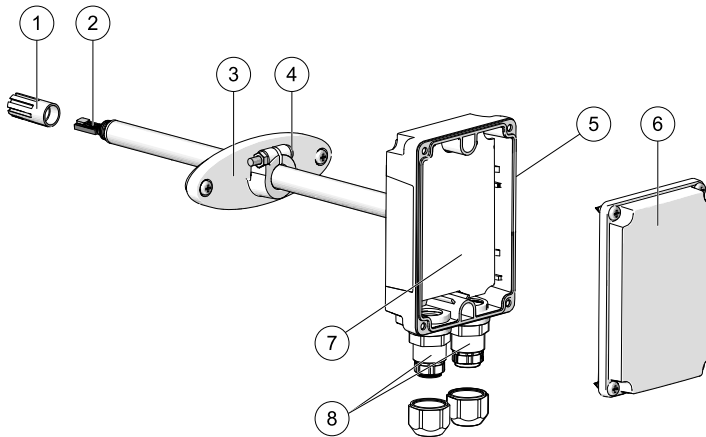


Figure 1 HMD110/112 Parts

- 1 = PTFE membrane filter (ASM210856SP).
- 2 = Sensors for humidity and temperature.
- 3 = Fastening flange.
- 4 = Tightening screw for fastening flange.
- 5 = Type label.
- 6 = Transmitter cover.
- 7 = Component board. See [Component Board on page 12](#).
- 8 = Cable glands for 4 ... 8 mm diameter cable.

HMW110/112 Parts

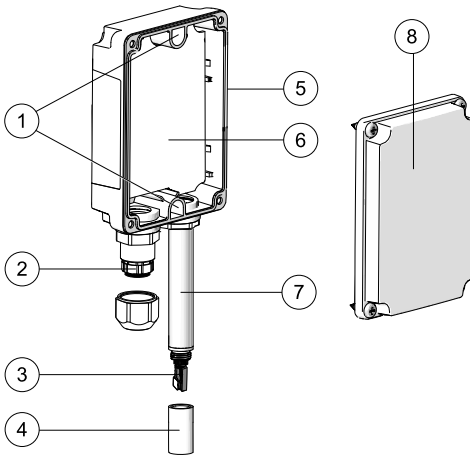


Figure 2 HMW110/112 Parts

- 1 = Screw holes for mounting (2 pcs).
- 2 = Cable gland for 4 ... 8 mm diameter cable.
- 3 = Sensors for humidity and temperature.
- 4 = Porous PTFE filter (DRW239993SP).
- 5 = Type label.
- 6 = Component board. See [Component Board on page 12](#).
- 7 = Probe.
- 8 = Transmitter cover with captive screws.

HMS110/112 Parts

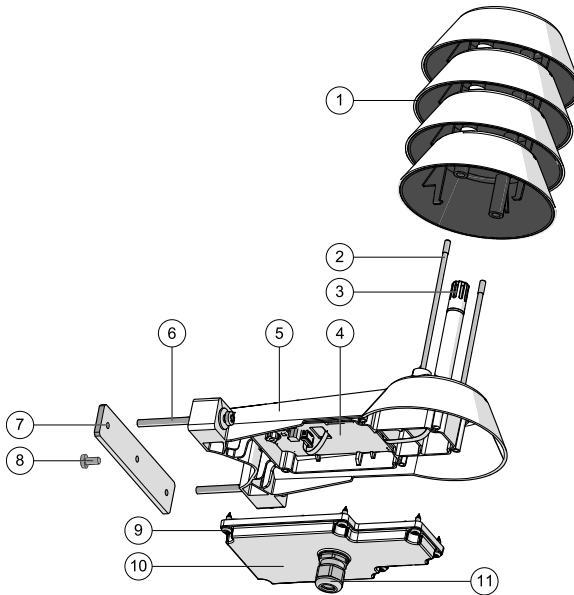


Figure 3 HMS110/112 Parts

- 1 = Radiation shield. Do not remove for installation, only when replacing the sensor or filter.
- 2 = Long screws that keep the radiation shield in place (2 pcs), 3 mm hex socket.
- 3 = Sensors for humidity and temperature under PTFE membrane filter (ASM210856SP).
- 4 = Component board. See [Component Board on the next page](#).
- 5 = Transmitter body.
- 6 = Screws for pole mounting (2 pcs, medium size Pozidriv).
- 7 = Clamp for pole mounting. The holes are threaded for the included pole mounting screws and set screw.
- 8 = Set screw (medium size Pozidriv). Install after pole mounting to stop the transmitter from turning.
- 9 = Medium size crosshead screws (6 pcs).
- 10 = Transmitter cover.
- 11 = Cable gland. Suitable for 4 ... 8 mm diameter cable.

Component Board

All HMDW110 transmitter models use the same component board and have two 4 ... 20 mA outputs (loop powered). There is also a service port for configuration and calibration use.

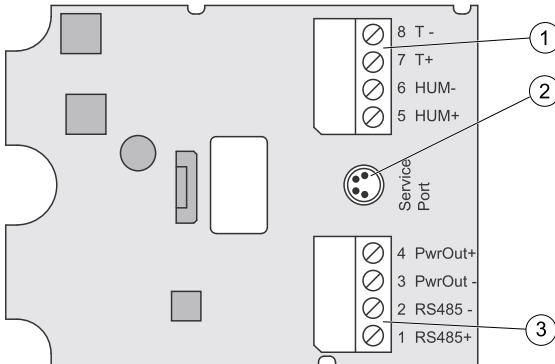


Figure 4 HMDW110 Series Component Board

- 1 = Terminal block for 4 ... 20 mA current loop outputs.
- 2 = Service port connector (4-pin M8).
- 3 = Terminal block for RS-485 output to RDP100 display panel (optional).



You can pull out the terminal blocks from the component board for easier installation, and to disconnect the transmitter from power and RS-485 when using the service port.

Analog Output Overage Behavior

Analog outputs of the HMDW100 series transmitters have a defined behavior when the values measured by the transmitter are outside the scaled analog output range:

- Output is clipped at the end of the scaled output range.
- You can allow the output exceed the scaled range by 10% with the `aover` serial command.
- Output is set to error state (default 3.6 mA) if an error is active (for example, due to sensor damage). You can change the error state using the `aerr` command.

For configuration of the analog outputs using serial commands, see section [Analog output on page 36](#).

3

INSTALLATION

Selecting Location

When mounting duct model transmitters:

- Avoid installing in a location where condensation may fall on the sensor inside the duct.
- Position the sensor in the center of the duct.
- Select a site where the transmitter can be installed horizontally, onto the side of the duct. Do not point the probe downward, as this will make condensation run down to the sensor.

When mounting wall model transmitters:

- Select a location that represents well the area of interest.
- Do not install on the ceiling.
- Avoid placing the transmitter near heat and moisture sources, close to the discharge of the supply air ducts, and in direct sunlight.

When mounting outdoor transmitters:

- Install in a location with a good airflow around the transmitter.
- Avoid placing the transmitter near windows, air conditioning units, or other heat and moisture sources such as cooling towers.
- Install the transmitter at least 2.5 m above ground level.

HMD110/112 Installation



- Medium size crosshead screwdriver (Pozidriv) for screws on cover and flange.
- Small slotted screwdriver for screw terminals.
- Drill with 2.5 mm and 13 mm bits for making the installation holes.
- Tools for cutting and stripping wires.
- 19 mm open-end wrench for tightening the cable gland.

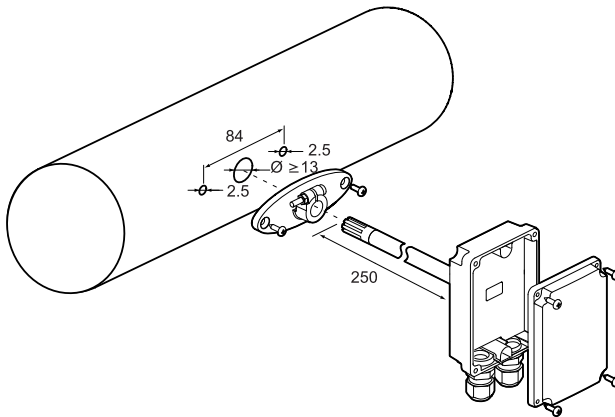


Figure 5 HMD110/112 Installation

1. Remove the yellow transport protection cap and separate the fastening flange from the transmitter.
2. Use the flange to mark the location and size of the installation holes on the side of the duct.
3. Drill the installation holes in the duct. Secure the fastening flange to the duct with the two screws (included).

4. Push the probe of the transmitter through the flange and into the duct. The probe should reach far enough so that the sensor is located in the middle of the duct.

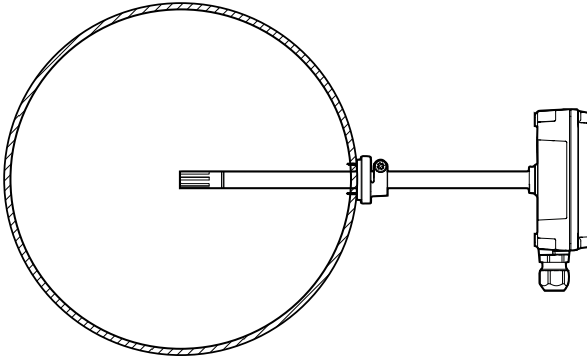


Figure 6 HMD110/112 Centering Inside Duct

5. Secure the transmitter to the flange by tightening the screw on the flange that holds the probe in place.
6. Open the transmitter cover, and route the cables through the cable glands. Connect the wires to the screw terminals according to the wiring instructions:
 - o [Wiring HMDW110 on page 20](#)
 - o [Wiring HMDW110 with RDP100 on page 22](#)

For the arrangement of the screw terminals, see section [Component Board on page 12](#).

7. Tighten the cable gland(s) and close the transmitter cover.

HMW110/112 Installation



- Medium size crosshead screwdriver (Pozidriv) for cover screws.
- Small slotted screwdriver for screw terminals.
- Two installation screws: $\text{Ø} \leq 3.5$ mm, head $\text{Ø} \leq 8$ mm.
- Depending on the wall material and screw type, you may need a drill and a suitable drill bit to make installation holes for screws.
- Tools for cutting and stripping wires.
- 19 mm open-end wrench for tightening the cable gland.

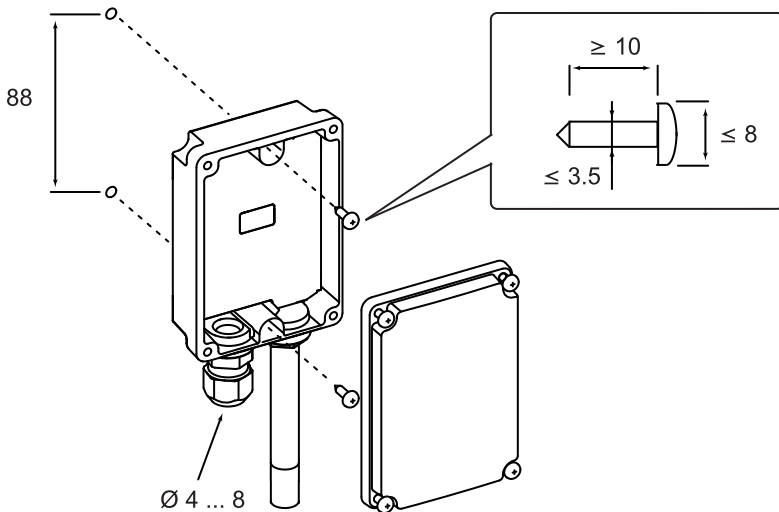


Figure 7 HMW110/112 Installation

1. Open the transmitter cover and use two screws (not included) to attach the transmitter to the wall. The probe and cable gland should point down.

2. Open the transmitter cover, and route the cable through the cable gland. Connect the wires to the screw terminals according to the wiring instructions:
 - [Wiring HMDW110 on page 20](#)
 - [Wiring HMDW110 with RDP100 on page 22](#)

For the arrangement of the screw terminals, see section [Component Board on page 12](#).

3. Tighten the cable gland and close the transmitter cover.
4. Remove the yellow transport protection cap from the probe.

HMS110/112 Installation



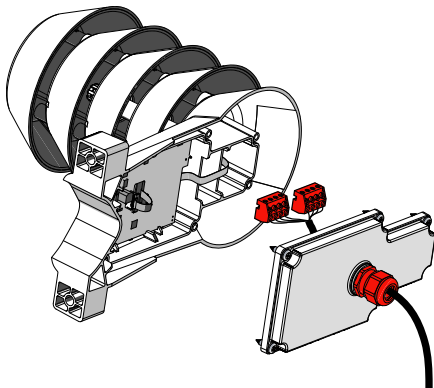
- Medium size crosshead screwdriver (Pozidriv).
- Small slotted screwdriver for screw terminals.
- Tools for cutting and stripping wires.
- 19 mm open-end wrench for tightening the cable gland.

Additional tools for pole installation:

- Zip ties for securing the cable to the pole.

Additional tools for wall installation:

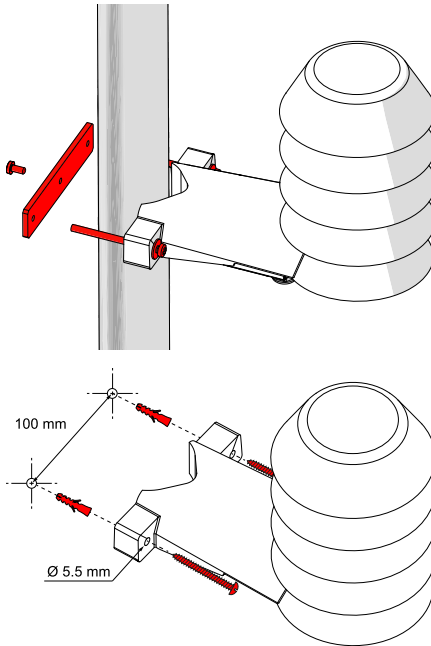
- Drill and bits.
- Screws (2 pcs, $\varnothing < 5.5$ mm) and wall plugs.
- Cable clips for securing the cable to the wall.

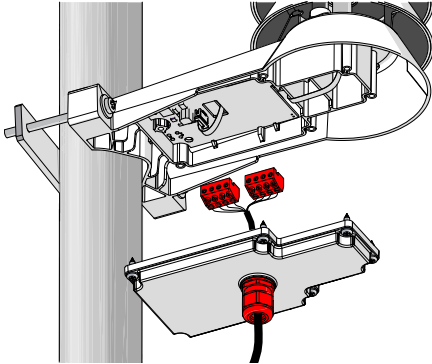


1. Open the six screws that hold the transmitter cover.
2. Route the power and signal cable through the cable gland, and connect the wires to the screw terminals according to the wiring instructions:
 - [Wiring HMDW110 on page 20](#)
 - [Wiring HMDW110 with RDP100 on page 22](#)

For the arrangement of the screw terminals, see section [Component Board on page 12](#).

3. Adjust the length of cable between the cable gland and the terminal blocks. Make the cable short enough to close the cover without leaving a cable loop in the transmitter.
4. Disconnect the wired screw terminal blocks by pulling them off from the component board.
5. Mount the transmitter according to the type of the installation site:
 - Pole installation
 - a. Use the supplied clamp and screws to mount the transmitter on a pole.
 - b. To prevent the transmitter from turning on the pole, tighten the set screw on the center hole of the clamp.
 - Wall installation
 - a. Drill two holes for wall plugs 100 mm apart.
 - b. Place the wall plugs in the holes.
 - c. Mount the transmitter using two screws of sufficient length.





6. Plug in the screw terminal blocks, close the cover, and tighten the screws.
7. Secure the cable to the pole using a zip tie, or on the wall using cable clips. Allow some cable to hang down from the cable gland to prevent water from entering the transmitter along the cable.

Wiring HMDW110

You must always connect the humidity measurement current loop (HUM, terminals 5 and 6) to power the transmitter. Connecting the temperature measurement current loop (terminals 7 and 8) is optional.

$2 \times 4 \dots 20 \text{ mA}$
 $R_L = 0 \dots 600 \Omega$

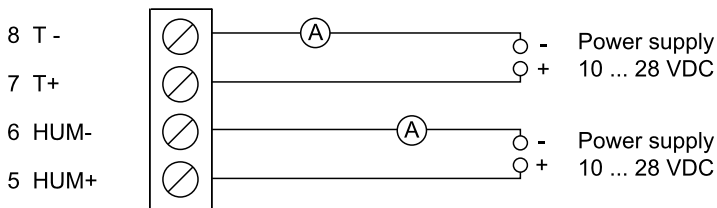


Figure 8 HMDW110 Wiring



Terminals 1 ... 4 are for use with the RDP100 remote display panel. For wiring instructions, see section [Wiring HMDW110 with RDP100 on page 22](#).

Wiring Both Current Loops With a Single Power Supply

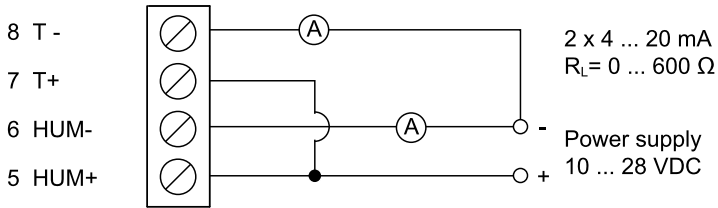


Figure 9 HMDW110 Wiring with Single Power Supply

HMDW110 Power Supply Requirements

HMDW110 series transmitters are designed for a supply voltage range of 10 ... 28 VDC. The minimum required voltage depends on the loop resistance (0 ... 600 Ω) as shown below.

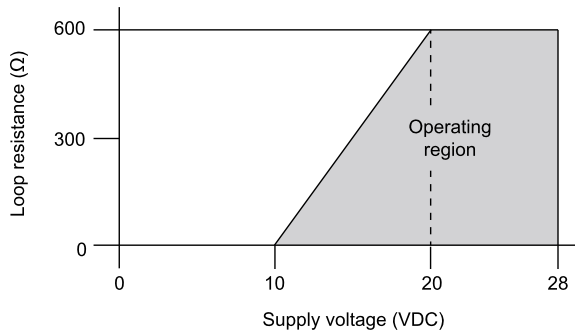


Figure 10 HMDW110 Supply Voltage Operating Region

Wiring HMDW110 with RDP100

You must always connect the humidity measurement current loop (HUM, terminals 5 and 6) to power the transmitter. Connecting the temperature measurement current loop (terminals 7 and 8) is optional.

Connect the RDP100 Remote Display Panel using terminals 1 ... 4. The HMDW110 series transmitter provides both power and data to the RDP100.

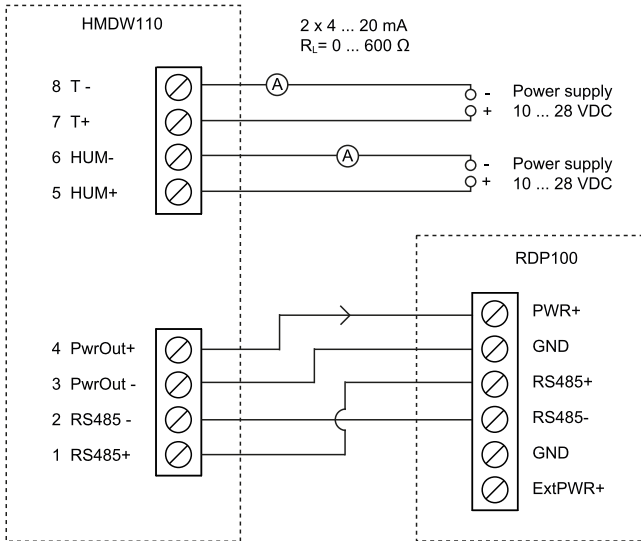


Figure 11 HMDW110 Wiring with RDP100 Remote Display Panel



When using the RDP100 with HMDW110 series transmitters, do not connect the Extpwr jumper to the RDP100 component board.

4

SERVICE PORT

Connecting to the Service Port



- Computer with
 - Windows operating system
 - Terminal application
 - Free USB port
 - Driver for Vaisala USB cable installed
- Vaisala USB cable for computer connection (219690)

OR

- Vaisala MI70 Hand-Held Indicator
- MI70 connection cable (219980SP)

The service port is intended for a temporary connection to the transmitter. You can use it for configuration, calibration, and troubleshooting using a computer or a compatible hand-held meter that utilizes the MI70 hand-held indicator (for example, HM70).

The RS-485 line of the service port is shared with the connection to RDP100 display panel; the M8 service port connector is just an additional connector for easier access. Before plugging in a connection cable to the service port, perform the following steps:

1. Open the cover of the HMDW110 series transmitter.
2. If the terminal block for terminals 5 ... 8 is wired, pull it out. This disconnects the transmitter from supply voltage and prevents possible equipment damage that may be caused by ground loops. The locations of the terminal blocks and the service port are shown in section [Component Board on page 12](#).
3. If the other terminal block is wired (terminals 1 ... 4), pull it out also. This prevents the communication between the transmitter and RDP100 remote display panel from interfering with your connection.

Terminal Application Settings

You need a terminal application to be able to use the service port commands of the HMDW110 series transmitter. You can download the PuTTY terminal application from www.vaisala.com or use a terminal application of your choice.

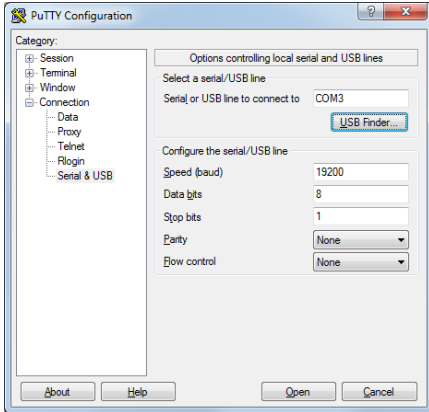


Figure 12 PuTTY Terminal Application

Before starting a terminal session, you must set the following parameters:

- **Serial line settings.** The default serial line settings of a HMDW110 series transmitter are **19200 N 8 1**:
 - 19200 bits per second
 - No parity
 - Eight data bits
 - One stop bit
- **Number of the virtual COM port** that has been created for your cable by the Vaisala USB driver. You can check which port the USB cable is using with the **Vaisala USB Device Finder** application that has been installed in the Windows Start menu. You can also access the USB finder directly from the Vaisala-supplied PuTTY application by clicking on the **USB Finder...** button on the **Serial & USB** tab.



The default serial line settings are needed for compatibility with the RDP100 remote display panel. If you are not using the display, you can change the settings using the `seri` command. Note that the service port settings will also change.

Serial Commands

The notation `<cr>` refers to the carriage return control character, which you can send in a terminal application by pressing enter on your keyboard. Before entering commands, send a `<cr>` to clear the command buffer.

You can enter the commands in uppercase or lowercase. In the command examples, the keyboard input by the user is in **bold type**.

Table 4 HMDW110 Serial Commands

Command	Description	Page
Device information and status		
<code>?</code>	Show device information.	27
<code>??</code>	Show device information (will respond in poll mode).	27
<code>errs</code>	Show active errors.	28
<code>help</code>	Show list of serial commands.	29
<code>system</code>	Show firmware information.	29
<code>time</code>	Show transmitter uptime (time since last reset).	30
Serial line output and communication		
<code>addr</code>	Show or set device address.	34
<code>close</code>	Close connection to device in POLL mode.	34
<code>form</code>	Set output format of measurement messages.	32
<code>intv</code>	Set measurement output interval.	31
<code>open</code>	Open connection to device in POLL mode.	33
<code>r</code>	Start continuous output of measurement messages.	30
<code>s</code>	Stop continuous output of measurement messages.	31
<code>sdelay</code>	Show or set serial line turnaround delay.	35
<code>send</code>	Output one measurement message.	30
<code>seri</code>	Set serial line settings. Default is 19200 N 8 1.	34
<code>smode</code>	Set serial line operation mode.	35
<code>unit</code>	Set units to metric (m) or non-metric (n).	32
Analog output		
<code>aerr</code>	Show or set error level for analog output.	36
<code>amode</code>	Show analog output settings.	36
<code>aover</code>	Enable or disable analog output 10% over range.	36
<code>asel</code>	Show or set analog output parameters and scaling.	37
<code>atest</code>	Test analog outputs by forcing them to a given value.	38

Command	Description	Page
Calibration and adjustment		
<code>cdate</code>	Show or set adjustment date.	39
<code>crh</code>	User calibration for humidity measurement.	39
<code>crhclr</code>	Clear user calibration for humidity measurement. Factory calibration remains.	39
<code>ct</code>	User calibration for T measurement.	40
<code>ctclr</code>	Clear user calibration for temperature measurement. Factory calibration remains.	40
<code>ctext</code>	Show or set adjustment information text.	40
<code>fcrh</code>	Two-point calibration after humidity sensor change.	41
<code>l</code>	Show adjustment offset and gain.	41
<code>li</code>	Set adjustment offset and gain.	42
Other commands		
<code>filt</code>	Show or set measurement filtering.	42
<code>frestore</code>	Restore factory settings. Clears all user settings, factory calibration remains.	43
<code>reset</code>	Reset the device.	43

Device Information and Status

Table 5 ? Command

Syntax	Description
?<cr>	Show listing of device information.
??<cr>	Show listing of device information even if device is in poll mode and connection has not been opened using the <code>open</code> command.
<p>Example:</p> <pre> ? HMD112 / 1.0.6 Serial number : H0134007 Batch number : H0130002 Sensor number : H0090003 Sensor model : Humicap 180R Order code : HMD1102A1VA1 Cal. date : 20140619 Cal. info : VAISALA/HEL Time : 01:43:43 Serial mode : STOP Baud P D S : 19200 N 8 1 Output interval: 5 S Serial delay : 25 Address : 0 Filter : 1.000 Ch1 output : 4 ... 20 mA Ch2 output : 4 ... 20 mA Ch1 RH lo : 0.00 %RH Ch1 RH hi : 100.00 %RH Ch2 T lo : -40.00 'C Ch2 T hi : 60.00 'C </pre>	

Table 6 Errs Command

Syntax	Description
<code>errs<cr></code>	<p>Show active error(s). Possible error messages are listed below. For more information, see Error Messages on page 59.</p> <ul style="list-style-type: none">■ No errors■ T meas error■ F meas error■ RH sensor failure■ Ambient temperature error■ Program flash check sum error■ Parameter flash check sum error<ul style="list-style-type: none">○ INFOA check sum error○ SCOEFS check sum error○ CURRENT check sum error■ Unknown error
<p>Example (no active errors):</p> <pre>errs 0000h No errors</pre>	

Table 7 Help Command

Syntax	Description
help<cr>	Show list of currently available serial commands.
<p>Example:</p> <pre> help ? ?? ADDR AERR AMODE AOVER ASEL ATEST CDATE CLOSE CRH CRHCLR CT CTCLR CTEXT ERRS FCRH FILT FORM FRESTORE HELP INTV L LI OPEN R RESET SDELAY SEND SERI SMODE SYSTEM TIME UNIT </pre>	

Table 8 System Command

Syntax	Description
system<cr>	Show firmware information.
<p>Example:</p> <pre> vers Device Name : HMD112 Copyright : Copyright (c) Vaisala Oyj 2013. All rights reserved. SW Name : HMD112 SW date : 2014-04-14 SW version : 1.0.6 </pre>	

Table 9 Time Command

Syntax	Description
time<cr>	Show transmitter uptime (time since last reset) in hh:mm:ss.
Example:	
<pre>time Time : 00:54:51</pre>	

Serial Line Output and Communication

Measurement Output

Table 10 Send Command

Syntax	Description
send<cr>	Output a single measurement message.
send [aaa]<cr>	Output a single measurement message from the device with the defined address: aaa = address of target device, range 0...255.
Example:	
<pre>send 5 T= 22.8 'C RH= 39.8 %RH Td= 8.4 'C Tw= 14.6 'C h= 40.5 kJ/kg</pre>	

Table 11 R Command

Syntax	Description
r<cr>	Start the continuous outputting of measurement values as an ASCII text string to the serial line.
Example (measurement message in default format):	
<pre>r T= 22.8 'C RH= 39.5 %RH Td= 8.3 'C Tw= 14.5 'C h= 40.4 kJ/kg T= 22.8 'C RH= 39.5 %RH Td= 8.3 'C Tw= 14.5 'C h= 40.4 kJ/kg ...</pre>	

Table 12 S Command

Syntax	Description
<code>s<cr></code>	Stop the continuous outputting of measurement values.
<p>Example:</p> <pre> ... T= 22.8 'C RH= 39.5 %RH Td= 8.3 'C Tw= 14.5 'C h= 40.4 kJ/kg T= 22.8 'C RH= 39.5 %RH Td= 8.3 'C Tw= 14.5 'C h= 40.4 kJ/kg s </pre>	



Since the interface is half-duplex, you must enter the `s` command when the device is not outputting.

Table 13 Intv Command

Syntax	Description
<code>intv<cr></code>	Show the output interval of the automatically repeating measurement messages (<code>r</code> command and run mode).
<code>intv [iii u]<cr></code>	<p>Set the output interval.</p> <p><code>iii</code> = interval, range 0 ... 255.</p> <p><code>u</code> = unit for interval setting:</p> <ul style="list-style-type: none"> ■ <code>s</code> = seconds ■ <code>m</code> = minutes ■ <code>h</code> = hours <p>If you set the interval to 0, the output messages are output as quickly as they are generated, without additional delay.</p>
<p>Example:</p> <pre> intv 5 s Output interval: 5 S </pre>	

Measurement Output Format

Table 14 Unit Command

Syntax	Description
<code>unit<cr></code>	Show current setting of the unit command.
<code>unit [m n]<cr></code>	Set types of units used on the serial line. m = metric units, for example, Celsius n = non-metric units, for example, Fahrenheit
<p>Example (set units to non-metric):</p> <pre>unit n Units : Non metric</pre>	

Table 15 Form Command

Syntax	Description
<code>form<cr></code>	Show the currently used measurement format.
<code>form /<cr></code>	Reset measurement format to default.
<code>form [sss]<cr></code>	Set a new measurement format. sss = String consisting of modifiers and abbreviations for measured parameters. See Table 16 on the facing page and Table 17 on the facing page . Maximum length 127 characters.
<p>Example: show currently used measurement format (default format shown):</p> <pre>form 3.1 "T=" T " " U3 3.1 "RH=" RH " " U4 3.1 "Td=" Td " " U3 3.1 "Tw=" Tw " " U3 4.1 "h=" h " " U7 \r \n</pre> <p>Output example:</p> <pre>send T= 25.1 'C RH= 39.4 %RH Td= 10.3 'C Tw= 16.2 'C h= 45.1 kJ/kg</pre> <p>Example: set output format as RH and T, with start of text (ASCII character 002) and end of text (003) ASCII codes, and without line feed and carriage return at the end:</p> <pre>form #002 3.1 "RH=" RH U4 3.1 "T=" T " " U3 #003 OK</pre> <p>Output example (ASCII codes not visible here):</p> <pre>send RH= 39.3%RH T= 25.1 'C</pre>	

Table 16 Output Parameters for Form Command

Measured Parameter	Abbreviation in Form Command
Temperature	t
Relative humidity	rh
Dewpoint	td
Enthalpy	h
Wet bulb temperature	tw

Table 17 Modifiers for Form Command

Modifier	Description
x.y	Length modifier (number of digits and decimal places).
\t	Tabulator.
\r	Carriage return.
\n	Line feed.
\xxx	ASCII character with decimal code xxx.
""	String constant.
ux	Name of the measurement unit using x number of characters. For example, u3 shows the name of the measurement unit with three characters.
addr	Transmitter address.
sn	Transmitter serial number.
time	Time since transmitter was started or reset.
cs4	Modulus-65536 checksum of message sent so far, ASCII encoded hexadecimal notation.
csx	NMEA xor-checksum of message sent so far, ASCII encoded hexadecimal notation



You can also use the hash character # instead of the backslash character \.

Serial Line Communication

Table 18 Open Command

Syntax	Description
open [aaa]<cr>	Open a connection to a device at the specified address. Required when device is in poll mode. Address range 0 ... 255.
<p>Example:</p> <pre>open 5 HMD112 5 line opened for operator commands</pre>	

Table 19 Close Command

Syntax	Description
close<cr>	Close the connection that was opened with the open command.
Example: <pre>close line closed</pre>	

Table 20 Addr Command

Syntax	Description
addr<cr>	Show current device address and prompt for a new address.
addr [aaa]<cr>	Set new device address. aaa = 0 ... 255.
Example (shows 0 as current address, enter 5 as the new address): <pre>addr Address : 0 ? 5</pre>	

Table 21 Seri Command

Syntax	Description
seri<cr>	Show current serial line settings.
seri [baud p d s]<cr>	Set new serial line settings for RS-485 line (also affects the service port). The new settings are taken into use when the device is reset or powered up. baud = baud rate (9600, 19200, or 38400). p = parity <ul style="list-style-type: none"> ■ n = none ■ e = even ■ o = odd d = data bits (7 or 8). s = stop bits (1 or 2).
Example (show current serial line settings): <pre>seri Baud P D S : 19200 N 8 1</pre>	



Keep the serial line settings at default (19200 N 8 1) for compatibility with the RDP100 remote display panel.

Table 22 Sdelay Command

Syntax	Description
<code>sdelay<cr></code>	Show serial line delay (response time).
<code>sdelay [ddd]<cr></code>	Set serial line delay (response time). ddd = delay, range 0 ... 255. Corresponds to 0 ... 1020 milliseconds.
<p>Example (set serial line delay to 200 milliseconds):</p> <pre>sdelay 50 Serial delay : 50</pre>	

Table 23 Smode Command

Syntax	Description
<code>smode<cr></code>	Show current start-up operating mode of the serial line, and prompt to enter new mode. New mode is taken into use when the device is reset or powered up.
<code>smode [mode]<cr></code>	Set serial line start-up operating mode. Available modes are: stop = No automatic output. All commands available. Default mode. run = Automatic output of measurement messages. You must stop output with the <code>s</code> command before entering other commands. poll = No automatic output. Will respond to addressed <code>send</code> command and <code>??</code> command. You can use other commands after opening a connection using an addressed <code>open</code> command.
<p>Example (set device to poll mode):</p> <pre>smode Serial mode : STOP ? poll</pre>	

Analog output

Table 24 Aerr Command

Syntax	Description
<code>aerr ?<cr></code>	Show currently set analog output error level for both channels.
<code>aerr<cr></code>	Show currently set analog output error levels, prompt to enter new values.
<code>aerr [ch1] [ch2]<cr></code>	Set error level for both channels without prompting. ch1 = error level for analog output channel 1 in mA. ch2 = error level for analog output channel 2 in mA.
<p>Example (set error level for both analog output channels to 21 mA):</p> <pre>aerr Ch1 error out : 3.600 I ? 21 Ch2 error out : 3.600 I ? 21</pre>	

Table 25 Amode Command

Syntax	Description
<code>amode<cr></code>	Show currently set analog output mode.
<p>Example:</p> <pre>amode Ch1 output : 4 ... 20 mA Ch2 output : 4 ... 20 mA</pre>	

Table 26 Aover Command

Syntax	Description
<code>aover<cr></code>	Show current aover status.
<code>aover [on off]<cr></code>	Set analog output overrange to: on = Allow output to exceed the scaled range by 10%. off = Keep the analog output always in the scaled range. Note that error state behavior overrides this setting.
<p>Example (enable 10% overrange for analog outputs):</p> <pre>aover on AOVER : ON</pre>	

Table 27 Ase1 Command

Syntax	Description
ase1 ?<cr>	Show currently set analog output parameters and scaling.
ase1<cr>	Show currently set analog output parameters and scaling, prompt to enter new scaling values.
ase1 [ch1 ch2]<cr>	Set new output parameters for both channels, prompt to enter new scaling values. Selectable parameters for ch1 and ch2 are: t = temperature rh = relative humidity td = dewpoint h = enthalpy tw = wet bulb temperature
ase1 [ch1 ch2 [ch1lo ch1hi ch2lo ch2hi]]<cr>	Set analog output parameters and scaling for both channels without prompting. ch1 = Output parameter for channel 1. Parameters as above. ch2 = Output parameter for channel 2. Parameters as above. ch1lo = Low limit for channel 1 scaling. ch1hi = High limit for channel 1 scaling. ch2lo = Low limit for channel 2 scaling. ch2hi = High limit for channel 2 scaling.
Example (show current analog output parameters and scaling):	
<pre> ase1 ? Ch1 RH lo : 0.00 %RH Ch1 RH hi : 100.00 %RH Ch2 T lo : -40.00 'C Ch2 T hi : 60.00 'C </pre>	

Table 28 Atest Command

Syntax	Description
atest [ch1 ch2]<cr>	Set analog channels to defined output value (in mA). ch1 = Output value for channel 1. ch2 = Output value for channel 2.
atest<cr>	End analog output testing mode, return outputs to normal.
<p>Example (set both channels to 20 mA, then return them to normal measurement):</p> <pre> atest 20 20 20.000 26393 20.000 26393 atest 6.694 26393 12.297 26393 </pre>	

Calibration and Adjustment Commands



Before using the calibration and adjustment commands, read through section [Calibration and Adjustment on page 44](#).

Table 29 Cdate Command

Syntax	Description
<code>cdate<cr></code>	Show currently stored calibration date.
<code>cdate [yyyymmdd]<cr></code>	Set a new calibration date. yyyymmdd = Date in format year (yyyy) month (mm) date (dd).
Example (set calibration date to June 1st, 2014): <pre>cdate 20140601 Cal. date : 20140601</pre>	

Table 30 Crh Command

Syntax	Description
<code>crh<cr></code>	Start the two-point humidity calibration and adjustment sequence. For a full adjustment procedure, see section Two-Point Humidity Calibration and Adjustment using a computer and a HMK15 Humidity Calibrator on page 49 .
<code>crh [ref]<cr></code>	Perform a one-point adjustment at the current relative humidity. The device calculates the required correction based on the reference humidity that you enter. <code>ref</code> = the correct relative humidity at the environment where the sensor is now.
Example : <pre>crh RH : 11.5379 1. ref ? 11.3 Press any key when ready ... RH : 74.9684 2. ref ? 75.4 OK</pre>	

Table 31 Crhclr Command

Syntax	Description
<code>crhclr<cr></code>	Clear the current user adjustment for humidity. Factory calibration remains.
Example: <pre>crhclr OK</pre>	

Table 32 Ct Command

Syntax	Description
ct<cr>	Start the two-point temperature calibration and adjustment sequence. For a full adjustment procedure, see section Two-Point Temperature Calibration and Adjustment using a Computer on page 52 .
ct [ref]<cr>	Perform a one-point adjustment at the current temperature. The device calculates the required correction based on the reference temperature that you enter. ref = the correct temperature (in degrees Celcius) at the environment where the sensor is now.
<p>Example :</p> <pre>ct T : 22.9424 1. ref ? 23.0 Press any key when ready ... T : 54.9873 2. ref ? 55 OK</pre>	

Table 33 Ctclr Command

Syntax	Description
ctclr<cr>	Clear the current user adjustment for temperature. Factory calibration remains.
<p>Example:</p> <pre>ctclr OK</pre>	

Table 34 Ctext Command

Syntax	Description
ctext<cr>	Show currently stored calibration text.
ctext [sss]<cr>	Set a new calibration text. sss = Text string, maximum length 24 characters.
<p>Example (set calibration text to Lab1/John):</p> <pre>ctext Lab1/John Cal. info : Lab1/John</pre>	

Table 35 Fcrh Command

Syntax	Description
fcrh<cr>	Start the two-point humidity calibration and adjustment sequence. If you have changed the humidity sensor of the device yourself, you must perform a two-point humidity calibration and adjustment using this command. Follow the procedure in section Two-Point Humidity Calibration and Adjustment using a computer and a HMK15 Humidity Calibrator on page 49.
<p>Example:</p> <pre> fcrh RH : 11.3143 1. ref ? 11.3 Press any key when ready ... RH : 75.0012 2. ref ? 75.4 OK </pre>	

Table 36 L Command

Syntax	Description
l<cr>	Show the current offset and gain parameters for user adjustment. This command is useful for checking if user adjustments have been applied for humidity and temperature measurement.
<p>Example (shows default state without user adjustments - offset is 0 and gain is 1 for both humidity (Cp offset and gain) and temperature):</p> <pre> l Cp offset : 0.00000000E+00 Cp gain : 1.00000000E+00 T offset : 0.00000000E+00 T gain : 1.00000000E+00 </pre>	

Table 37 Li Command

Syntax	Description
li<cr>	<p>Enter values for offset and gain parameters for user adjustment. Useful for restoring some earlier state of user adjustment.</p> <hr/> <p>Use this command only to restore values you have previously written down based on the output from the <code>l</code> command, or to restore the default offset and gain.</p> <hr/>
<p>Example (shows adjustment has been applied to humidity measurement offset, overwrites it with 0):</p> <pre>li Cp offset : -1.50922060E-01 ? 0 Cp gain : 1.00000000E+00 ? T offset : 0.00000000E+00 ? T gain : 1.00000000E+00 ?</pre>	

Other Commands

Table 38 Filt Command

Syntax	Description
filt [f.fff]<cr>	<p>Set the speed at which the latest measurement result is integrated into the humidity and temperature readings. The command affects both analog output and serial line output.</p> <p><i>f.fff</i> = Measurement filtering setting, range 0.001 ... 1.0.</p> <ul style="list-style-type: none"> ■ 1.0 = No filtering, latest measurement is output without averaging ■ 0.5 = Average of last two measurements ■ 0.1 = Average of approximately 16 measurements
filt<cr>	View the current setting. Also prompts you to enter a new value.
<p>Example (view the current value and set filtering to value 0.5):</p> <pre>filt Filter : 1.000 ? 0.5</pre>	

Table 39 Frestore Command

Syntax	Description
<pre>frestore<cr></pre>	<p>Restores the factory default settings. All user-made settings are lost, including user calibration. Reset the transmitter after giving this command.</p> <hr/> <p>If you have replaced the HUMICAP® humidity sensor of the device yourself, you must redo the two-point humidity calibration using the <code>FCRH</code> command after performing a factory reset.</p> <hr/>
<p>Example:</p> <pre>frestore Factory settings restored reset HMD112 / 1.0.6</pre>	

Table 40 Reset Command

Syntax	Description
<pre>reset<cr></pre>	<p>Resets the device.</p>
<p>Example:</p> <pre>reset HMD112 / 1.0.6</pre>	

5

MAINTENANCE

Cleaning

The body of the transmitter can be cleaned by wiping with a moistened lint-free cloth. Do not use cleaning agents or solvents, or blow pressurized air into the transmitter housing or on the filter.



Do not attempt to clean contaminated HUMICAP® sensors or filters. Instead, replace them with new parts. Filters and sensors can be purchased from Vaisala. For order codes, see [Spare Parts and Accessories on page 64](#).

Calibration and Adjustment



Calibration means comparing the instrument to a known reference, either against a second instrument or a known reference environment. Correcting the reading of the instrument so that it measures accurately is referred to as **adjustment**.

Performing an accurate calibration and adjustment takes some time and preparation. Instead of doing it yourself, you can also have a Vaisala service center calibrate and adjust your transmitter. For contact information, see section [Product returns on page 1](#).

HMDW110 series transmitters are fully calibrated as shipped from factory. You can use the service port to calibrate and adjust the humidity and temperature measurement of the transmitter as needed. If you think the transmitter is not measuring correctly, check the following before starting any calibration and adjustment procedure:

- Always wait for measurement instruments to stabilize in the ambient temperature. Temperature differences are a major source of measurement error.
- Check that there are no heat or moisture sources near the transmitter.
- Check that the transmitter is not in direct sunlight or close to the discharge of the supply air ducts.
- Check that there is no moisture on the probe. If the sensor has become wet, you must allow it to dry before you can measure.

Adjustment Types

You can perform a one-point calibration and adjustment with Vaisala hand-held meters that utilize the MI70 measurement indicator (for example, HM70). See the following sections:

- [Calibration and Adjustment Using a Hand-Held Meter and a Reference Probe on the next page](#)
- [One-Point Humidity Calibration and Adjustment Using a Hand-Held Meter and HMK15 Humidity Calibrator on page 48](#)

Connecting to the service port using a computer and a terminal program allows you to perform calibration and adjustment tasks using serial commands. You can, for example, perform a two-point humidity calibration and adjustment, or clear the existing user adjustments (factory calibration will remain). See the following sections:

- [Calibration and Adjustment Commands on page 39](#)
- [Two-Point Temperature Calibration and Adjustment using a Computer on page 52](#)
- [Two-Point Humidity Calibration and Adjustment using a computer and a HMK15 Humidity Calibrator on page 49](#)



If you replace the HUMICAP® humidity sensor of the transmitter, you must perform the two-point humidity calibration afterward.

Adjustment Points

HMDW110 series transmitters have two adjustment points for both humidity measurement and temperature measurement:

- The first point (low point) affects offset across the entire measurement range. For humidity adjustment, the low point must be < 50 %RH.

- The second point (high point) affects measurement gain. For humidity adjustment, the high point must be $> 50\%$ RH.

Additionally, two-point humidity calibration requires that the difference between the two points is $\geq 30\%$ RH.

Temperature adjustment points must be in range $-40 \dots +60\text{ }^{\circ}\text{C}$ ($-40 \dots +140\text{ }^{\circ}\text{F}$) with more than $30\text{ }^{\circ}\text{C}$ ($86\text{ }^{\circ}\text{F}$) difference.

Calibration and Adjustment Using a Hand-Held Meter and a Reference Probe



- A fully charged Vaisala MI70 indicator (the measurement display that is included in the HM70 package)
 - A calibrated reference probe that is compatible with the MI70 indicator (for example, HMP75) and its MI70 connection cable, if not integrated with the probe
 - Connection cable for HM70 hand-held meter (219980SP)
 - Medium size cross-head screwdriver (Poqidriv).
-

1. Insert the reference probe in the same environment as the probe of the HMDW110 series transmitter. You can also perform this procedure in the ambient environment, as long as it is reasonably stable.
2. Connect the reference probe to port I of the MI70 indicator (the measurement display that is included in the HM70 package).
3. Prepare the HMDW110 series transmitter for a service port connection as instructed in section [Connecting to the Service Port on page 23](#).
4. Plug in the connection cable 219980SP to the service port of the HMDW110 series transmitter, and the other end to port II of the MI70 indicator.
5. Turn on the MI70 indicator.
6. Check and adjust the environment settings of the reference probe if prompted by the MI70.
7. Select **Functions > Adjustments (II)** from the menu of the MI70 and select **Start**. Make sure the symbol for port II is shown after the word "Adjustments", as your reference probe may also be adjustable using the MI70.
8. The adjustment mode starts. Select **OK**.

9. Select the parameter for adjustment. You can only adjust relative humidity (RH) or temperature (T). The rest of the parameters are calculated based on RH and T and can only be viewed.
10. Check and adjust the environment settings of the reference probe if prompted by the MI70.
11. The adjustment mode now shows the value of the selected parameter from both instruments, and a delta parameter (for example, **ΔRH**) that shows the difference between the two. Wait at least 15 minutes for the measurement to stabilize, and for the value of the delta parameter to stop changing. Stabilization may take a much longer time, depending on factors such as temperature differences and airflow around the sensors.
12. The difference between the reading should be no greater than the combined measurement uncertainty of the HMDW110 series transmitter and the reference probe. Depending on the result, proceed as follows:
 - If the HMDW110 series transmitter is within its accuracy specification, there is no need to proceed with the adjustment. Select **Back** and **Exit** to leave the adjustment mode.
 - If adjustment is required, continue with the next step.
13. Select **Adjust**, and then select **To same as RH (I)**.
14. The MI70 will ask **Do you really want to adjust?** Select **Yes**. MI70 shows the text **Adjustment done** and returns to the adjustment mode after a few seconds. Check the value of the delta parameter to verify that the adjustment has taken effect.
15. Select **Back** to return to the parameter selection screen.
16. Select a new parameter for adjustment and proceed as instructed above, or select **Exit** to leave the adjustment mode.
17. Turn off the MI70 indicator and disconnect the connection cable from the service port.
18. Reconnect the terminal blocks and close the cover.

One-Point Humidity Calibration and Adjustment Using a Hand-Held Meter and HMK15 Humidity Calibrator



-
- A fully charged Vaisala MI70 indicator (the measurement display that is included in the HM70 package)
 - Vaisala HMK15 Humidity Calibrator with the preferred salt solution prepared (for example, LiCl (11 %RH) or NaCl (75 %RH))
 - Connection cable for HM70 hand-held meter (219980SP)
 - Medium size cross-head screwdriver (Pozidriv)
-

1. Prepare the HMDW110 series transmitter for a service port connection as instructed in section [Connecting to the Service Port on page 23](#).
2. Plug in the connection cable 219980SP to the service port of the HMDW110 series transmitter, and the other end to port I of the MI70 indicator. If any other probes are connected to the MI70, disconnect them.
3. Remove the filter on the probe. This exposes the sensors to damage, so handle the transmitter carefully.
4. Unplug the Ø12 mm hole on the HMK15 salt jar and insert the probe.
5. Wait at least 15 minutes for humidity to stabilize. Stabilization may take a much longer time if there are temperature differences or the salt solution is freshly made.
6. Turn on the MI70 indicator.
7. Select **Functions > Adjustments** from the menu of the MI70 and select **Start**.
8. The adjustment mode starts. Select **OK**.
9. Select RH as the parameter to be adjusted.
10. The adjustment mode should now show a stable, unchanging RH value. The difference between the measured value and the reference humidity of the jar should be no greater than the combined measurement uncertainty of the HMDW110 series transmitter and the salt jar. Depending on the result, proceed as follows:
 - If the HMDW110 series transmitter is within its accuracy specification, there is no need to proceed with the adjustment. Select **Back** and **Exit** to leave the adjustment mode.
 - If adjustment is required, continue with the next step.
11. Select **Adjust**, and then select **1-point adjustment**.

12. Select **Ready**, and use the arrow buttons to enter the correct RH value of the salt jar. Select **OK** when done.
13. The MI70 will ask **Do you really want to adjust?** Select **Yes**. MI70 shows the text **Adjustment done** and returns to the adjustment mode after a few seconds.
14. Select **Back** to return to the parameter selection screen, and **Exit** to leave the adjustment mode.
15. Remove the probe from the salt jar and reconnect the filter. Plug the hole on the salt jar.
16. Turn off the MI70 indicator and disconnect the connection cable from the service port.
17. Reconnect the terminal blocks and close the cover.

Two-Point Humidity Calibration and Adjustment using a computer and a HMK15 Humidity Calibrator



- Computer with
 - Windows operating system
 - Terminal application
 - Free USB port
 - Driver for Vaisala USB cable installed
- Vaisala USB cable for computer connection (219690)
- Vaisala HMK15 Humidity Calibrator with LiCl (11 %RH) and NaCl (75 %RH) salt solutions prepared.

Other solutions may be used, but the difference between the two points must be ≥ 30 %RH. Additionally, one solution must be < 50 %RH, and the other must be > 50 %RH.

- Medium size cross-head screwdriver (Pozidriv)



If you have changed the HUMICAP® humidity sensor of the transmitter, perform the procedure below so that you use the `FCRH` command instead of the `CRH` command.

1. Prepare the HMDW110 series transmitter for a service port connection as instructed in section [Connecting to the Service Port on page 23](#).

2. Plug in the connection cable 219690 to the service port of the HMDW110 series transmitter, and the other end to a free USB port on your computer.
3. Remove the filter on the probe. This exposes the sensors to damage, so handle the transmitter carefully.
4. Unplug the Ø12 mm hole on the LiCl (11 %RH) salt jar and insert the probe.
5. Wait at least 15 minutes for humidity to stabilize. Stabilization may take a much longer time if there are temperature differences or the salt solution is freshly made.
6. Start a terminal application on the computer and open a new terminal session to the transmitter. For more information, see [Terminal Application Settings on page 24](#).
7. Give the `errs` and `send` commands to check that there are no active errors, and that the measurement is working:

```
errs
```

```
0000h  
No errors
```

```
send
```

```
T= 23.1 'C RH= 11.5 %RH Td= -7.3 'C Tw= 9.9 'C h= 28.5  
kJ/kg
```

8. Give the `l` command to view the currently active user adjustment parameters.

Example: default values of the user adjustment parameters (no user adjustment done).

```
Cp offset : 0.00000000E+00  
Cp gain   : 1.00000000E+00  
T offset  : 0.00000000E+00  
T gain    : 1.00000000E+00
```

9. Give the `crh` command to start the calibration and adjustment sequence. The transmitter shows the measured RH value and prompts you to enter the real humidity of the first reference point.

```
crh
```

```
RH : 11.5378 1. ref ?
```

10. Press enter to refresh the measured value (to see if the measurement is now stable). When it is, enter the value of the first reference point and press enter.

```
RH : 11.5378 1. ref ? <cr>
RH : 11.5379 1. ref ? <cr>
RH : 11.5379 1. ref ? 11.3
Press any key when ready ...
```



To exit the procedure without adjusting the measurement, press the escape key on your keyboard.

11. Transfer the probe to the NaCl (75 %RH) salt jar. Plug the hole on the LiCl (11 %RH) jar.
12. Wait for the humidity to stabilize. Press enter on the keyboard to refresh the measured value:

```
Press any key when ready ...
RH : 74.6984 2. ref ? <cr>
RH : 74.7173 2. ref ? <cr>
```

13. When the measurement is stable, enter the value of the second reference point and press enter.

```
RH : 74.9684 2. ref ? 75.4
OK
```

14. If the adjustment is successful, the transmitter responds with the text OK, and stores the adjustment.

If the reference points do not fulfill the requirements, or the measurement is too unstable for adjustment, the adjustment sequence will exit with an error message. In such a case, the adjustment is not be stored.

15. Give the `1` command to verify that the values of the adjustment parameters **Cp offset** and **Cp gain** have changed.

Example: user adjustment parameters after two-point humidity adjustment. Your values will be different.

```
Cp offset : -2.21914053E-03
Cp gain   : 1.00767076E+00
T offset  : 0.00000000E+00
T gain    : 1.00000000E+00
```

16. Remove the probe from the salt jar and reconnect the filter. Plug the hole on the salt jar.
17. Update the calibration date and calibration information on the transmitter using the `cdate` and `ctext` commands.

Example: set calibration date to 2014-08-04 and calibration info text to "Lab2/Mike".

```
cdate 20140804
Cal. date       : 20140804
ctext Lab2/Mike
Cal. info      : Lab2/Mike
```

18. Disconnect the connection cable from the service port.
19. Reconnect the terminal blocks and close the cover.

Two-Point Temperature Calibration and Adjustment using a Computer



- Computer with
 - Windows operating system
 - Terminal application
 - Free USB port
 - Driver for Vaisala USB cable installed
 - Vaisala USB cable for computer connection (219690)
 - Two temperature references in range -40 ... +60 °C (-40 ... +140 °F) with more than 30 °C (86 °F) difference
 - Medium size cross-head screwdriver (Pozidriv)
-

1. Prepare the HMDW110 series transmitter for a service port connection as instructed in section [Connecting to the Service Port on page 23](#).
2. Plug in the connection cable 219690 to the service port of the HMDW110 series transmitter, and the other end to a free USB port on your computer.
3. Insert the probe in the first temperature reference.
4. Wait at least 15 minutes for temperature to stabilize.
5. Start a terminal application on the computer and open a new terminal session to the transmitter. For more information, see [Terminal Application Settings on page 24](#).

6. Give the `errs` and `send` commands to check that there are no active errors, and that the measurement is working:

```
errs
0000h
No errors
```

```
send
T= 23.1 'C RH= 11.5 %RH Td= -7.3 'C Tw= 9.9 'C h= 28.5
kJ/kg
```

7. Give the `l` command to view the currently active user adjustment parameters.

Example: default values of the user adjustment parameters (no user adjustment done).

```
Cp offset : 0.00000000E+00
Cp gain   : 1.00000000E+00
T offset  : 0.00000000E+00
T gain    : 1.00000000E+00
```

8. Give the `ct` command to start the calibration and adjustment sequence. The transmitter shows the measured T value and prompts you to enter the real temperature of the first reference point.

```
ct
T : 22.9424 1. ref ?
```

9. Press enter to refresh the measured value (to see if the measurement is now stable). When it is, enter the value of the first reference point (in degrees Celcius) and press enter.

```
T : 22.9424 1. ref ? <cr>
T : 22.9424 1. ref ? 23.0
Press any key when ready ...
```



To exit the procedure without adjusting the measurement, press the escape key on your keyboard.

10. Transfer the probe to the second temperature reference.

11. Wait for the temperature to stabilize. Press enter on the keyboard to refresh the measured value:

```
Press any key when ready ...
T   : 54.9871 2. ref ? <cr>
T   : 54.9873 2. ref ? <cr>
```

12. When the measurement is stable, enter the value of the second reference point and press enter.

```
T   : 54.9873 2. ref ? 55
OK
```

13. Give the 1 command to verify that new values for user adjustment parameters **T offset** and **T gain** have been stored.

Example: user adjustment parameters after two-point temperature adjustment. Your values will be different.

```
Cp offset : 0.00000000E+00
Cp gain   : 1.00000000E+00
T offset  : 7.64255524E-02
T gain    : 1.00767076E+00
```

14. Remove the probe from the temperature reference.
15. Update the calibration date and calibration information on the transmitter using the `cdate` and `ctext` commands.

Example: set calibration date to 2014-08-04 and calibration info text to "Lab2/Mike".

```
cdate 20140804
Cal. date       : 20140804
ctext Lab2/Mike
Cal. info       : Lab2/Mike
```

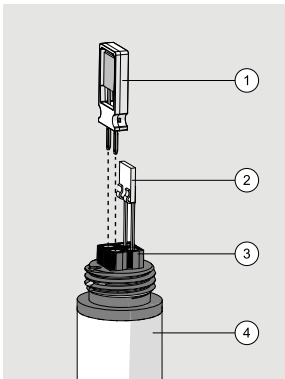
16. Disconnect the connection cable from the service port.
17. Reconnect the terminal blocks and close the cover.

Replacing the HUMICAP® Sensor on HMD110/112 and HMW110/112



- New HUMICAP® humidity sensor (HUMICAP180R or HUMICAP180V).
- New filter (always recommended when replacing the sensor).
- Duct models only: medium size crosshead screwdriver (Pozidriv).

1. Power down the transmitter.
2. Duct models only: loosen the tightening screw on the fastening flange, and pull the probe out of the duct.
3. Remove the filter to access the sensors.



- 1 = Vaisala HUMICAP® sensor. Handle by the plastic frame.
 2 = Temperature sensor. Do not touch or attempt to remove.
 3 = Sensor socket.
 4 = Transmitter probe.

4. Pull out the old HUMICAP® sensor, and insert the new one.
5. Perform a two-point humidity calibration on the serial line using the `FCRH` command. See section [Two-Point Humidity Calibration and Adjustment using a computer and a HMK15 Humidity Calibrator on page 49](#).
6. Insert the new filter.
7. Duct models only: push the probe back into the duct, to the same depth where it was before. Tighten the tightening screw on the fastening flange.
8. Power up the transmitter.

Replacing the HUMICAP® Sensor on HMS110/112



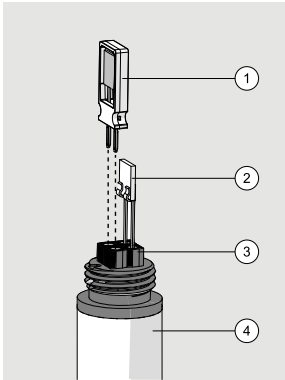
- New HUMICAP® humidity sensor (HUMICAP180R or HUMICAP180V).
 - New filter (always recommended when replacing the sensor).
 - Medium size crosshead screwdriver (Pozidriv).
 - Flat-head screwdriver
 - 3 mm hex key (Allen key) for opening the radiation shield screws.
-



You will need to remove the radiation shield to access the sensor, and this is difficult to do while the transmitter remains mounted on a pole or wall. The procedure below takes advantage of the detachable screw terminal to allow the cable to remain in place during the operation.

1. Power down the transmitter.
2. Open the transmitter cover and unplug the screw terminal. This allows you to leave the cable and cover at the installation site.
3. Remove the transmitter from its installation point.
4. Open the two long screws that hold the radiation shield, and pull them out.
5. Use a flat head screwdriver to push on the visible plastic tab below the radiation shield.
6. Tilt the radiation shield away from the opened tab. This opens the second tab on the other side, allowing you to remove the radiation shield.

7. Remove the filter to access the sensors.



- 1 = Vaisala HUMICAP® sensor. Handle by the plastic frame.
2 = Temperature sensor. Do not touch or attempt to remove.
3 = Sensor socket.
4 = Transmitter probe.

8. Pull out the old HUMICAP® sensor, and insert the new one.
9. Perform a two-point humidity calibration on the serial line using the `FCRH` command. See section [Two-Point Humidity Calibration and Adjustment using a computer and a HMK15 Humidity Calibrator on page 49](#).
10. Insert the new filter.
11. Reassemble, remount, and reconnect the transmitter.
12. Power up the transmitter.

Filter Selection

When replacing the filter, note that there are two alternative filter options depending on the probe model:

- HMS and HMD products use the membrane filter (Vaisala order code ASM210856SP).
- HMW products use the porous PTFE filter (Vaisala order code DRW239993SP).

6

TROUBLESHOOTING

Problem Situations

Table 41 Possible Problem Situations and their Remedies

Problem	Possible Cause	Remedy
Analog output reading is unchanging and appears incorrect.	Analog output is in error state.	Remove the cause of the error state and the analog output will recover its normal function.
Probe outputs stars "*****" on serial line instead of measurement data.	Humidity sensor is wet.	Wait for the humidity sensor to dry, or remove the filter and gently dry the sensors and the filter with clean instrument air.
	Sensor damage.	Remove the filter and visually check the sensors for damage. Contact a Vaisala Service Center if repair is needed. Note that you can also replace the humidity sensor yourself; refer to instructions in section Maintenance on page 44 .
	Unsuitable operating environment.	Verify that the operating environment is within specified operating limits.
Cannot connect to transmitter using service port.	You are not using the right connection cable.	Check that you are using the cables specified in section Connecting to the Service Port on page 23 .
	Transmitter is connected to RDP100 remote display panel.	Unplug the screw terminals as instructed in section Connecting to the Service Port on page 23 .
	Unknown serial line settings.	Verify the transmitter's serial line settings as instructed in section Unknown serial settings on page 60 .

Problem	Possible Cause	Remedy
Transmitter is not responding to serial commands.	Transmitter is in poll mode.	<p>Open a connection to the transmitter with the <code>open</code> command. See Open Command on page 33.</p> <p>If you do not know the transmitter's address, give the <code>??</code> command to make the transmitter output its status information, including the address.</p>

Error Messages

To show the currently active error messages of the transmitter, use the `errs` serial command. See [page 28](#).

Table 42 Error Messages

Error Message	Possible Cause	Remedy
T meas error	Temperature sensor is short circuited, damaged, or missing.	Check that the legs of the temperature sensor are not short circuited. Contact a Vaisala Service Center if the temperature sensor is damaged.
F meas error	Humidity sensor is wet.	Wait for the humidity sensor to dry, or remove the filter and gently dry the sensors and the filter with clean instrument air.
RH sensor failure	Humidity sensor is damaged or missing.	Replace the humidity sensor or contact a Vaisala Service Center.
Ambient temperature error	Ambient temperature is too high.	Lower the temperature at the installation site.
Program flash check sum error	Internal transmitter error.	If the error remains after a reset and restoring the factory settings, contact a Vaisala Service Center.
Parameter flash check sum error		
INFOA check sum error		
SCOEF5 check sum error		
CURRENT check sum error		
Unknown error		

Unknown serial settings



-
- Computer with
 - Windows operating system
 - Terminal application
 - Free USB port
 - Driver for Vaisala USB cable installed
 - Vaisala USB cable for computer connection (219690)
-

If you are not sure what the current serial settings of your transmitter are, follow the steps below to find out:

1. Prepare the HMDW110 series transmitter for a service port connection as instructed in section [Connecting to the Service Port on page 23](#).
2. Plug in the connection cable 219690 to a free USB port on your computer, but do not connect the other end to the transmitter yet.
3. Start a terminal application on the computer and open a new terminal session with the default serial settings of **19200 N 8 1**. For more information, see [Terminal Application Settings on page 24](#).
4. Plug the other end of the connection cable 219690 to the service port of the transmitter, and immediately send the hash character # to the serial line.
5. The normal startup of the transmitter is now interrupted, and the transmitter is available for commands with the default serial settings. Give the ? command to check the transmitter's information. The transmitter's currently stored serial settings are visible on the line marked **Baud P D S**.

Technical Support

For technical questions, contact the Vaisala technical support by e-mail at helpdesk@vaisala.com. Provide at least the following supporting information:

- Name and model of the product in question
- Serial number of the product
- Name and location of the installation site
- Name and contact information of a technically competent person who can provide further information on the problem.

For contact information of Vaisala Service Centers, see www.vaisala.com/servicecenters.

7

TECHNICAL DATA

Specifications

Table 43 Performance

Property	Specification
Relative humidity	
Measurement range	0 ... 100 %RH
Accuracy	
Temperature range +10 ... +30 °C (+50 ... +86 °F)	
0 ... 90 %RH	±2 %RH
90 ... 100 %RH	±3 %RH
Temperature range -20 ... +10 °C, +30 ... +60 °C (-4 ... +50 °F, +86 ... +140 °F)	
0 ... 90 %RH	±3 %RH
90 ... 100 %RH	±4 %RH
Temperature range -40 ... -20 °C (-40 ... -4 °F)	
0 ... 100%RH	±4 %RH
Stability in typical HVAC applications	±0.5 %RH/year
Humidity sensor	HUMICAP® 180R / HUMICAP® 180V
Temperature	
Measurement range	-40 ... +60 °C (-40 ... +140 °F)
Accuracy at +20 °C (+68 °F)	±0.2 °C
Temperature dependence	±0.01 °C/°C
Temperature sensor	Pt1000 RTD Class F0.1 IEC 60751
Calculated parameters	
Measurement range for dewpoint temperature and wet bulb temperature	-40 ... +60 °C (-40 ... +140 °F)
Measurement range for enthalpy	-40 ... 460 kJ/kg (-10 ... +190 BTU/lb)
Accuracy of the calculated parameters should be calculated at the actual condition based on the RH and temperature specification.	
Accuracy at 20°C (68°F) and 80 %RH	

Property	Specification
Dew point	±0.7 °C (1.2 °F)
Wet bulb temperature	±0.5 °C (0.9 °F)
Enthalpy	±1.6kJ/kg (0.7 BTU/lb)

Table 44 Operating Environment (All Models)

Property	Specification
Operating temperature range	-40 ... +60 °C (-40 ... +140 °F)
Operating humidity range	0 ... 100 %RH
Maximum wind/flow speed	30 m/s
Storage temperature	-40 ... +60 °C (-40 ... +140 °F)
Electromagnetic compliance	EN61326-1, Industrial Environment

Table 45 Mechanics

Property	Specification
Max wire size	1.5 mm ² (AWG 16)
Standard housing color	White (RAL9003)
Housing material	PC + 10%GF (UL-V0 approved)

Table 46 Inputs and Outputs

Property	Specification
Analog output	4 ... 20 mA, loop powered
Loop resistance	0 ... 600 Ω
Supply voltage at 0 Ω load at 600 Ω load	10 ... 28 VDC 20 ... 28 VDC
Data input for RDP100 Remote Panel Display	RS485, Vaisala proprietary protocol

Dimensions



All dimensions are in millimeters (mm).

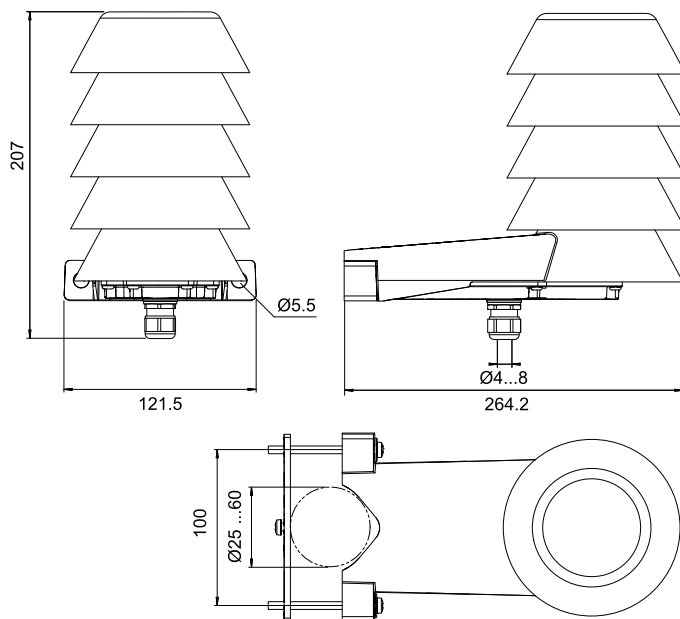


Figure 13 HMS110/112 Dimensions

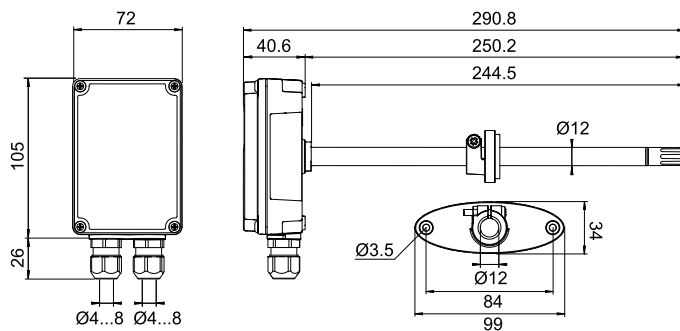


Figure 14 HMD110/112 Dimensions

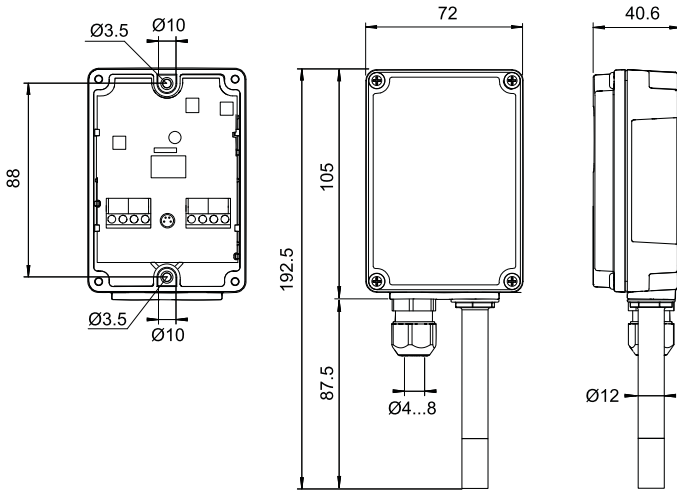


Figure 15 HMW110/112 Dimensions

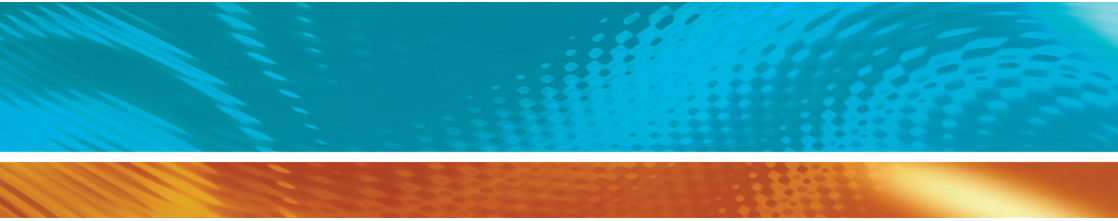
Spare Parts and Accessories



Information on spare parts, accessories, and calibration products is available online at www.vaisala.com and store.vaisala.com.

Table 47 Spare Parts and Accessories

Item	Order Code
Remote Panel Display	RDP100
Conduit fitting + O-ring (M16x1.5 / NPT 1/2 Inch)	210675SP
Conduit fitting + O-ring (M16x1.5 / PG9, RE-MS)	210674SP
Fastening set HMS110	237805
Porous PTFE Filter (HMW probes)	DRW239993SP
Membrane Filter (HMS and HMD probes)	ASM210856SP
Terminal Block, Blue	236620SP
USB cable for computer connection	219690
Connection cable for HM70 hand-held meter	219980SP
HUMICAP® 180R sensor	HUMICAP180R
Catalytic HUMICAP® sensor	HUMICAP180V



www.vaisala.com

