

MS100 (Pin) and MS150 (Pin/Pinless) Moisture Meters

**Measure moisture content in wood (5 to 50%)
and other building materials (1.5 to 33%)**

Features:

- Pinless measurement (Model MS150) for non-invasive testing (6 to 99.9%)
- Audible indicator increases as the moisture level gets higher
- Low, Medium, High moisture level icons
- Lock button freezes measurement on screen for hard to see areas
- Built-in calibration check
- Low battery warning
- Complete with protective cap, replacement pins and 9V battery
- 1 year warranty

Applications:

- Home Inspection
- Water Damage Restoration
- Lumber Yards
- Painting
- Paper Mills
- Textile and Clothing Manufacturing

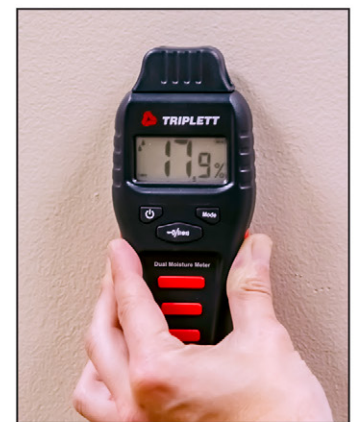


Ordering Information:

MS100	Pin Moisture Meter
MS150	Dual Pin/Pinless Moisture Meter



Moisture Meter (pin)



Moisture Meter (pin/pinless)

MS100 (Pin) and MS150 (Pin/Pinless) Moisture Meters

**Measure moisture content in wood (5 to 50%)
and other building materials (1.5 to 33%)**

Specifications

	MS100	MS150
Pin Measurement Range	Wood: 5.0 to 50.0% Building Material: 1.5 to 33.0%	Wood: 5.0 to 50.0% Building Material: 1.5 to 33.0%
Pinless Measurement Range	—	Wood/Building Material: 0.1 to 99.9% (relative measurement)
Resolution	6.0%	6.0%
Visual Alert	Low, Medium, High Icons	Low, Medium, High Icons
Icon Levels for Wood	Low: 5.0 to 11.9% Medium: 12.0 to 15.9% High: 16.0 to 50.0%	Low: 5.0 to 11.9% Medium: 12.0 to 15.9% High: 16.0 to 50.0%
Icon Levels for Building Materials	Low: 1.5 to 16.9% Medium: 17.0 to 19.9% High: 20.0 to 33.0%	Low: 1.5 to 16.9% Medium: 17.0 to 19.9% High: 20.0 to 33.0%
Audible Alert	Beeper increases in speed as moisture level goes up	Beeper increases in speed as moisture level goes up
Power	9V Battery	9V Battery
Dimensions	6.63 x 2.63 x 1.25"	6.63 x 2.63 x 1.25"
Weight	4.4 oz (without battery)	4.4 oz (without battery)