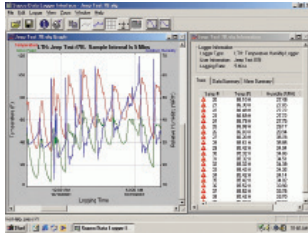




THE RIGHT CHOICE



Features / Benefits

- Stores over 10,000 measurement points
- 1 second to 18 hour sample rate; 1 second increments
- Custom user identification (30 characters)
- Real Time data monitoring
- Over/Under Alarm threshold settings
- Visual alarm indication
- User selectable Recording Start (Specify date & time, immediate after setup or on door close)
- Tamper proof
- 20 month battery life (at 1 minute sample rate)
- Data rollover option
- One PC Software operates with all loggers (LLSU or LLS not included)
- Graphic or text data
- Zoom capability
- 1 year warranty

For Temperature and Temperature/Humidity Sensitive Applications:

- Refrigerators/Freezers • Commercial Refrigeration Systems • Medical Storage Facilities • Laboratories
- Greenhouses • Florists • Museums



LT2 Temperature Logger (Internal & External)

- One Internal and One External Thermistor Temperature Measurement, simultaneously



LTT Dual Temperature Logger

- 2 Independent External Temperature Measurements & Temperature Differential
- 2 DLTP6 Sensors (Included)
- 6' Leads



LTC Thermocouple Temperature Logger

- One Internal and One External (J, K, E, T, R, S Thermocouples) Temperature Measurement
- External sensor Type K Thermocouple (included)
- Also compatible with Type J, E, T, R, S Thermocouples



LTH Temperature and Humidity Logger

- Integral Temperature, Humidity and Dew Point Measurements



LPT and LPT1000 Pressure and Temperature Logger

- External Pressure and Temperature Measurements
- For Pressure and Temperature Sensitive Applications:**
- Compressor Run Cycles
 - Testing New Installations
 - Pneumatic air lines
 - Tracking Intermittent Problems
 - Superheat Measurements
 - S/S Sensor



LCV Current and Voltage Logger

- External Current Probe and Voltage Measurements
- For Simultaneous Single Phase Current and Voltage Monitoring:**
- Compressor and Fan Run Cycles
 - Verification of Power Conditions
 - AC only
 - Use three LCV's for Three Phase Applications



L420 4 – 20 ma Logger

- Connection for 4 – 20 ma loop measurements
- For Monitoring 4 – 20 ma Process control loops in:**
- Manufacturing
 - Package Handling
 - Automated Test Systems

LT2, LTH, LTC & LTT

Data Logger Specifications

	LT2	LTH	LTC	LTT
Sample Point Capacity	21,500 points (Single channel) 10,750 points and differential (Dual channel)	21,500 for temperature only 10,750 points for Temperature, Humidity and Dew Point	10,750 points for external and internal temperature	21,500 temperature points (1 probe) 10,750 temperature points and differential (2 probes)
Sampling Rate	1 second to 18 hours	1 second to 18 hours	1 second to 18 hours	1 second to 18 hours
Alarms	Over and under alarms for each probe.	Over and under alarms for temperature & humidity.	Over and under alarms for each probe	Over and under alarms for each probe.
Temperature Range (Internal Sensor)	32°F to 140°F (0°C to 60°C) w/ Alkaline Battery -40°F to 150°F (-40°C to 65°C) w/ Lithium Battery	32°F to 140°F (0°C to 60°C) w/ Alkaline Battery -40°F to 150°F (-40°C to 65°C) w/ Lithium Battery	32°F to 140°F (0°C to 60°C) w/ Alkaline Battery -40°F to 150°F (-40°C to 65°C) w/ Lithium Battery	
Temperature Range (External Sensor)	-40°F to 150°F (-40°C to 65°C)		Depends on thermocouple J,K,E,T,R,S K -40°F - 400°F included	-50°F to 300°F (-46°C to 150°C) 2DLTP6
Accuracy	±1.0°F (0.5°C)	±2°F (1°C)	Depends on thermocouple	±2°F (1°C)
Resolution	0.1°F (0.05°C)	0.1°F (0.05°C)	0.1°F (0.05°C)	0.1°F (0.05°C)
Time Accuracy	±100ppm @75°F	±100ppm @75°F	±100ppm @75°F	±100ppm @75°F
Relative Humidity Range		0% to 99.9% RH, Non-condensing.		0% to 95% RH, non-condensing
Relative Humidity Accuracy		±2% full scale, from 0% to 95% RH for temperatures between 32°F and 140°F (0°C to 60°C)		
Relative Humidity Resolution		0.1% RH		
Temperature using Alkaline Battery	32°F to 140°F (0°C to 60°C)	32°F to 140°F (0°C to 60°C)	32°F to 140°F (0°C to 60°C)	32°F to 140°F (0°C to 60°C)
Temperature using Lithium Battery	-40°F to 150°F (-40°C to 65°C)	-40°F to 150°F (-40°C to 65°C)	-40°F to 150°F (-40°C to 65°C)	-40°F to 150°F (-40°C to 65°C)
Operating Range Humidity	0% to 95% RH, Non-condensing	0% to 99.9% RH, Non-condensing		
Storage Temperature	-40°F to 170°F (-40°C to 77°C)	-40°F to 170°F (-40°C to 77°C)	-40°F to 170°F (-40°C to 77°C)	-40°F to 170°F (-40°C to 77°C)
Calibration	Single point offset calibration available through software.	Single point offset calibration available through software. Humidity is factory calibrated.	Single point offset calibration available through software.	Single point offset calibration available through software.
Dimensions	3" x 2.5" x 1.1" (7.6cm x 6.4cm x 2.8cm)	3" x 2.5" x 1.1" (7.6cm x 6.4cm x 2.8cm)	3" x 2.5" x 1.1" (7.6cm x 6.4cm x 2.8cm)	3" x 2.5" x 1.1" (7.6cm x 6.4cm x 2.8cm)
Weight	2.5 oz (71g)	2.5 oz (71g)	2.5 oz (71g)	2.5 oz (71g)
Power Source	9V Alkaline or Lithium battery (not included)	9V Alkaline or Lithium battery (not included)	9V Alkaline or Lithium battery (not included)	9V Alkaline or Lithium battery (not included)
Battery Life (average use)	18 Months using Alkaline Battery 36 Months using Lithium Battery	20 Months using Alkaline Battery 40 Months using Lithium Battery	20 Months using Alkaline Battery 40 Months using Lithium Battery	20 Months using Alkaline Battery 40 Months using Lithium Battery

*Note: Logger needs optional **LLS** or **LLSU** Software package to program data logger and download data for analysis. It is not included with any LOGIT data logger.

LPT, LPT1000, LCV & L420

Data Logger Specifications

	LPT	LPT1000	LCV	L420
Sample Point Capacity	10,750 points for Pressure & Temperature 21,500 points for Pressure OR Temperature	10,750 points for Pressure & Temperature 21,500 points for Pressure OR Temperature	10,750 points for Current & Voltage 21,500 points for Current OR Voltage	21,500 points
Sampling Rate	1 second to 18 hours	1 second to 18 hours	1 second to 18 hours	1 second to 18 hours
Alarms	Over and under alarms for Pressure & Temperature	Over and under alarms for Pressure & Temperature	Over and under alarms for current and voltage	Over and under alarm
Temperature Range (External Sensor)	-40°F to 150°F (-40°C to 65°C)	-40°F to 150°F (-40°C to 65°C)		
Accuracy	±1°F (0.5°C)	±1°F (0.5°C)		
Resolution	0.1°F (0.05°C)	0.1°F (0.05°C)		
Time Accuracy	±100ppm @75°F	±100ppm @75°F	±100ppm @75°F	±100ppm @75°F
Pressure Range	0-500 psi	0-1000 psi		
Pressure Sensor	-4°F to 185°F	-4°F to 185°F		
Temperature Range	-20°C to 85°C	-20°C to 85°C		
Compensated	32°F to 130°F	32°F to 130°F		
Temperature Range	0°C to 55°C	0°C to 55°C		
Pressure Accuracy	±3 psi	±5 psi		
Pressure Resolution	0.15 psi	0.3 psi		
Pressure Connection	1/4" MPT Pressure Sensor Connection	1/4" MPT Pressure Sensor Connection		
Input Current Range			0-300 Amps	0-40 ma
Current Accuracy			±5%	±0.05 ma
Current Resolution			0.1 Amp AC	0.01 ma
Voltage Range			0-500 Volts AC only	
Voltage Accuracy			±1 VAC	
Voltage Resolution			0.1 VAC	
Temperature using Alkaline Battery	32°F to 130°F (0°C to 54°C)	32°F to 130°F (0°C to 54°C)	32°F to 130°F (0°C to 54°C)	32°F to 140°F (0°C to 60°C)
Temperature using Lithium Battery	-40°F to 150°F (-40°C to 65°C)	-40°F to 150°F (-40°C to 65°C)	-40°F to 150°F (-40°C to 65°C)	-40°F to 150°F (-40°C to 65°C)
Operating Range Humidity	Non-condensing	Non-condensing	0% to 95% RH, Non-condensing	0% to 95% RH, Non-condensing
Storage Temperature	-40°F to 170°F (-40°C to 77°C)	-40°F to 170°F (-40°C to 77°C)	-40°F to 170°F (-40°C to 77°C)	-40°F to 170°F (-40°C to 77°C)
Calibration	Single point offset calibration available through software. Pressure is factory calibrated.	Single point offset calibration available through software. Pressure is factory calibrated.	Single point offset calibration available through software. Current and Voltage are factory calibrated.	Single point offset calibration available through software.
Dimensions	3" x 2.5" x 1.1" (7.6cm x 6.4cm x 2.8cm)	3" x 2.5" x 1.1" (7.6cm x 6.4cm x 2.8cm)	3" x 2.5" x 1.1" (7.6cm x 6.4cm x 2.8cm)	3" x 2.5" x 1.1" (7.6cm x 6.4cm x 2.8cm)
Weight	2.5 oz (71g)	2.5 oz (71g)	2.5 oz (71g)	2.5 oz (71g)
Power Source	9V Alkaline or Lithium battery (not included)	9V Alkaline or Lithium battery (not included)	9V Alkaline or Lithium battery (not included)	9V Alkaline or Lithium battery (not included)



LLS LOGiT PC Software and Interface for Serial Connection

- PC Software on CD ROM
- LINT Interface
- Cable for LOGiTs to Serial Port (CABLE6)
- Maximum Serial Interface 50 feet.

LLSU LOGiT PC Software and Interface for USB Connection

- PC Software on CD ROM
- LINTU Interface
- Cable for LINT to USB Port (19449)



Benefits/Specifications

- Compatible with Windows 95 and above
- Graphic and Text Data
- 3 Memory modes: Stop on full, record continuously, or memory rollover
- Real time monitoring
- Password protected calibration of each channel
- Data exportable to Text or Excel
- Maximum Serial Interface 50 feet.
- Minimum System Requirements: 8MB RAM, 2MB Disk Space, 800 x 600 Resolution, COM port or USB port



LOGiT Accessories

Standard Accessories		LT2	LTH	LTC	LTT	LPT	LCV	L420
14265-001	15' Remote							
	Temperature Sensor	*				*		
DLTP6	4" Stainless Steel							
	6' Temperature Sensor				(2)			
TPFDA	K-type Thermocouple with							
	4' FDA Approved Insulation			*				
12867	300 A Current Probe†						*	
Optional Accessories		LT2	LTH	LTC	LTT	LPT	LCV	L420
USBS	USB to Serial Interface	*	*		*	*	*	*
LLS	LOGiT PC Software & Interface	*	*	*	*	*	*	*
LLSU	LOGiT PC Software & Interface	*	*	*	*	*	*	*
SW25	25' Temperature Sensor	*				*		
	Extension Wire							
SW50	50' Temperature Sensor	*				*		
	Extension Wire							
SW75	75' Temperature Sensor	*				*		
	Extension Wire							
SW100	100' Temperature Sensor	*				*		
	Extension Wire							
CABLE10T	10' Sensor Extension Wire					*		
CABLE10H	10' Sensor Extension Wire							
	(Max 3)				*			

†Pressure probe must be factory calibrated with LPT logger

*Current sensor must be factory calibrated with LCV logger