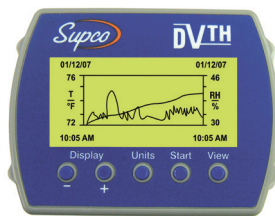
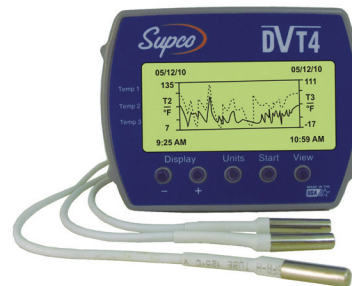


DATAVIEW DATA LOGGER SERIES

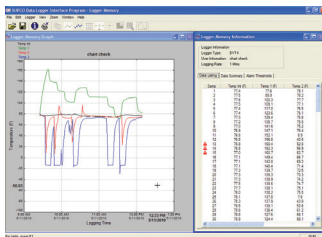
INSTANTLY record and view critical performance parameters with the Dataview data logger series. Three models to choose from: DVTH for Temperature, Humidity and Dew Point, DVT4 for one internal and three external Temperatures and DVCV for Current, Voltage and Watts. Monitor real time measurements for instant environment or electrical conditions; when you're ready, download to your PC for further analysis.



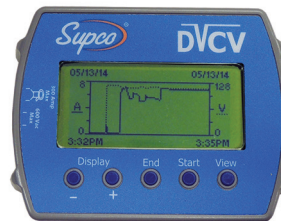
DVTH
Temperature, Humidity
and Dew Point



DVT4
One Internal and
3 External Temperatures



PC Software & USB cable
included with each
Data Logger



DVCV
True rms Current, Voltage and Watts



Features/Benefits

- Text display: Real time measurements, logging summary, sample rate, memory used and memory left.
- Graph Display: Shows measurement trends with scrolling feature
- Visual over and under alarm indicators
- USB connection (cable included)
- Compatible with Windows™ 98SE/ME, 2000, XP, Vista and Windows™ 7. Compatible with 32 and 64 bit systems. (software included)

Applications for DVTH & DVT4

- Refrigerators/ Freezers
- Commercial refrigeration systems
- Wine storage
- Greenhouses
- Florists
- Museums
- Laboratories

Applications for DVCV

- MRO
- Industrial processes
- Variable speed drives
- Intermittent electrical problems

Common Software Specifications

PC Interface	USB port. USB cable is included
Sampling Interval	User selectable from 1 second to 9 hours, in 1 second increments.
Data Security	Unique factory set logger ID. Recording session counter. Password protected calibration.
Operating System Compatibility	Windows® 2000, XP, Vista and 7. Compatible with 32 and 64 bit systems. Not compatible with Windows NT or Windows 95.
Minimum System Requirements	5MB of free disk space, 800 x 600 screen resolution, 1 free USB port.
Recording Start	On button press, immediate after setup, or at a user specified date and time.
Recording Mode	Stop on memory full, or continuous recording with memory rollover
Real Time Status	Visual indication through the status LED. Software real time status.
User Calibration	Password protected calibration for each channel; except DVCV.
User Information	Up to 30 characters
Logger Channels	User selectable. Disabling channels increases the storage capacity of the other channels.
Units	US and Metric
Data Format	Exportable to text or Excel files.

Common Logger Specifications

Sample Rate	User selectable 1 second to 9 hour
Alarms	Visual over and under alarm indicator for all 4 channels
Calibration	User single point offset calibration is available through software for all temperature channels. Calibration can be password protected
Operating Temperature	15°F to 150°F (-10°C to 65°C)
Storage Temperature	-5°F to 160°F (-20°C to 70°C)
Time Accuracy	+/-100ppm@75°F
Dimensions	4" x 3.05" x 1.5" (10.2cm x 7.7cm x 3.8cm)
Weight	7.0 oz (200g)
Power Source	Three AA batteries (included)
Battery Life	1 year continuous use, 2 years average use. The logger automatically turns itself OFF after 1 hour, when not logging. Turn ON by pressing any button

DVT4 Logger Specifications

Sample Storage	21,760 points for 4 temperatures, 29,013 points for
Capacity	3 temperatures, 43,520 points for 2 temperatures, 87,040 points for single temperature.
Internal Probe Temperature Range	15°F to 150°F (-10°C to 65°C)
External Probe Temperature Range	-40°F to 160°F (-40°C to 70°C)
Temperature Accuracy	+/-1°F (0.5°C)
Temperature Resolution	0.1°F or 0.1°C

DVTH Logger Specifications

Text Display	Displays real time temperature, humidity and dew point. Displays logging summary, sample rate, memory used and memory left.
Graph Display	Shows measurement trends graphically. Graph can be scrolled through the entire logged data.
Sample Point Capacity	43,344 points for temperature only. 21,672 points for temperature, humidity and dew point.
Relative Humidity Range	0% to 90% RH, non condensing.
Relative Humidity Accuracy	+/- 2%RH, from 10% to 90% RH
Relative Humidity Resolution	0.01%RH
Temperature Accuracy	+/-1°F (0.5°C)
Temperature Resolution	0.01°F or 0.01°C

DVCV Logger Specifications

Text Display	Displays real time current, voltage and watts. Displays logging summary, sample rate, memory used and memory left.
Sample Point Capacity	43,344 points for current or voltage only. 21,672 points for current and voltage
Measurement Type	True rms up to the 21st harmonic at 60Hz
Current Range	1 to 300 Amps AC
Current Accuracy	+/- 1.0 A
Current Resolution	0.2 A
Voltage Range	1 to 600 Volts AC
Voltage Accuracy	+/- 0.4 V
Voltage Resolution	0.2 V