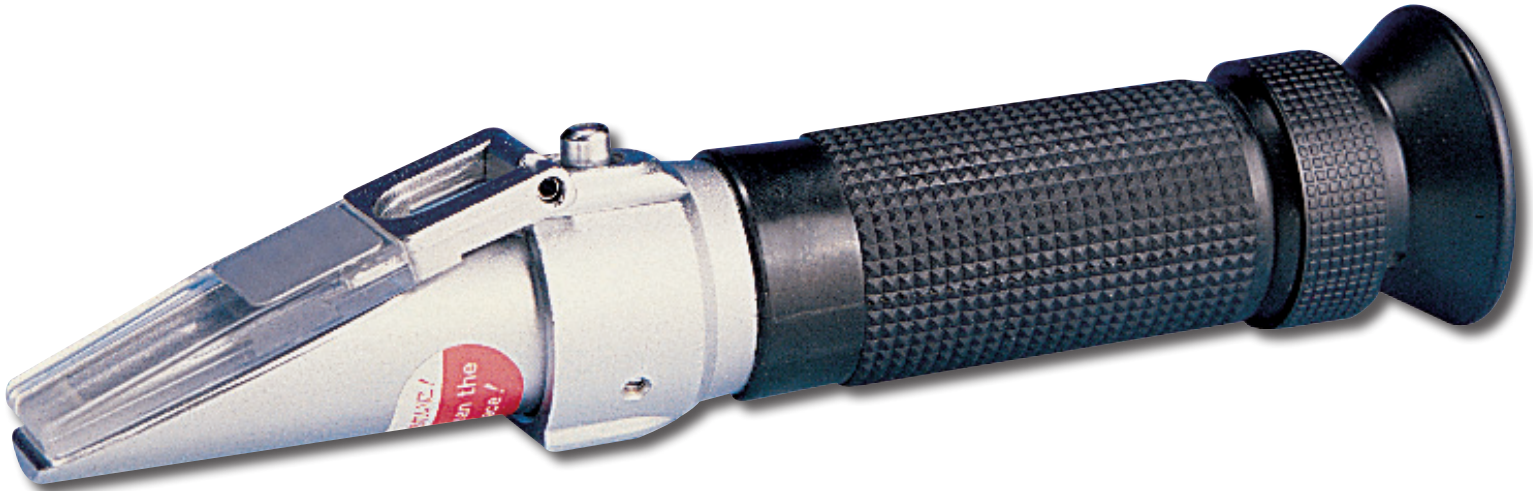


BRIX REFRACTOMETER

TECHNICAL DATA



FEATURES

- A BRIX Refractometer shows the concentration percentage of the soluble solids content (total solids) of a sample (water solution)
- The soluble solids content is the total of all the solids dissolved in the water - beginning with sugar, salts, protein, acids, etc. and the measurement reading value is the value of the sum total of those
- BRIX% is calibrated to the number of grams of cane sugar contained in 100g of cane sugar solution (When measuring a sugar solution, the BRIX% should perfectly match the actual concentration)

SPECIFICATIONS

MODEL	RANGE	RES'N	ACC'Y
R9500	0 to 32%	0.2%	±0.2%
MT-090	58 to 90%	0.2%	±0.2%

ORDERING INFORMATION

R9500	BRIX Refractometer
MT-090	BRIX Refractometer
RPDPA1	Lens Cover
CERTIRM1	NIST Calibration Certificate