

# Track-It™ Rugged Temperature Data Logger

## Description

The Track-It™ Rugged Temperature Data Logger is a submersible battery powered stand alone compact data logger that records up to 32,000 samples of temperature data. A wide temperature range and 316L stainless steel IP68 packaging make it versatile and rugged enough for the more strenuous temperature logging applications. Moisture, corrosion, and force are prevented from affecting your measurements, as well as submersion. The unit is easily configured using the included Track-It™ Software. Simply connect the logger to an open USB port on your PC and the software automatically identifies the logger. Use the internal push button to start and stop recording and check status or configure the unit to start recording immediately, start and/or



stop at a predetermined time and date, or only when an alarm condition is sensed. The sample storage rate can be set from 1 sample every 2 seconds up to 1 sample every 24 hours. The on board data storage is non-volatile so data will not be lost in the event of a depleted battery.

## Features

- Push button or program to start recording
- Up to 32,000 samples per record
- Alarm set points
- Compact 316L SS enclosure
- USB interface (cable included!)
- Interactive software (included!)
- Three year battery life (battery included!)
- N.I.S.T. calibration available
- Wide temperature range -40 to 257F/125C
- High accuracy and repeatability
- Accurate internal clock (1 minute/year)
- Projected time and date of full log
- Mean kinetic temperature calculation
- Two seconds to 24 hours sample rate

## Typical Uses

- FDA
- Storage
- Food
- Oil and Gas
- Buildings
- Laboratories
- HVAC
- Refrigeration
- Pharmaceutical
- Transportation/Cold Chain
- Freezers
- HACCP



# Track-It™ Rugged Temperature Data Logger



## Specifications

### General

<b>Record:</b>	<b>Sample Rates:</b> User configured 1 every 2 seconds up to 1 every 24 hours <b>No. of Samples:</b> 32,000
<b>Record Trigger:</b>	Two independent triggers. Multiple trigger modes: Instantaneous, button control, on alarm, time and date (start and stop), day of week
<b>Record Mode:</b>	Fill to end of memory, cyclic, number of samples, time duration
<b>LED:</b>	User programmable: Indication of alarms, recording, triggered
<b>Button:</b>	User programmable: Record on/off, reset alarms, view status
<b>Alarms:</b>	2 user programmable alarms. High or Low
<b>Communication:</b>	Direct USB connection via standard USB cable (included)
<b>Software:</b>	Track-It™ Software - Program device, view data (historic or real time), export to Excel™. MKT Calculation Included
<b>Battery:</b>	Battery: 1/2 AA High Temperature Model TLH-5902 or equal Life: 3 years @ 1 minute sample rate
<b>Dimensions</b>	3.585" (91.06mm)L x 0.787" (20mm)diameter

### Measurement

<b>Temperature Range:</b>	-40 to +125°C / -40 to 257°F
Accuracy:	± .2°C / .4°F
Resolution:	0.06°C / 0.06°F
<b>Clock Accuracy:</b>	± 1 minute/year



### Ordering Information

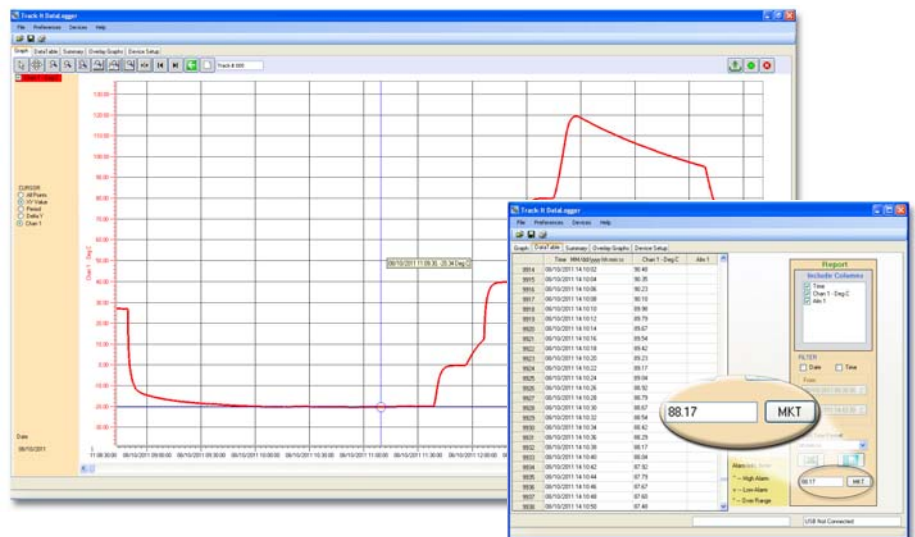
Item	Description	Part No.
Rugged Temp	Logger + battery	5396-0105
NIST Temp	Logger w/ NIST Cal Cert	5396-0105-CAL

## Track-It™ Software

Track-It™ Software is a powerful Windows based software package that is included with every Track-It™ Data Logger. It allows for easy setup, retrieval, interpretation and export of the recorded data. Simply connect your Track-It™ data logger to an open USB port and begin communicating immediately.

Point and click to select your sample interval, alarm set points, engineering units and recording triggers.

View a numerical data table or graphical representation of data readings relative to time. Use the graph cursor tools such as panel meter display, x-y value, period, or peak to peak. Zoom and stretch to examine and analyze the data and print a graphical report. From the data table view, see a summary containing min, max and average as well as Mean Kinetic Temperature. Export stored data to an Excel™ spreadsheet. Track-It™ Software also turns your PC into a real time data acquisition system by allowing you to stream graphical or tabular data directly to your PC.



Calculate MKT

## Track-It™ Transport App



Track-It™ Transport is a free Android Application that allows you to use your Android device to start and stop recording and transfer data using a USB On-the-Go cable. Available on Google Play.

Contact:  
Industrial Process Measurement, Inc.  
3910 Park Avenue, Unit 7  
Edison, NJ 08820  
732-632-6400  
support@instrumentation2000.com  
<http://www.instrumentation2000.com>