

Track-It™ AC Event Data Logger

Description

The Track-It™ AC Event Data Logger is a battery powered stand alone compact data logger that records up to 64,000 events. Use the Track-It™ Event Logger to monitor cycle patterns of pumps, blowers and other electrical equipment powered by 120 or 240VAC. The unit is easily configured using the included Track-It™ Software. Simply plug the logger into an open USB port on your PC and the software automatically identifies the logger. Use our memory conservation feature to record only when the state changes, or set the sample storage rate to record from 1 sample every 2 seconds up to 1 sample every 24 hours. Start and stop recording at a predetermined time and date or only when an alarm condition is sensed. The on board data storage is non-volatile so data will not be lost in the event of a depleted battery.



The Track-It™ AC Event Logger can also be used to record ambient temperature along with on/off cycles. This can help diagnose heat vs. cycle time issues. Information displayed on the LCD is also user programmable and can be sequenced by pressing the logger button. The multicolor LED indicator notifies the user of temperature alarms or general activity.

Features

- Use button or PC to start your record
- Up to 64,000 samples
- Monitor cycle frequency and duration
- Record AC ON/OFF cycles
- 120/240 VAC 50/60 Hz
- Alarm set points
- Small compact size
- Integral USB interface (no custom cable!)
- Interactive software (included!)
- One year battery life (battery included!)
- Optional three year battery life
- High accuracy and repeatability
- Accurate internal clock (1 minute/year)
- Multiple user programmable displays
- Ambient Temperature Sensor included

Typical Uses

- AC Motor efficiency studies
- Predictive maintenance
- Monitor lead/lag pump cycles
- AC machinery run times

Track-It™ AC Event Data Logger



Specifications

General

Record:	Sample Rates: State changes only or 1 every 2 seconds up to 1 every 24 hours No. of Samples: 64,000
Record Trigger:	Two independent triggers. Multiple trigger modes: Instantaneous, button control, on alarm, time and date (start and stop), day of week or on event only.
Record Mode:	Fill to end of memory; cyclic, number of samples, time duration
Display:	4 digit LCD User programmable: Indication of data value, eng units, alarms, record mode, battery condition, time/date, memory
LED:	User programmable: Indication of alarms, recording, triggered
Button:	User programmable: View display, record on/off, reset alarms, reset timer
Alarms:	2 user programmable alarms. High or Low
Communication:	Direct USB connection
Software:	Track-It™ Software - Program device, view data, export to Excel™. Simple and advanced modes.
Battery:	Coin Cell Option: Battery: Lithium CR2032 Life: 1 year @ 1 minute sample rate Hi Energy Option: Battery: EF651625 Life: 3 years @ 1 minute sample rate
Dimensions:	4.06" (10.32cm)L x 0.66" (1.67cm)H x 1.00" (2.54cm)W

Measurement

Voltage Range:	120 to 240 Vac parallel (voltage triggered, optically isolated)
Temperature Range:	-20 to +85°C / -4 to 185°F w/EF65162 battery -20 to +70°C / -4 to 158°F w/CR2032 battery
Accuracy:	±0.5°C 0 to 50°C / 32 to 122°F ±2°C -20 to 85°C / -4 to 185 F
Resolution:	0.06°C / 0.11°F
Clock Accuracy:	± 1 minute/year

Ordering Information

Model Number	Description	Part No.
AC Event Track-It	Logger w/display, std. battery	5396-0711
AC Event Track-It LB	Logger w/display, long life battery	5396-0712
AC Event Input Mod.	Input Module only (no logger)	5396-0703



Track-It™ Transport App

Track-It™ Transport is a free Android Application that allows you to use your Android device to start and stop recording and transfer data using a USB On-the-Go cable. Available on Google Play:

<https://play.google.com/store/apps/details?id=com.trackit.transporter>

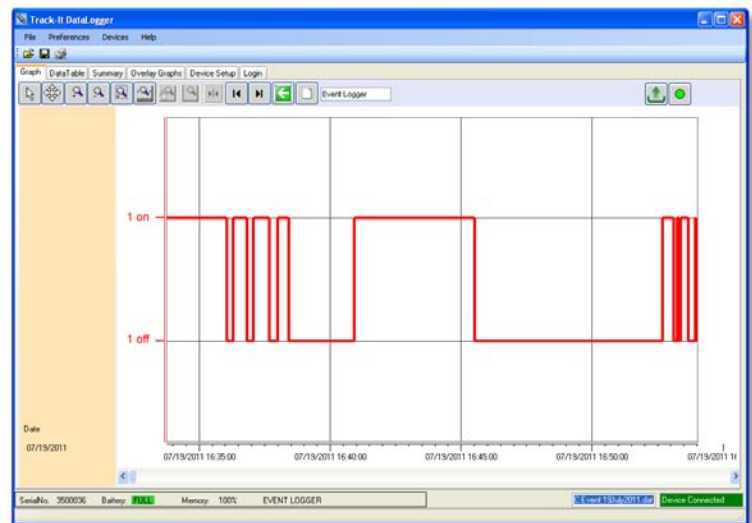
Track-It™ Software

Track-It™ Software is a powerful Windows based software package that is included with every Track-It™ data logger. It allows for easy setup, retrieval, interpretation and export of the recorded data. Simply connect your Track-It™ data logger to an open USB port and begin communicating immediately.

Point and click to select your sample interval, alarm set points, engineering units, recording triggers and LCD displays or just place the recorder into service using our industry experience driven default settings.

View a numerical data table or graphical representation of on/off state changes relative to time. Include temperature in the log and graph if desired. Use the graph tools such as zoom, cursor, min and max to examine and analyze the record. Use the export function to create an Excel spreadsheet from the recorded data. Use the software filters to generate custom reports.

Choose from a variety of display indications such as Hi/Lo, Run/Stop, On/Off, Yes/No, Go/Halt, or In/Out. Track-It™



Software automatically calculates total time on, time off, and total test time. Valuable information about run time and power cycling is easily interpreted.

Contact:
Industrial Process Measurement, Inc.
3910 Park Avenue, Unit 7
Edison, NJ 08820
732-632-6400
support@instrumentation2000.com
<http://www.instrumentation2000.com>