

BetaLOG™

BetaLOG is the high performance answer for pressure data logging applications. Whether you need to log data on one BetaGauge PI-PRO or 100, this easy to use, low cost application handles your entire requirement. And, BetaLOG also works with the ultra-accurate, BetaGauge PIR-PRO Reference Class gauge.

BetaLOG configures the gauge to operate in demand ad-hoc mode (field configuration or download mode (computer configuration) for complete flexibility in configuring your data logging application.



Using the download operational mode allows a wide range of configuration settings, including:

- Multiple interval selection options from 1 second to 1 hour.
- Data logging runs can range from only a few seconds to several weeks
- Log ambient temperature along with pressure for leak testing applications.
- Four types of data capture mode allows you to log either all data or only the points you're interested in.
 - Continuous (log all data at predefined intervals)
 - Data high (log data only when it rises above a preset value)
 - Data low (log data only when it falls below a preset value)
 - Delta trip (for detecting noise or transients in the pressure signal)
- Number of data points to record (up to the maximum of 9520 points)
- Type of data
 - Interval end
 - Average
 - Minimum
 - Maximum
 - Median
 - Average/Minimum/Maximum

But, it's not only the BetaLOG software that's smart. The BetaGauge PI-PRO is smart, too. With its high speed 10 readings per second measurement ability, you'll get the kind of accuracy you need for your application. It's ideal for applications like hydrostatic testing of pressure vessels and monitoring of well head pressures.

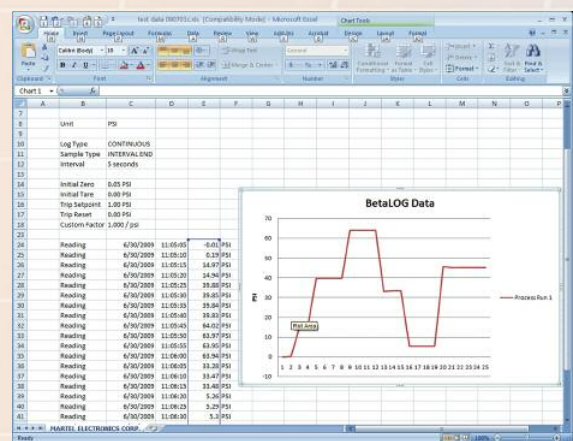
When set to Demand mode data logging, you can easily set up and initiate data logging in the field using the BetaGauge PI-PRO keypad with a few easy key presses. Did we mention in the field? That's where BetaGauge PI-PRO shines with its rugged stainless steel rubber booting housing, durable Lexan® faceplate, IP 65 rating and extremely long battery life. It is also CSA and ATEX rated for use in hazardous areas.¹



The BetaGauge PI-PRO supports multiple data sets and they can be mixed between Demand mode and Download mode, no problem!

Once the data is logged in the gauge non-volatile memory, a quick serial connection allows BetaLOG to retrieve the data and store it on your computer in a variety of formats:

- Plain ASCII text (.TXT)
- Comma delimited text (.CSV)
- Microsoft™ Excel™ Spreadsheet (requires Excel 2002 or later on the host PC).
- Microsoft Excel Spreadsheet with template formatting (sample templates come with the BetaLOG application and you can create your own to meet your specific requirements).

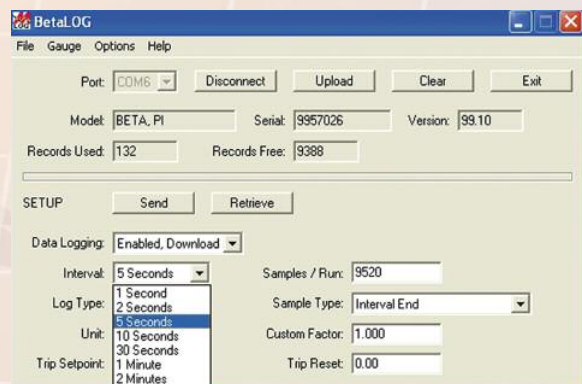


The data you get is reliable, accurate, easy to acquire and manage for a tremendous variety of applications.

- Hydrostatic pressure testing
- Leak detection
- Transient pressure spike detection
- Well head pressure monitoring
- And many others...

BetaLOG software is not only easy to use; it runs quickly on almost any modern Windows™ based PC. The basic requirements are:

- Pentium CPU, 1.0 GHz
- 512 MB RAM
- 5 MB disk storage plus additional storage for logged data
- Windows XP Professional, Vista Business or Ultimate, Windows 7
- Optional Microsoft Excel spreadsheet software (for data analysis in spreadsheet format)
- BetaGauge PI or PIR with firmware revision 3.00 or higher



BetaLOG Ordering Information	
Part Number	Description
1919826	BetaLOG-PI software on CD, USB communications cable, User Manual
0200039	Replacement Media (CD)
1919849	BetaLOG-PI KIT with software as above and BetaGauge PI-PRO (specify range)
1919850	BetaLOG-PI KIT with software as above and BetaGauge PIR-PRO (specify range)

Contact:
Industrial Process Measurement, Inc.
3910 Park Avenue, Unit 7
Edison, NJ 08820
732-632-6400
support@instrumentation2000.com
http://www.instrumentation2000.com