

TEST GAUGE

- Adjustable Micrometer Knife-Edge Pointer with Mirror Dial
- Stainless Steel Movement
- Dial Size: 4½"
- Ranges to 10,000 psi

The Marsh Test Gauge is designed with a black painted steel housing and the choice of copper alloy or 316 stainless steel tube and socket to meet the demanding service needs of various test gauge applications. Accuracy is ±0.5% of full span. A highly polished integral mirror is positioned between the two graduation arcs on the dial face. The knife-edge pointer is reflective so that, when the pointer and its reflection are in alignment, parallax is virtually eliminated and a true dial reading is assured.

Typical applications include test stands, aviation ground support, petroleum, chemical, utilities, industrial vessels and panel builders.

STANDARD RANGES & PART NUMBERS

TYPE	TEST GAUGES							
	4½"				4½"			
Size	Copper Alloy				Stainless Steel			
Internals	Steel	Steel	Steel	Steel	Steel	Steel	Steel	Steel
Case Material	LM	LM	LBM	LM	LM	LBM	LBM	LBM
Mounting	P	P	F	P	P	F	F	F
Case Style	¼ NPT	½ NPT	¾ NPT	¼ NPT	½ NPT	¾ NPT	¼ NPT	½ NPT
Connection	psi				psi			
Scale Standard	D0205	D0605	D1205	D5205	D5605	D6105	D6405	D6405
0 to 30" Hg VAC	D0210	D0610	D1210	D5210	D5610	D6110	D6410	D6410
30" Hg VAC to 15 psi	D0212	D0612	D1212	D5212	D5612	D6112	D6412	D6412
30" Hg VAC to 30 psi	D0214	D0614	D1214	D5214	D5614	D6114	D6414	D6414
30" Hg VAC to 60 psi	D0240	D0640	D1240	D5240	D5640	D6140	D6440	D6440
0 to 15 psi	D0242	D0642	D1242	D5242	D5642	D6142	D6442	D6442
0 to 30 psi	D0246	D0646	D1246	D5246	D5646	D6146	D6446	D6446
0 to 60 psi	D0248	D0648	D1248	D5248	D5648	D6148	D6448	D6448
0 to 100 psi	D0252	D0652	D1252	D5252	D5652	D6152	D6452	D6452
0 to 160 psi	D0254	D0654	D1254	D5254	D5654	D6154	D6454	D6454
0 to 200 psi	D0258	D0658	D1258	D5258	D5658	D6158	D6458	D6458
0 to 300 psi	D0260	D0660	D1260	D5260	D5660	D6160	D6460	D6460
0 to 400 psi	D0264	D0664	D1264	D5264	D5664	D6164	D6464	D6464
0 to 600 psi				D5272	D5672	D6172	D6472	D6472
0 to 1,000 psi				D5274	D5674	D6174	D6474	D6474
0 to 1,500 psi				D5276	D5676	D6176	D6476	D6476
0 to 2,000 psi				D5278	D5678	D6178	D6478	D6478
0 to 3,000 psi				D5282	D5682	D6182	D6482	D6482
0 to 5,000 psi				D5290	D5690	D6190	D6490	D6490
0 to 10,000 psi								

SPECIFICATIONS

ACCURACY

ASME Grade 2A - ±0.5% of range across full scale

CASE SIZE

4½" diameter

CASE MATERIAL

Steel, Black Painted

CASE STYLE

F - Front Flanged with U-clamp and hinged ring (LBM)

P - Plain Case Lower Mount (LM)

TUBE & SOCKET

Copper alloy or 316 Stainless Steel

MOVEMENT

Stainless Steel

CONNECTION

¼ or ½ NPT

RANGES

0 to 30" Hg VAC; Compound 30" Hg to 60 psi; 15 to 10,000 psi

DIAL STANDARD

single scale psi

DIAL COLOR

Black markings on white with mirror dial to avoid parallax

POINTER

Aluminum, black painted, micro-adjustable, knife-edge

WINDOW

Instrument Glass

PRESSURE RELIEF

Blowout plug

WEIGHT

3.0 lb.



TEST GAUGE OPTIONS

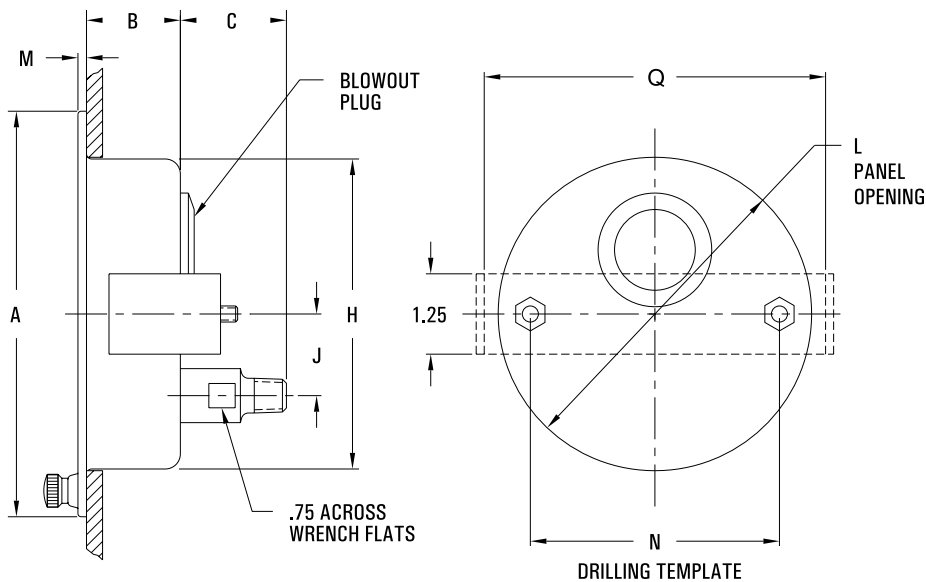
OPTION	TYPE	SUFFIX	AVAILABLE ON MODELS
Restrictors	Add restrictor	H	All ranges
Catalog Dials	bar only	L1	See Marsh Price List for minimum
	kg/cm ² only	L2	
	kPa only	L3	
	MPa only	L4	
	psi & bar	W1	
	psi & kg/cm ²	W2	
	psi & kPa	W3	
Custom Dials	Logo or Custom Face	M	All models - consult factory
	Window		
Window	Acrylic (AY)	F2	4½"
	Safety Glass (SG)	F3	4½"
Cases	4½" Polypropylene (TR)	J1	Consult Factory
	4½" Aluminum Back Flange	J2	
	4½" Aluminum Front Flange	J3	



Dial Divisions	Test Gauge 0.50% of Span		
Ranges	Figure Intervals	Minor Gradua- tions	
Vacuum	2	0.1	
COMPOUND			
30" Hg VAC to 15 psi	5	3	0.2 0.1
30" Hg VAC to 30 psi	10	5	0.5 0.1
30" Hg VAC to 60 psi	10	5	1 0.2
30" Hg VAC to 150 psi	30	10	2 0.5
30" Hg VAC to 300 psi	30	30	5 1
PRESSURE			
0 to 15 psi	1	0.05	
0 to 30 psi	2	0.1	
0 to 60 psi	5	0.2	
0 to 100 psi	10	0.5	
0 to 160 psi	10	0.5	
0 to 200 psi	20	1	
0 to 300 psi	50	1	
0 to 400 psi	50	2	
0 to 600 psi	50	2	
HIGH PRESSURE			
0 to 1,000 psi	100	5	
0 to 1,500 psi	100	5	
0 to 2,000 psi	200	10	
0 to 3,000 psi	500	10	
0 to 4,000 psi	500	20	
0 to 5,000 psi	500	20	
0 to 10,000 psi	1,000	50	

CASE PATTERNS & DIMENSIONS

ALL DIMENSIONS ARE NOMINAL



Size	A	B	C	H	J	L	M	N	Q
4½"	6.31	1.39	2.31	4.81	1.27	4.88	.11	3.88	5.31

MASTER TEST GAUGE [SERIES 'D']

- Knife-Edge Pointer with Mirror Dial
- External Dial Adjustment
- Dial Size: 6"
- Ranges to 10,000 psi

Marsh Master Test Gauges are used in precision laboratory applications and industrial environments where precise accuracy is demanded. For pressure readings to 10,000 psi, Marsh Master Test Gauges offer dependable, consistent accuracy within $\pm 0.25\%$ of span, meeting all requirements of ASME Grade 3A specifications. The pressure relieving blowout plug provides the increased safety required for potentially dangerous applications.

Typical applications include lab's, universities, automotive testing, government test facilities and pharmaceutical.



SPECIFICATIONS

ACCURACY

ASME Grade 3A - $\pm 0.25\%$ of range across full scale

CASE SIZE

6" (160mm) diameter

CASE MATERIAL

304 Stainless Steel

CASE STYLE

LM-Lower Mount

TUBE & SOCKET

Copper alloy

MOVEMENT

Stainless Steel

CONNECTION

$\frac{1}{4}$ " NPT through 600 psi

$\frac{1}{2}$ " NPT 1000 psi & above

RANGES

0 to 30" Hg VAC; Compound 30" Hg to 60 psi; 15 to 10,000 psi

DIAL STANDARD

Single scale psi

DIAL COLOR

Black markings on white with mirror dial to avoid parallax

POINTER

Aluminum, black painted, knife-edge

WINDOW

Instrument Glass

PRESSURE RELIEF

Blowout plug

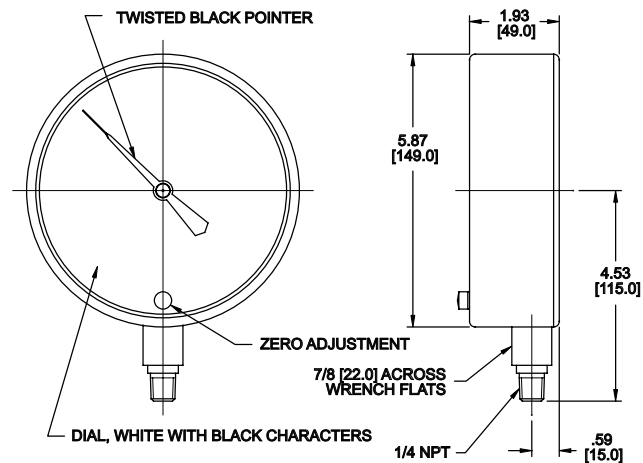
WEIGHT

5.0 lb.

STANDARD RANGES & PART NUMBERS

TYPE	MASTER TEST GAUGES	
Size	6" (160mm)	
Case Material	Stainless Steel	
Internals	Copper Alloy	
Mounting / Case Style	LM	LM
Connection	$\frac{1}{4}$ NPT	$\frac{1}{2}$ NPT
Scale Standard	psi	psi
0 to 30" Hg VAC	D31405	
30" Hg VAC to 15 psi	D31410	
30" Hg VAC to 30 psi	D31412	
30" Hg VAC to 60 psi	D31414	
0 to 15 psi	D31440	
0 to 30 psi	D31442	
0 to 60 psi	D31446	
0 to 100 psi	D31448	
0 to 160 psi	D31452	
0 to 200 psi	D31454	
0 to 300 psi	D31458	
0 to 400 psi	D31460	
0 to 600 psi	D31464	
0 to 1,000 psi		D31472
0 to 1,500 psi		D31474
0 to 2,000 psi		D31476
0 to 3,000 psi		D31478
0 to 5,000 psi		D31482
0 to 10,000 psi		D31490

ALL DIMENSIONS ARE NOMINAL



MASTER TEST GAUGE OPTIONS

OPTION	TYPE	SUFFIX	AVAILABLE ON MODELS
Catalog Dials	bar only	L1	Consult Factory
	kg/cm ² only	L2	
	kPa only	L3	
	MPa only	L4	
	psi & bar	W1	
	psi & kg/cm ²	W2	
	psi & kPa	W3	
psi & MPa	W4		
Custom Dials	Logo or Custom Face	M	
Window	Acrylic (AY)	F2	
	Safety Glass (SG)	F3	



INSPECTOR'S TEST GAUGE

- 3" Dial
- Vacuum to 1,000 psi Range
- Recalibrator on Dial Face
- ASME Grade 2A Accuracy

Marsh Inspector's Test Gauges are specifically designed for use by steam boiler, air brake and pressure system inspectors. The rugged 3" Inspector's Test Gauge features a nickel-plated case and an accuracy of $\pm 0.5\%$ of span. The bushed Mastergauge movement with Recalibrator is standard for these gauges. Mating parts are of dissimilar metals to prevent seizing. Bearing sleeves are of bronze, and the sector is brass.

Typical applications include steam boiler, air brakes, pressure system inspectors, and for use on other testing applications.

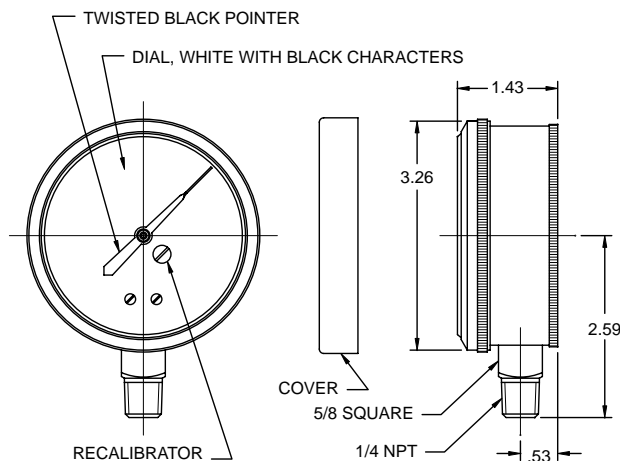
STANDARD RANGES & PART NUMBERS

TYPE	INSPECTOR'S TEST GAUGES
Size	3"
Case Material	Nickel Plated Brass
Internals	Copper Alloy
Mounting / Case Style	LM
Connection	1/4 NPT
Scale Standard	psi/kPa
0 to 30" Hg VAC	D1505
0 to 15 psi	D1540
0 to 30 psi	D1542
0 to 60 psi	D1546
0 to 100 psi	D1548
0 to 160 psi	D1552
0 to 200 psi	D1554
0 to 300 psi	D1558
0 to 600 psi	D1564
0 to 1,000 psi	D1572



SPECIFICATIONS

ACCURACY	ASME Grade 2A - $\pm 0.5\%$ of span across full scale
CASE SIZES	3" diameter
CASE MATERIAL	Brass, Nickel Plated
CASE STYLE	Lower Mount with threaded ring
TUBE & SOCKET	Copper alloy
MOVEMENT	Brass
RECALIBRATOR	Standard
CONNECTION	1/4 NPT
RANGES	0 to 30" Hg VAC; 15 to 1,000 psi
DIAL STANDARD	Dual Scale psi/kPa
DIAL COLOR	Black markings on white
POINTER	Aluminum, black painted, knife-edge
WINDOW	Beveled glass
PROTECTIVE COVER	Opaque plastic lens cover
WEIGHT	2.0 lb.



ALL DIMENSIONS ARE NOMINAL

INSPECTOR'S TEST GAUGE OPTIONS			
OPTION	TYPE	SUFFIX	AVAILABLE ON MODELS
Restrictors	Add restrictor	H	All ranges
Catalog Dials	psi only	E	See Marsh Price List for minimum
	bar only	L1	
	kg/cm ² only	L2	
	kPa only	L3	
	MPa only	L4	
	psi & bar	W1	
	psi & kg/cm ²	W2	
psi & MPa	W4		
Custom Dials	Logo or Custom Face	M	All models - consult factory

Contact:
 Industrial Process Measurement, Inc.
 3910 Park Avenue, Unit 7
 Edison, NJ 08820
 732-632-6400
 support@instrumentation2000.com
<http://www.instrumentation2000.com>