

QUADTCTEMP2000V2

4-CHANNEL THERMOCOUPLE

DATA LOGGER

WITH LCD DISPLAY

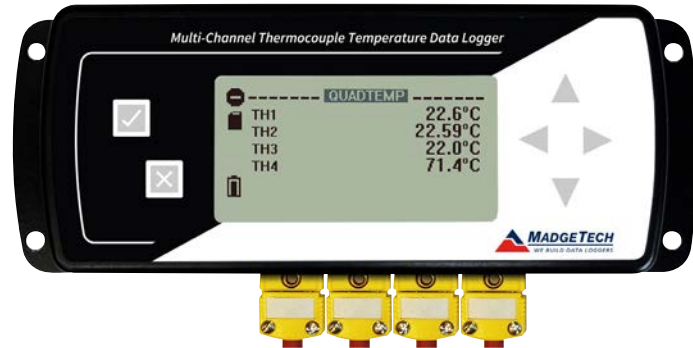


Features

- Large Backlit LCD Display
- User-Friendly Front Panel
- Accepts thermocouple types J, K, T, E, R, S, B, N
- High speed downloading
- On-screen statistics
- External power or user replaceable battery
- Low battery indicator

Applications

- Monitor multiple points
- Warehouse monitoring
- Refrigerator monitoring
- Medical and Pharmaceutical
- Oven monitoring
- Smoke houses
- Food Processing
- HVAC
- Engine Studies



*Thermocouple Plugs/Probes Sold Separately

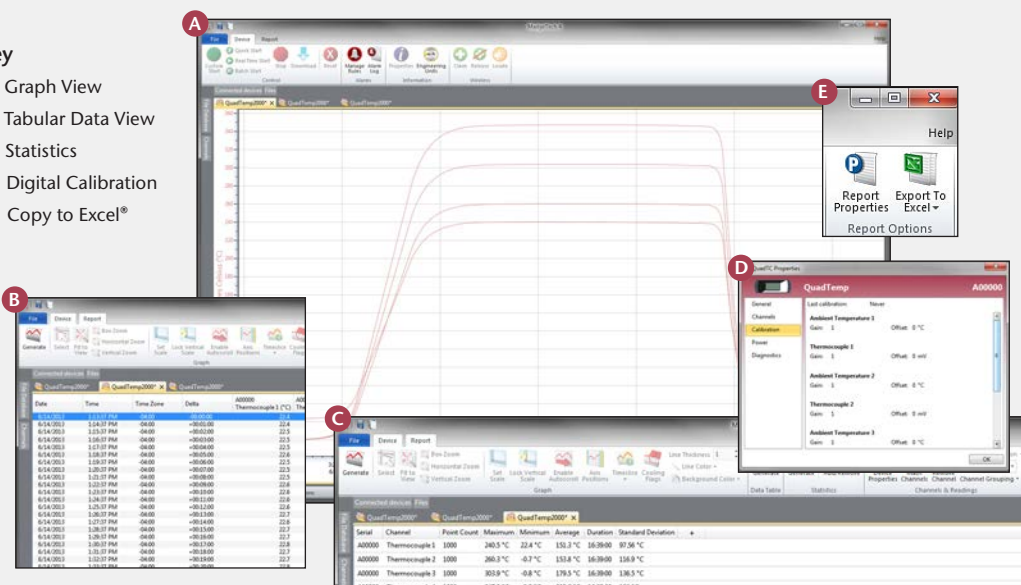
The QuadTCTemp2000V2 is a four channel thermocouple data logger with an LCD display. The device features on-screen minimum, maximum and average statistics, as well as a user configurable graphics screen that allows for any combination of channels to be displayed. The device accepts J, K, T, E, R, S, B and N type thermocouples.

The QuadTCTemp2000V2 is ideal for a variety of applications, whether it is remote temperature monitoring, or multiple points in a central location. Data from all channels is simultaneously logged and displayed on-screen for real-time monitoring. It can then be downloaded to a PC for further analysis.

MADGETECH DATA LOGGER SOFTWARE

Key

- A** Graph View
- B** Tabular Data View
- C** Statistics
- D** Digital Calibration
- E** Copy to Excel®



Software Features:

- Multiple graph overlay
- Statistics
- Digital calibration
- Zoom in/ zoom out
- Lethality equations (F0, PU)
- Mean Kinetic Temperature
- Full time zone support
- Data annotation
- Min./Max./Average lines
- Data table view
- Automatic report generation
- Summary view
- Multilingual

QUADTCTEMP2000V2 SPECIFICATIONS*

*Specifications are subject to change without notice. Specific warranty remedy limitations apply.

4 Internal Channels			
Temperature Range:	-20 °C to +60 °C (-4 °F to +140 °F)		
Temperature Resolution:	0.01 °C (0.018 °F)		
Calibrated Accuracy:	±0.5 °C (0 to +50 °C)		
4 Remote Channels			
Remote Channel Thermocouple Types:	J, K, T, E, R, S, B, N		
Thermocouple Connection:	Female subminiature (SMP)		
Cold Junction Compensation:	Automatic, based on internal channel		
Maximum Thermocouple Resistance:	1000Ω, <100Ω recommended		
Thermocouple	Range (°C)	Resolution	Accuracy**
J	-210 to +760	0.1 °C	±0.5 °C
K	-270 to +1370	0.1 °C	±0.5 °C
T	-270 to +400	0.1 °C	±0.5 °C
E	-270 to +980	0.1 °C	±0.5 °C
R	-50 to +1760	0.5 °C	±2.0 °C
S	-50 to +1760	0.5 °C	±2.0 °C
B	+50 to +1820	0.5 °C	±2.0 °C
N	-270 to +1300	0.1 °C	±0.5 °C

**Thermocouple accuracy is specified with a 24 AWG.

Start Modes:	Software programmable immediate start or delay start up to six months in advance
Real Time Recording:	May be used with PC to monitor and record data in real time
Memory: (all 8 Channels enabled)	261,888 Readings per channel
Reading Rate:	4 Hz up to 1 reading every 24 hours
Calibration:	Digital calibration through software
Calibration Date:	Automatically recorded within device
Battery Type:	9 Volt lithium or alkaline battery included, user replaceable
Battery Life:	18 months typical with display off. 3 months typical with continuous display use.
Data Format:	Date and time stamped °C, °F, K, °R, mV, V
Time Accuracy:	±1 minute/month
Computer Interface:	USB (Interface cable required); 115,200 baud
Software:	Windows XP SP3 or later MadgeTech 4 software, version 4.2.12.0 or later
Operating Environment:	-20 °C to +60 °C (-4 °F to +140 °F), 0 %RH to 95 %RH non-condensing
Dimensions:	7.24 in x 2.7 in x 1.14 in (183 mm x 68 mm x 29 mm)
Material:	Black anodized aluminum
Weight:	14.8 oz (420 g)
Approvals:	CE

BATTERY WARNING: DISCARD USED BATTERY PROMPTLY. KEEP OUT OF REACH OF CHILDREN. DO NOT DISPOSE OF IN FIRE, RECHARGE, PUT IN BACKWARDS, DISASSEMBLE, OR MIX WITH OTHER BATTERY TYPES. MAY EXPLODE, FLAME, OR LEAK AND CAUSE PERSONAL INJURY.

ORDERING INFORMATION

MODEL	PART NUMBER	DESCRIPTION
QUADTCTEMP2000V2	902089-00	4-Channel Thermocouple Data Logger with LCD Display
IFC200	900298-00	Software, manual and USB interface cable
U9VL-J	901804-00	Replacement battery for QuadTemp2000

ASK ABOUT OUR OTHER DATA LOGGERS

- Temperature
- Humidity
- Pressure
- pH
- Level
- Shock
- LCD Display
- Pulse/Event/State
- Current
- Voltage
- Wireless
- Intrinsically Safe
- Spectral Vibration
- Motion

Contact:
Industrial Process Measurement, Inc.
3910 Park Avenue, Unit 7
Edison, NJ 08820
732-632-6400
support@instrumentation2000.com
http://www.instrumentation2000.com