

# PRHTEMP2000

## PRESSURE, HUMIDITY & TEMPERATURE DATA LOGGER

### W/LCD DISPLAY



#### Features

- Large, backlit LCD display
- Front keypad w/lock feature
- User-selectable measurement units
- Simultaneous display of temperature, humidity & pressure
- Min./max. & average statistics
- Programmable start/stop time
- Convenient status indicators
- User replaceable battery and external power
- Wall mountable
- CE Approved

#### Applications

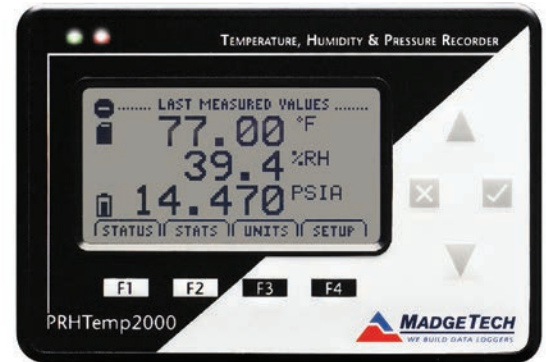
- Laboratory monitoring
- Warehouse monitoring
- Museum monitoring
- HVAC applications
- Medical and pharmaceutical facility monitoring
- Environmental studies
- HACCP program implementation
- Mineral Processing
  - Electrostatic Separation

The PRHTemp2000 is perfect for applications requiring instant remote readings of environmental parameters, including temperature, humidity and atmospheric pressure.

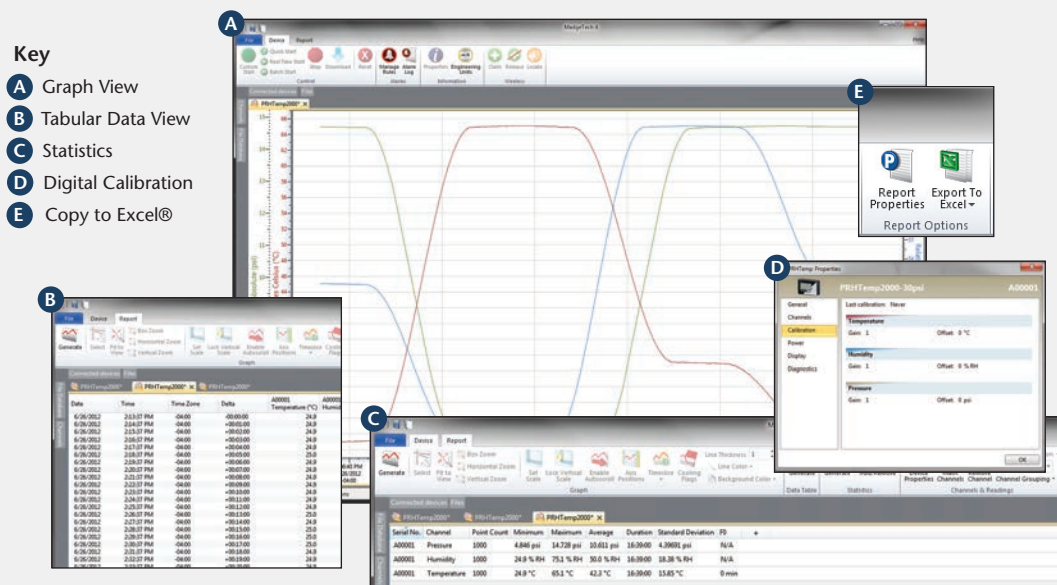
The 8-button keypad and large LCD provide convenient access to current data and recorder setup. Additionally, memory and battery levels, external power status, and sampling and recording status are shown on the LCD. Available on-screen data includes: statistics (*min, max, average*) for all three channels; recording status (*start, stop and recording rate*); display options (*channels shown, units, text size*); and calibration information (*date calibrated, date for recalibration*). Statistics can be cleared at any time during logging.

With 87,381 readings per channel, the PRHTemp2000 has one of the largest memory capacities of any similar data recorder on the market. The non-volatile memory will retain recorded data, even if AC and battery power are lost. The PRHTemp2000 typically runs up to one month on a user-replaceable 9 V battery. For power savings, both the LCD and backlight have configurable auto-off options. Those wanting to keep the LCD display and backlight continuously active need only to plug the unit to an AC power supply, keeping the 9 V battery connected as a back-up.

A calibration certificate is available for users needing to meet regulatory requirements. Creating permanent records, performing data calculations, and the graphing of data is quick and easy: Simply connect the interface cable to an available USB or serial port and, with a few clicks of the mouse, data is downloaded and ready for review or export to Excel®.



## MADGETECH DATA LOGGER SOFTWARE



#### Software Features:

- Multiple graph overlay
- Statistics
- Digital calibration
- Zoom in/ zoom out
- Lethality equations (F0, PU)
- Mean Kinetic Temperature
- Full time zone support
- Data annotation
- Min./Max./Average lines
- Data table view
- Automatic report generation
- Summary view
- Multilingual

# PRHTEMP2000 SPECIFICATIONS\*

\*SPECIFICATIONS ARE SUBJECT TO CHANGE WITHOUT NOTICE. SPECIFIC WARRANTY REMEDY LIMITATIONS

## TEMPERATURE

<b>Range:</b>	-20 °C to +60 °C
<b>Resolution:</b>	0.1 °C
<b>Calibrated Accuracy:</b>	±0.5 °C (0 °C to +50 °C)

## HUMIDITY

<b>Range:</b>	0 %RH to 95 %RH
<b>Resolution:</b>	0.1 %RH
<b>Calibrated Accuracy:</b>	±3 %RH (±2 %RH typical at 25 °C)
<b>Specified Accuracy Range:</b>	+10 °C to +40 °C, 10 %RH to 80 %RH

## PRESSURE

<b>Range:</b>	0 PSIA to 30 PSIA
<b>Resolution:</b>	0.002 PSIA
<b>Calibrated Accuracy:</b>	1 %FSR; 0.2 % at 25 °C

## DOT-MATRIX LCD

<b>Dimensions:</b>	2.5 in x 1.375 in (63 mm x 35 mm)
<b>Text:</b>	Configurable channel text size
<b>Indicators:</b>	Power, status, memory
<b>Backlight:</b>	Configurable w/auto shut-off and contrast adjustment

**BATTERY WARNING:** MAY LEAK AND/OR FLAME IF OPENED, RECHARGED, CONNECTED IMPROPERLY, OR DISPOSED OF IN FIRE.

<b>Start/Stop Time:</b>	Software programmable start time and date, up to six months in advance; programmable stop time
<b>Memory:</b>	87,381 readings per channel; 262,143 total readings; software configurable memory wrap
<b>Reading Rate:</b>	1 reading every 2 seconds up to 1 reading every 24 hours
<b>Calibration:</b>	Digital calibration through software
<b>Calibration Date:</b>	Automatically recorded within device
<b>Battery Type:</b>	9V lithium battery included, <b>user replaceable</b> ; optional AC adapter
<b>Battery Life:</b>	1 year battery life at 1 min reading rate with display off. 30 days typical with continuous LCD and no backlight usage.
<b>Unit Display:</b>	Date and time stamped °C, °F, K, °R; %RH, mg/ml water vapor concentration, dew point; PSIA, inHg, mmHg, bar, mbar, atm, Torr, Pa, hPa, kPa, MPa, inH2O, ftH2O, mH2O, ft alt, m alt
<b>Time Accuracy:</b>	±1 minute/month (at 20 °C to 30 °C)
<b>Computer Interface:</b>	PC serial or USB (interface cable required); 115,200 baud
<b>Software:</b>	XP SP3/Vista/Windows 7/Windows 8
<b>Operating Environment:</b>	-20 °C to +60 °C, 0 %RH to 95 %RH non-condensing
<b>Dimensions:</b>	4.8 in x 3.3 in x 1.25 in (122 mm x 84 mm x 32 mm)
<b>Weight:</b>	16 oz (440 g)
<b>Enclosure:</b>	Black anodized aluminum
<b>Approvals:</b>	CE Approved

## ORDERING INFORMATION

MODEL	DESCRIPTION
PRHTEMP2000	Pressure, Humidity and Temperature Recorder w/LCD Display
IFC200	Software, manual and USB interface cable
Calibration Certificate	Calibration Certificate available for data logger
U9VL-J	Replacement battery for PRHTemp2000

**ASK ABOUT OUR OTHER DATA LOGGERS**

- Temperature
- Humidity
- Pressure
- pH
- Level
- Shock
- LCD Display
- Pulse/Event/State
- Current
- Voltage
- Wireless
- Intrinsically Safe
- Spectral Vibration
- Motion