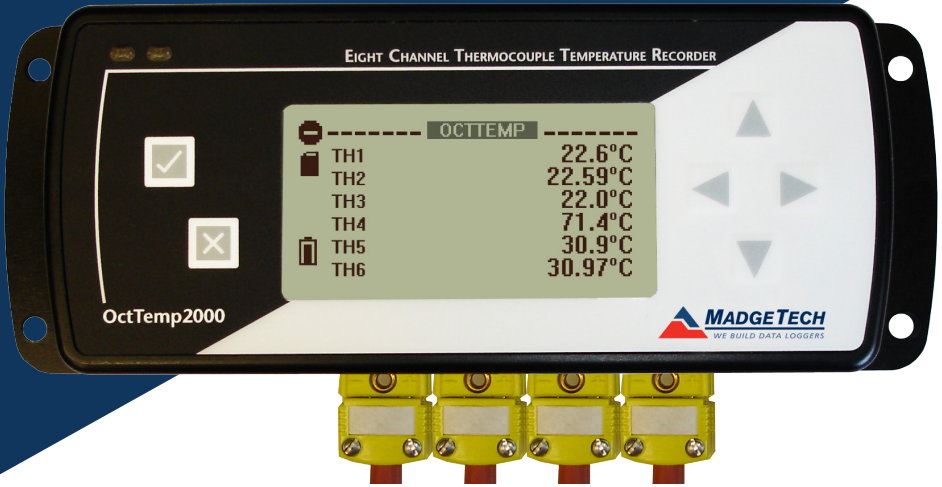


OctTemp2000



Data Logger Manual

Table of Contents

Overview	2
Other Documentation	2
Contacting Us	2
Introducing the OctTemp2000	3
Device Overview	3
Display Overview.....	4
Specifications	5
Device Functions	7
Channel Options	7
Show or Hide Channels on the Main Screen	7
Change Channel Display Size	8
Change Channel Units.....	9
Statistics	10
View Channel Statistics	10
Clear Channel Statistics	10
Time and Date Information	11
Push-button Start	11
Device Menus	12
Device Status Menu.....	12
Device Setup Menu	13
Software Features	15
Enable and Disable Channels.....	15
Name Channels.....	17
Change Device ID	18
Battery Information	19
Computer Interface	20
Warranty	21
Terms and Conditions	22

Overview

Other Documentation

Other documents which may be of interest to you are the Software Operating Manual and Data Logger Quick Start Guide. To obtain the most current versions of both of these documents please visit our website (www.madgetech.com).

Contacting Us

For additional sales, service, and support you may contact our office directly:

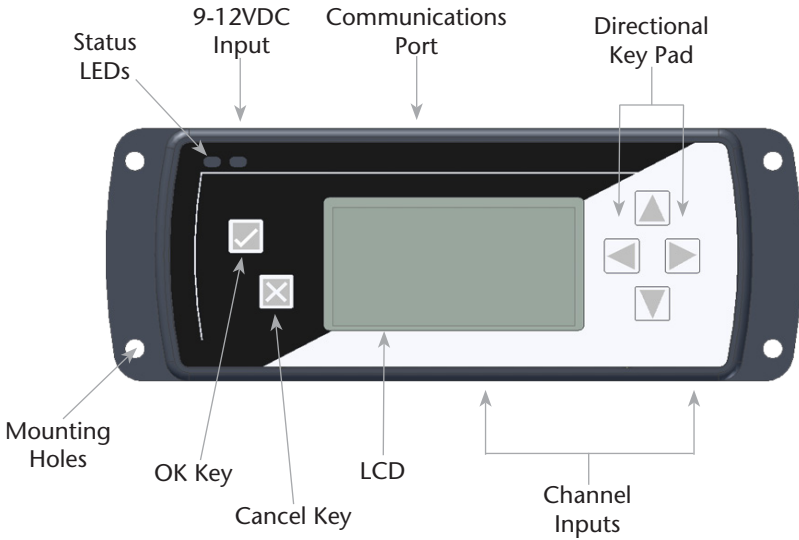
MadgeTech Inc.
6 Warner Road
Warner, NH 03278

Tel: (603) 456-2011
Fax: (603) 456-2012





info@madgetech.com

Introducing the OctTemp2000

Device Overview



Keypad Functions

	OK Key
	Cancel Key
	Up/Down Directional Keys
	Left/Right Directional Keys

Display Overview



Status Indicators

	Battery Power (Full, Half-full, Empty)
	Memory Remaining (Empty, Half-full, Full)
	Device is running
	Device is stopped
	Delay Start
	Push-button (Manual) Start
	Device reset has occurred
	External power present

Specifications

Internal Temperature Channels

Range: -20 to +60°C

Resolution: 0.1°C

Accuracy: $\pm 0.5^\circ\text{C}$ (0 to +50°C)

Thermocouple Channels

Types: J, K, T, E, R, S, B, and N

Connection: Female sub-miniature (SMP)

Cold Junction Compensation: Automatic, based on internal channel

Maximum Thermocouple Resistance: $1000\Omega < 100\Omega$ recommended

Thermocouples:

Type	Range	Resolution	Accuracy
J	-200 to +760°C	0.1°C	$\pm 0.5^\circ\text{C}$
K	-200 to +1370°C	0.1°C	$\pm 0.5^\circ\text{C}$
T	-200 to +400°C	0.1°C	$\pm 0.5^\circ\text{C}$
E	-200 to +980°C	0.1°C	$\pm 0.5^\circ\text{C}$
R	-50 to +1760°C	0.1°C	$\pm 2.0^\circ\text{C}$
S	-50 to +1760°C	0.1°C	$\pm 2.0^\circ\text{C}$
B	+50 to +1820°C	0.1°C	$\pm 2.0^\circ\text{C}$
N	-200 to +1300°C	0.1°C	$\pm 0.5^\circ\text{C}$

Dot-Matrix LCD

Dimensions: 2.5" x 1.375" (63mm x 35mm)

Text: Configurable channel text size

Indicators: Power, status, memory

Backlight: Configurable with auto shut-off and contrast adjustment

Start/ Stop Modes

Software programmable start time and date, up to six months in advance, or manual (push-button) start. Programmable stop time.

Memory

500,000 readings per channel with all channels enabled;

4,000,000 total readings; software configurable memory wrap

Reading Rate

4 readings per second (4Hz) up to 1 reading every 24 hours

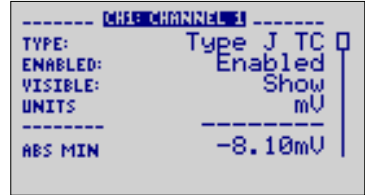
MadgeTech OctTemp2000

Calibration
Digital calibration through software. Calibration date automatically recorded within device. NIST traceable certificate available.
Power Supply
Primary Source: 9V lithium or alkaline battery, user replaceable Secondary Source: 7.5 - 24V DC external, 100mA max
Battery Life
Eighteen month battery life with display off. Three months typical with continuous display use.
Data Format
Time and date stamped, °C, °F, K, °R, µV, mV, V
Time Accuracy
±1 minute per month
Computer Interface
USB (interface cable required); 115,200 baud
Software
XP SP3/Vista/Windows 7
Operating Environment
-20 to +60°C, 0 to 95%RH non-condensing
Dimensions
7.24" x 2.7" x 1.14"
Weight
15oz.
Enclosure
Black anodized aluminum

Device Functions

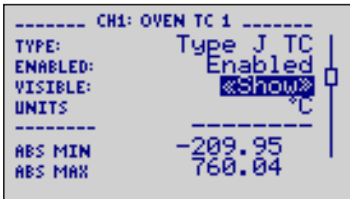
Channel Options

Each of the OctTemp2000's channels have several options that are configurable by the user through the device's display screen menus and the software.



Show or Hide Channels on the Home Screen

The user may choose to either show or hide channels on the home screen.



To change channel visibility from the **Home Screen**:

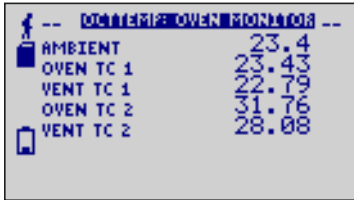
1. Press to view first **channel screen**
2. Use to view additional channels
3. On desired channel screen use to highlight **Visible**
4. Use to choose **Show** or **Hide**
5. Press to return to the **Home Screen**

—OR—

1. Use to highlight desired channel
2. Press to view **channel screen**
3. Use to highlight **Visible**
4. Use to choose **Show** or **Hide**
5. Press to return to the **Home Screen**

Change Channel Display Size

Channels may be viewed in a number of different sizes. The smallest size allows for an overview of several channels at once, while the largest gives at-a-glance access to one or two channels.



Small Font



Medium Font



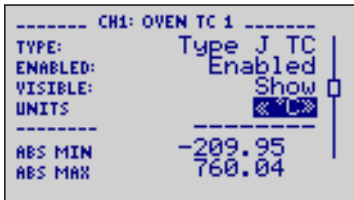
Large Font

To change channel display size from the **Home Screen**:

1. Press to enter the **Main Menu**
2. Use to highlight **Setup Menu**
3. Press to enter the **Setup Menu**
4. Use to highlight **Channel Size**
5. Use to choose the desired channel size
6. Press once to return to the **Main Menu**
7. Press again to return to the **Home Screen**

Change Channel Units

Channels can be customized to display readings in a variety of convenient units. Units available for selection will vary according to channel type.



Note: Changing display units will not affect logged data.

To change channel display from the **Home Screen**:

1. Press to view first **channel screen**
2. Use ◀▶ to view additional channels
3. On desired channel screen use ▲▼ to highlight **Units**
4. Use ◀▶ to choose the desired unit option
5. Press to return to the **Home Screen**

—OR—

1. Use ▲▼ to highlight desired channel
2. Press to view **channel screen**
3. Use ▲▼ to highlight **Units**
4. Use ◀▶ to choose the desired unit option
5. Press to return to the **Home Screen**

Note: Hit X to update all channels.

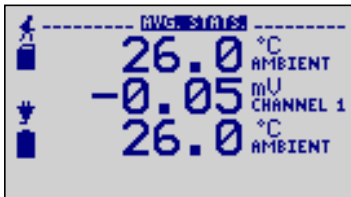
Statistics

Statistical information is generated based on the data measured by each channel.

Note: Information is only generated while the data logger is running and the reset does not affect statistics on download.

View Channel Statistics

Minimum, maximum, and average values are calculated for each channel and displayed in the statistics screens.



To view channel statistics from the **Home Screen**:

1. Use ◀▶ to view desired statistic screen
2. In statistics screen use ▲▼ to view statistics for each channel
3. Use ◀▶ to scroll back to the **Home Screen**

Clear Channel Statistics

Statistics may be cleared and reset at any time.

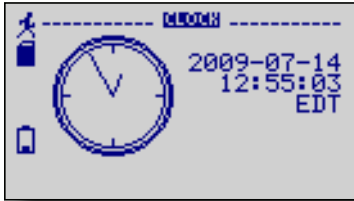


To clear channel statistics from the **Home Screen**:

1. Press to enter the **Main Menu**
2. Use ▲▼ to highlight **Clear Statistics**
3. Press to select **Clear Statistics**
4. Press to confirm statistics clear, to cancel

Time and Date Information

Current time and date information is available on the LCD. System time is automatically synchronized with your computer's clock.



To view time and date information from the **Home Screen**:

1. Press to enter the **Main Menu**
2. Use to highlight **Clock**
3. Press to select **Clock** and view time and date information

Manual (Push-button) Start

Devices set to start in Manual (Push-button) mode can be started through the device's display screens at the user's convenience.



To manually start device from the **Home Screen**:

1. Press to enter the **Main Menu**
2. Use to highlight **Start Device**
3. Press to select **Start Device**
4. Press to confirm device start, press to cancel

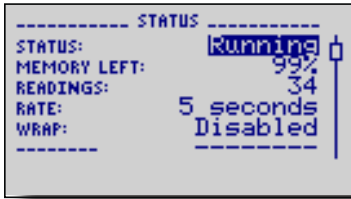
Device Menus

Device Status Menu

Information such as current recording status, reading rate, stop date and time, and calibration information can be found in the Device Status Menu.

To access the **Device Status Menu** from the **Home Screen**:

1. Press to enter the **Main Menu**
2. Use to highlight **Status**
3. Press to enter the **Device Status Menu**



Status – Device's current recording status.

Running - device is actively recording data

Stopped - device is not actively recording data

Delay - device is in Delay Start mode (start scheduled for future)

Manual - device is in Manual (push-button) Start mode

Memory Left – Percentage of memory available to store readings

Readings – Number of readings currently stored in device's memory

Rate – Reading rate (configurable using data logger software)

Wrap – Memory wrap (configurable using data logger software)

Enabled - when memory is full device will overwrite oldest data

Disabled - when memory is full device will stop recording data

Start Date/Time – Date and time device began recording data

Stop Date/Time – Date and time device will stop recording data (due to full memory or other user configured parameter)

Reading Date/Time – Date and time of last recorded reading

Cal Date – Date of last device calibration

Cal Due – Date device is due for recalibration

Note: It is important to keep your device properly calibrated to ensure accurate readings. Contact MadgeTech for further information regarding calibration services.

Device Setup Menu

Functions in the Device Setup Menu allow you to change home screen, display, and battery options.

To access the **Device Setup Menu** from the **Home Screen**:

1. Press to enter the **Main Menu**
2. Use to highlight **Setup Menu**
3. Press to enter the **Setup Menu**



Channel Size – Options for channel font size displayed on Home Screen.

Use to select font size

Small - up to six channels displayed on Home Screen

Medium - up to three channels displayed on Home Screen

Large - up to two channels displayed on Home Screen

Update Screen – Frequency of Home Screen Update

Use to select

Auto - Home Screen updates at user defined interval

Reading - Home Screen updates each time a reading is taken

Update After – User defined Home Screen update frequency

Use to set desired frequency

Auto-Scroll – When device is idle, screen view alternates between home and statistics screens

Use to Enable/ Disable auto-scroll

Display – Options for display visibility

Use ◀▶ to select

Auto - display turns off after two minutes of inactivity

On - display always on

Backlight – Options for use of display backlight

Use ◀▶ to select

Auto - backlight turns off after five seconds of inactivity

On - backlight always on

Off - backlight always off

LED – Options for use of status LEDs

Use ◀▶ to select

Enabled - status LEDs flash to indicate reading status

Disabled - LEDs off

Contrast – Set screen contrast value

Use ◀▶ to set desired contrast value

Battery Type – User defined based on the type of battery currently installed in the device

Use ◀▶ to select Lithium or Alkaline battery

Battery Life – Percentage of battery power remaining

Battery Voltage – Voltage supplied to the device by the battery

External Power – Presence of external power supply

External Voltage – Voltage supplied to the device by external power supply

Software Features

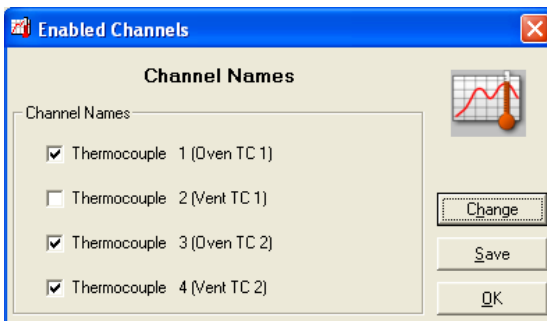
This section details several features of the data logger software that are particularly useful with the OctTemp2000 device. For further information regarding the software, please consult the Data logger Software Manual available at www.madgetech.com.

Enable and Disable Channels

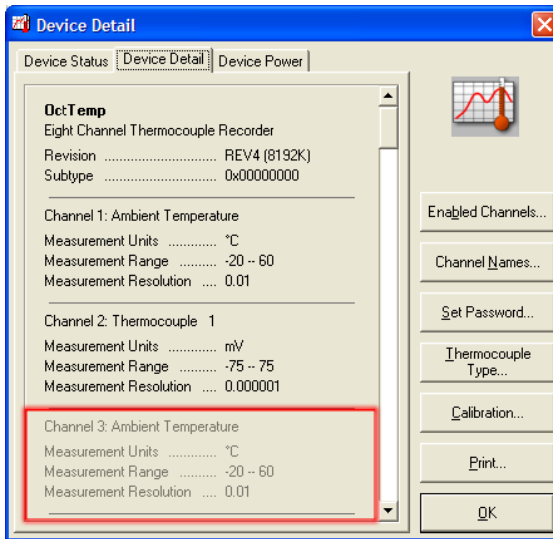
The user may choose to enable or disable channels using the software. Data from disabled channels will be visible on the LCD, but readings will not be recorded to the device's memory. Disabling a thermocouple channel also disables its corresponding ambient temperature channel.

To enable/disable channels in the software:

1. In the **Device** drop down menu select **Identify Device and Read Status** to view the **Device Status** screen
2. Select the **Device Detail** tab
3. Click **Enabled Channels** to show the **Enabled Channels Screen**
4. To edit the enabled channels click **Change**
5. Check the boxes next to channels to be enabled
6. Click **Save** to save changes
7. Click **OK** to return to the **Device Detail** screen
8. Click **OK** to return to the software's main screen



MadgeTech OctTemp2000



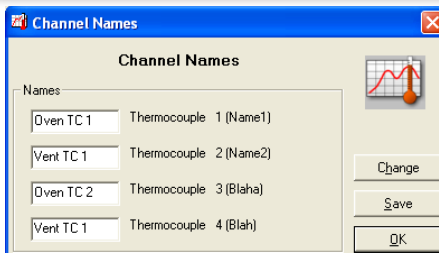
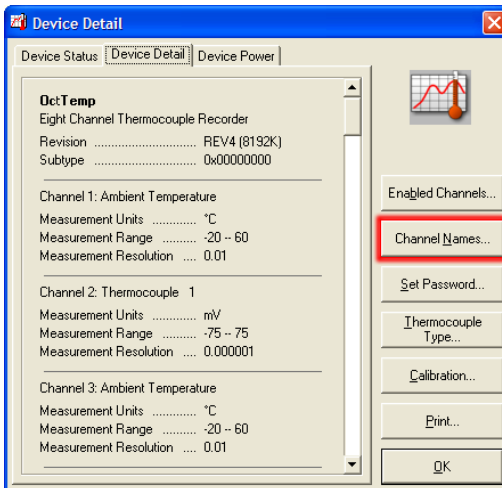
Notice that disabled thermocouple and ambient channels appear grayed-out on the Device Detail screen.

Name Channels

Each channel can be given an unique name for easy identification. Channel names are visible on the LCD and are used throughout the software and data files.

To name channels in the software:

1. In the **Device** drop down menu select **Identify Device and Read Status** to view the **Device Status** screen
2. Select the **Device Detail** tab
3. Click **Channel Names** to show the **Channel Names Screen**
4. To edit the channel names click **Change**
5. Type desired channel name in text box next to each channel
6. Click **Save** to save changes
7. Click **OK** to return to the **Device Detail** screen
8. Click **OK** to return to the software's main screen

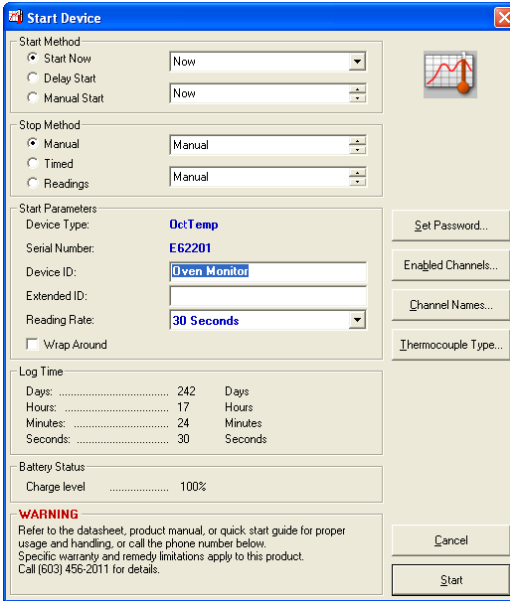


Change Device ID

Each OctTemp2000 can be given a device ID allowing for easy identification among multiple devices. Device IDs are displayed on the Home Screen of the LCD and are used throughout the software and data files.

To change Device ID in the software:

1. In the **Device** drop down menu select **Start Device** to view the **Start Device** screen
2. In the **Device ID** entry field type the desired Device ID name
3. Select other desired start functions
4. Click **Start** to start the device and save Device ID information



Device type and user defined Device ID are displayed on the Home Screen.

Battery Information



BATTERY WARNING

This data logger contains a lithium battery. Do not cut the battery open, incinerate, or recharge. Do not heat lithium batteries above the specified operating temperature.* Dispose of the battery in accordance with local regulations.

*See the individual specification sheets at www.madgetech.com.

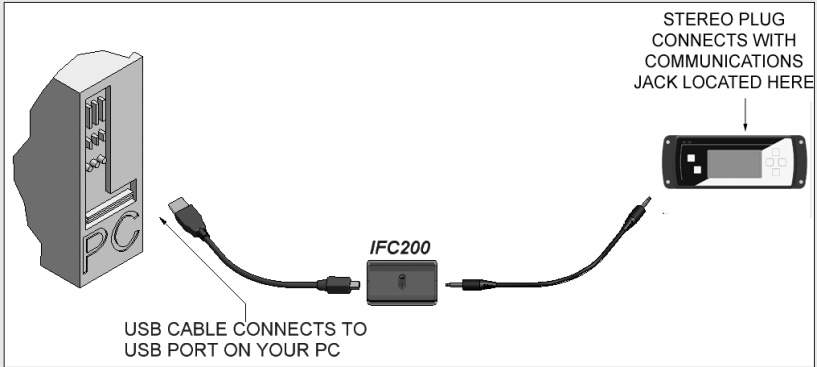
Battery Replacement

This product does not have any user-serviceable parts except the battery which should be replaced periodically. The battery life is affected by battery type, ambient temperature, sample rate, sensor selection, off-loads and LCD usage. The device has a battery status indicator on the LCD. If the battery indication is low, or if the device seems to be inoperable, it is recommended that the battery be replaced.

To replace the battery, locate the battery compartment cover on the back of the unit. Remove the two (2) 3/32 hex screws and expose the battery compartment. Use the pull tab to remove battery from compartment. Remove the old 9V battery from the battery clips and replace with a new 9V battery. We recommend using 9V lithium battery. An alkaline battery is acceptable, but will yield a shorter battery life.



Computer Interface



Fully insert the male connector of the IFC200 interface cable into the female receptacle of the data logger. Fully insert the female USB connector into the USB. (*Please see the Data Logger Software manual for further information.*)

**WARNING: Install driver before connecting a device using a USB for the first time. See the Software manual for further information.*

Warranty

Products manufactured by MadgeTech, Inc., are warranted against defective material and workmanship for a period of one year, starting from the date of shipment. In the event that a MadgeTech product is found to be defective, MadgeTech will repair or replace the product at its sole discretion. Such repair or replacement shall be the sole remedy of this warranty.

This warranty extends only to the original purchasing customer and does not apply to any unit, which in our sole judgment, has been subjected to:

- a) Operating or environmental conditions in excess of our written specifications or recommendations;
- b) Damage, misuse or neglect;
- c) Improper installation, repair or alteration.

This warranty excludes batteries.

Except as to title, this is our only warranty for the products. MadgeTech, Inc. expressly disclaims all other warranties, guarantees or remedies—whether expressed or implied or statutory—including any implied warranty of merchantability or fitness for a particular purpose. We also disclaim any implied warranty arising out of trade usage or out of a course dealing or course of performance. We do not guarantee the integrity of data or warranty that the products will operate uninterrupted or error-free.

MadgeTech data loggers and their associated software have been thoroughly tested and the documentation reviewed. However, MadgeTech does not warrant the performance of its products, or that the products or their associated software will operate as described in this manual.

Terms and Conditions

All products furnished by MadgeTech, Inc. ("Seller") shall be in accordance with the following terms and conditions unless otherwise stated in writing:

These Terms and Conditions ("Terms and Conditions") govern (a) all sales quotations and sales of components, equipment, parts, and other products ("Product") from, and (b) all service proposals and provisions of services by Seller to the buyer of the Products ("Buyer"). These Terms and Conditions shall take precedence over any terms and conditions which appear on Buyer's order or other form or any other writing or electronic transmission from Buyer. Any terms or conditions on any of Buyer's forms, recordings, electronic transmissions, or orders that are different from or in addition to these Terms and Conditions are specifically rejected. Any modification to these Terms and Conditions must be agreed to and executed in writing by Seller. Seller's failure to object to provisions contained in any communication from Buyer shall not be construed as a waiver of these Terms and Conditions or as an acceptance of any such provision. Trade custom, trade usage and past performance are superseded by these terms and conditions and shall not be used to interpret these terms and conditions. In the event that Product includes software, the software is licensed to Buyer in object code form only in accordance with Seller's standard Software License Terms that are included below.

20. Limited Warranty.

A. Seller Manufactured Products and Seller Provided Services.

Seller warrants to Buyer that:

- (i) Seller manufactured Software (as defined in Section 23 below) shall execute the programming instructions provided by Seller, and
- (ii) Seller manufactured Product and consumables and Seller provided services shall be free from material defects in material and workmanship under normal uses and care, in each case until the expiration of the applicable warranty period specified below

Seller manufactured Product is warranted for the shorter of twelve (12) months from the date of initial installation or fifteen (15) months from the date of shipment by Seller. Seller manufactured consumables and Software, and Seller provided services are warranted for a period of ninety (90) days from the date of shipment or completion, as applicable. If Buyer discovers any warranty defect and notifies Seller thereof in writing during the applicable warranty period, Seller shall, at its option, promptly correct any defects that are found by Seller, or repair or replace F.O.B. point of manufacture that portion of the Seller manufactured Products, consumables or Software found by Seller to be defective, or refund the price of the defective portion of the Seller manufactured Products, consumables or Software, or of the defective portion of the Seller provided services. All replacements or repairs necessitated by inadequate maintenance, normal wear and usage, unsuitable power sources, unsuitable environmental conditions, accident, misuse, improper installation, modification, repair, storage or handling, or any other cause not the fault of Seller are not covered by this limited warranty, and shall be at Buyer's expense. Seller shall not be obligated to pay any costs or charges incurred by Buyer or any other party except as may be agreed upon in writing in advance by an authorized representative of Seller. All costs of dismantling, re-installation and freight, and the time and expenses of Seller's personnel for site travel and diagnosis under this limited warranty shall be borne by Buyer unless accepted in writing by Seller. Seller manufactured Products, consumables and Software, and Seller provided services, repaired, replaced or corrected during the applicable warranty period shall be in warranty for the greater of the remainder of the applicable original warranty period or ninety (90) days.

THE FOREGOING STATES THE SOLE AND EXCLUSIVE WARRANTY AND LIABILITY OF SELLER. FOR BREACH OF WARRANTY AND IS IN LIEU OF ALL OTHER REPRESENTATIONS,

WARRANTIES AND COVENANTS, EXPRESSED OR IMPLIED, IN REGARD THERETO. EXCEPT FOR THE EXPRESS LIMITED WARRANTY SET FORTH IN THIS SECTION, SELLER DOES NOT MAKE AND HEREBY DISCLAIMS ANY AND ALL OTHER REPRESENTATIONS AND WARRANTIES OF ANY KIND WHATSOEVER, WHETHER EXPRESSED, IMPLIED OR STATUTORY, INCLUDING, WITHOUT LIMITATION, ANY IMPLIED WARRANTIES OF MERCHANTABILITY, FITNESS FOR A PARTICULAR PURPOSE, NONINFRINGEMENT OR ACCURACY, ADEQUACY OR COMPLETENESS OF DATA MEASUREMENT, WITH RESPECT TO ANY OF THE SELLER MANUFACTURED PRODUCTS, CONSUMABLES OR SOFTWARE, OR ANY OF THE SELLER PROVIDED SERVICES.

Any drawings submitted with the Products are only to show the general style, arrangement, and approximate dimensions of the Products.

B. Equipment, Consumables, Software and Services Manufactured or Provided by Others.

SELLER DOES NOT MAKE, AND HEREBY DISCLAIMS, ANY AND ALL REPRESENTATIONS AND WARRANTIES OF ANY KIND WHATSOEVER, WHETHER EXPRESSED, IMPLIED OR STATUTORY, INCLUDING, WITHOUT LIMITATION, ANY IMPLIED WARRANTIES OF MERCHANTABILITY PARTICULAR PURPOSE, NONINFRINGEMENT OR ACCURACY, ADEQUACY OR COMPLETENESS OF DATA MEASUREMENT, WITH RESPECT TO ANY EQUIPMENT, COMPONENTS, PARTS, CONSUMABLES, SOFTWARE OR SERVICES SOLD TO BUYER BY SELLER THAT ARE NOT MANUFACTURED OR PROVIDED BY SELLER. Seller shall assign the manufacturer's or service provider's warranty applicable to such equipment, components, parts, consumables, Software and services to the extent permitted, to Buyer. Seller will provide Buyer with available warranty information.

21. Limitations.

IN NO EVENT, REGARDLESS OF THE FORM OF THE CLAIM OR CAUSE OF ACTION (WHETHER BASED IN CONTRACT, INFRINGEMENT, NEGLIGENCE, STRICT LIABILITY, OTHER TORT OR OTHERWISE), SHALL SELLER'S LIABILITY EXCEED THE PRICE ACTUALLY PAID BY BUYER TO SELLER FOR THE SPECIFIC PRODUCTS, CONSUMABLES AND/OR SOFTWARE MANUFACTURED, AND/OR SERVICES PROVIDED, BY SELLER GIVING RISE TO THE CLAIM OR CAUSE OF ACTION. SELLER SHALL NOT, UNDER ANY CIRCUMSTANCES, BE LIABLE FOR ANY LOSS OF REVENUE, LOSS OF PROFITS OR ANY INCIDENTAL, INDIRECT, SPECIAL, EXEMPLARY OR CONSEQUENTIAL DAMAGES, WHETHER OR NOT FORESEEABLE. NO ACTION, REGARDLESS OF FORM, ARISING OUT OF ANY TRANSACTION GOVERNED BY THESE TERMS AND CONDITIONS, MAY BE BROUGHT BY EITHER PARTY MORE THAN TWO (2) YEARS AFTER THE CAUSE OF ACTION HAS ACCRUED. The foregoing allocation of risk and limitation of liability has been agreed to by the parties and forms the basis of their willingness to enter into any accepted order.

22. Software License.

(A) For purposes hereof, "Software" means the computer programs included in the Product at delivery, together with all codes, techniques, software tools, formats, designs, concepts, methods, and ideas associated with those computer programs. The term also includes all copies of any part of the software, as well as the manual(s) and printed materials provided by Seller.

(B) Seller grants Buyer a non- exclusive, non-transferable license to use the Software, in object code form only, according to the terms set forth below. Buyer may operate the Software only (i) in conjunction with and as part of the Product; (ii) in the manner in which it is intended by Seller; and (iii) at Buyer's plant site where the Product is first used. Buyer may negotiate with Seller separate licenses to use the Software at other plant sites. Buyer's use of Software shall be governed exclusively by Seller's and/or an third party owner's applicable license terms.

(C) Buyer shall not (i) make the Software available to any person or entity other than its

MadgeTech OctTemp2000

employees, who must use the Software only as specified above; (ii) modify the Software or merge it with another program; (iii) reverse engineer, disassemble, decompile, or make any attempt to discover the source code of the Software; (iv) translate or create derivative works based on the Software; (v) remove, obscure, or alter any notice of the patent, copyright, or other proprietary rights related to the Software; (vi) sub-license, sell, lend, rent, or lease any portion of the Software; (vii) copy any portion of the Software; (viii) operate the Software other than in conjunction with operation of Product; or (ix) transfer the Software in violation of applicable United States Export laws and regulations.

6 Warner Road • Warner, NH 03278
Phone 603.456.2011 • Fax 603.456.2012
www.madgetech.com • info@madgetech.com