

OCTTCTEMPV2

8-CHANNEL THERMOCOUPLE

DATA LOGGER



Features

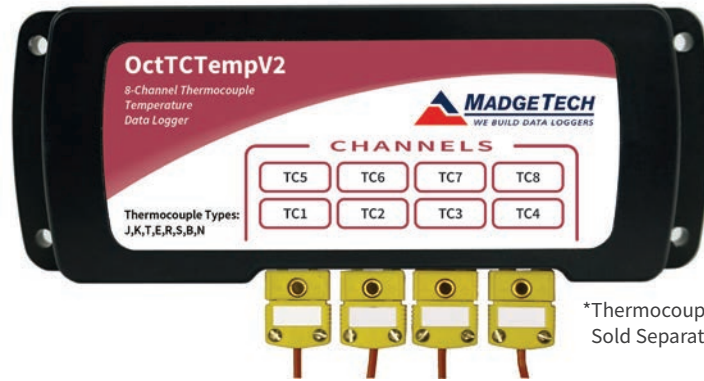
- Up to 4 Hz Reading Rate
- 130,944 Readings per Channel
- Open Channel Detection
- Title Channels
- Accepts Thermocouple Types J, K, T, E, R, S, B, N
- External Power or User Replaceable Battery
- Pushbutton or Programmable Start
- Calibration Certificate included

Benefits

- Simple Setup and Installation
- Minimal Long-Term Maintenance
- Long-Term Field Deployment

Applications

- Warehouse Monitoring
- Refrigerator Monitoring
- Medical and Pharmaceutical
- Oven Monitoring
- Smoke Houses
- Food Processing
- HVAC
- Engine Studies



*Thermocouple Plugs/Probes Sold Separately

The OctTCTempV2 is an 8-channel thermocouple data logger with a reading rate of up to 4 Hz. It can measure and record 130,944 readings per channel. To maximize memory capacity, users can enable or disable channels. For easy identification, each channel can be named with up to a ten digit title.

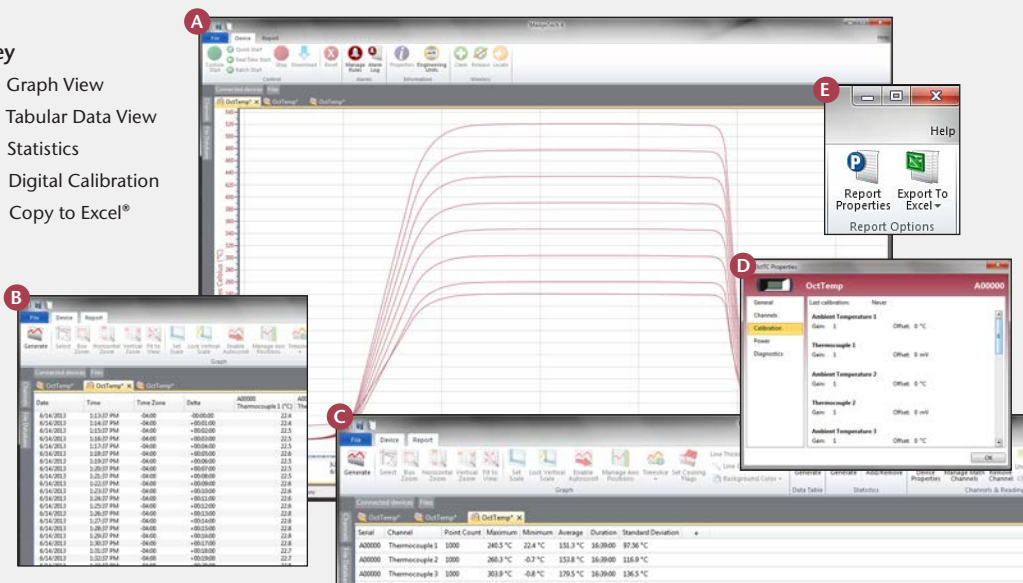
In addition, the OctTCTempV2 features individual cold junction compensation for each channel providing increased accuracy and response time, and if a probe is removed or severed during logging, the software automatically annotates the data.

The OctTCTempV2 is ideal for a variety of applications, whether it is remote temperature monitoring, or multiple points in a central location. Data from all channels is simultaneously logged. After the monitoring cycle is complete, data can be downloaded for analysis.

MADGETECH DATA LOGGER SOFTWARE

Key

- A** Graph View
- B** Tabular Data View
- C** Statistics
- D** Digital Calibration
- E** Copy to Excel®



Software Features:

- Multiple graph overlay
- Statistics
- Digital calibration
- Zoom in/ zoom out
- Lethality equations (F0, PU)
- Mean Kinetic Temperature
- Full time zone support
- Data annotation
- Min./Max./Average lines
- Data table view
- Automatic report generation
- Summary view
- Multilingual

OCTTCTEMPV2 SPECIFICATIONS*

*Specifications are subject to change without notice. Specific warranty remedy limitations apply.

8 Internal Channels

Temperature Range:	-20 °C to +60 °C (-4 °F to +140 °F)
Temperature Resolution:	0.01 °C (0.018 °F)
Calibrated Accuracy:	±0.5 °C (0 °C to 50 °C)

8 Remote Channels

Remote Channel Thermocouple Types:	J, K, T, E, R, S, B, N		
Thermocouple Connection:	Female subminiature (SMP)		
Cold Junction Compensation:	Automatic, based on internal channel		
Maximum Thermocouple Resistance:	1000 Ω, <100 Ω recommended		
Thermocouple	Range (°C)	Resolution	Accuracy**
J	-210 to +760	0.1 °C	±0.5 °C
K	-270 to +1370	0.1 °C	±0.5 °C
T	-270 to +400	0.1 °C	±0.5 °C
E	-270 to +980	0.1 °C	±0.5 °C
R	-50 to +1760	0.5 °C	±2.0 °C
S	-50 to +1760	0.5 °C	±2.0 °C
B	+50 to +1820	0.5 °C	±2.0 °C
N	-270 to +1300	0.1 °C	±0.5 °C
Start Modes:	Software programmable immediate start or delay start up to six months in advance		

**Thermocouple accuracy is specified with a 24 AWG.

Real Time Recording:	May be used with PC to monitor and record data in real time
Memory: (all 8 Channels enabled)	130,944 readings per channel
Reading Rate:	4 Hz up to 1 reading every 24 hours
Calibration:	Digital calibration through software
Calibration Date:	Automatically recorded within device
Battery Type:	9 Volt lithium or alkaline battery included, user replaceable
Battery Life:	18 months typical
Data Format:	Date and time stamped °C, °F, K, °R, mV, V
Time Accuracy:	±1 minute/month
Computer Interface:	USB (Interface cable required); 115,200 baud
Software:	Windows XP SP3 or later MadgeTech 4 software, version 4.2.12.0 or later
Operating Environment:	-20 °C to +60 °C (-4 °F to +140 °F), 0 %RH to 95 %RH non-condensing
Dimensions:	2.7 in x 7.2 in x 1.3 in (69 mm x 184 mm x 32 mm)
Material:	Black anodized aluminum
Weight:	17 oz (490 g)
Approvals:	CE

BATTERY WARNING: BATTERY MAY LEAK, FLAME OR EXPLODE IF DISASSEMBLED, SHORTED, CHARGED, CONNECTED TOGETHER, MIXED WITH USED OR OTHER BATTERIES, EXPOSED TO FIRE OR HIGH TEMPERATURE. DISCARD USED BATTERY PROMPTLY. KEEP OUT OF REACH OF CHILDREN.

ORDERING INFORMATION

MODEL	PART NUMBER	DESCRIPTION
OCTTCTEMPV2	902087-00	8-Channel Thermocouple Data Logger
IFC200	900298-00	Software, manual and USB interface cable
U9VL-J	901804-00	Replacement battery for OctTCTempV2

ASK ABOUT OUR OTHER DATA LOGGERS

- Temperature
- Humidity
- Pressure
- pH
- Level
- Shock
- LCD Display
- Pulse/Event/State
- Current
- Voltage
- Wireless
- Intrinsically Safe
- Spectral Vibration
- Motion

Contact:
Industrial Process Measurement, Inc.
3910 Park Avenue, Unit 7
Edison, NJ 08820
732-632-6400
support@instrumentation2000.com
http://www.instrumentation2000.com