

# OCTRTDTEMPV2

## 8-CHANNEL RTD TEMPERATURE DATA LOGGER



### Features

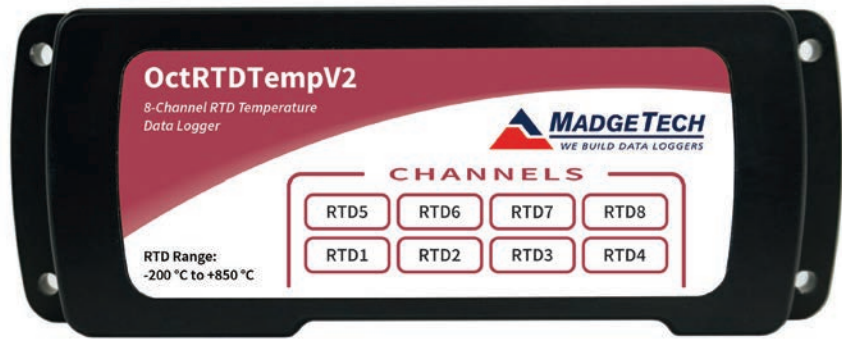
- $\pm 0.04$  °C Calibrated Accuracy
- Real time Operation
- Up to 4 Hz Reading Rate
- Pushbutton or Programmable Start Time
- Title Channels
- Calibration Certificate included
- External Power or User Replaceable Battery
- Accepts 2, 3 and 4-wire RTD's

### Benefits

- Simple Setup and Installation
- Minimal Long-Term Maintenance
- Long-Term Field Deployment

### Applications

- Calibration Chamber Monitoring
- Process Verification/Validation
- Warehouse Monitoring
- Precision Temperature Monitoring
- HVAC
- Clean Rooms
- Medical/Pharmaceutical
- Museum Monitoring
- Environmental Studies
- Replace Costly Strip Chart Recorders



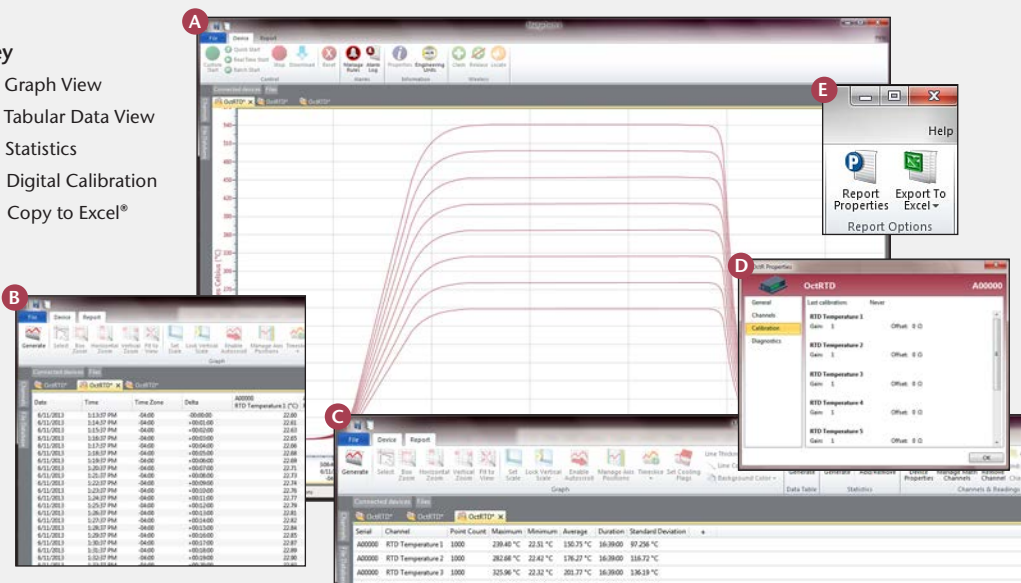
The OctRTDTempV2 is an 8-channel, RTD based temperature data logger with a reading rate of up to 4 Hz. It can measure and record up to 174,592 readings per channel. To maximize memory capacity, users can enable or disable channels. For easy identification, each channel can be named with up to a ten digit title. The storage medium is non-volatile solid state memory, providing maximum data security even if the battery becomes discharged. The OctRTDTempV2 makes data retrieval quick and easy.

Using the MadgeTech Software, starting, stopping and downloading from the OctRTDTempV2 is simple and easy. Graphical, tabular and summary data is provided for analysis and data can be viewed in multiple units, using the Engineering Units function. The data can also be automatically exported to Excel® for further calculations.

## MADGETECH DATA LOGGER SOFTWARE

### Key

- A** Graph View
- B** Tabular Data View
- C** Statistics
- D** Digital Calibration
- E** Copy to Excel®



### Software Features:

- Multiple graph overlay
- Statistics
- Digital calibration
- Zoom in/ zoom out
- Lethality equations (F0, PU)
- Mean Kinetic Temperature
- Full time zone support
- Data annotation
- Min./Max./Average lines
- Data table view
- Automatic report generation
- Summary view
- Multilingual

# OCTRTDTEMPV2 SPECIFICATIONS\*

\*Specifications are subject to change without notice. Specific warranty remedy limitations apply.

<b>**Temperature Measurement Range:</b>	18.5 Ω to 390.5 Ω -200 °C to +850 °C (-328 °F to +1562 °F) (Probe Dependent)
<b>Resolution:</b>	0.0005 Ω 0.01 °C (0.018 °F) (Probe Dependent)
<b>***Calibrated Accuracy:</b>	±0.015 Ω @ 25 °C (77 °F) ambient ±0.04 °C (±0.072 °F) (Probe Dependent)
<b>Specified Accuracy Range:</b>	18.5 Ω to 175.9 Ω -200 °C to +200 °C (-328 °F to 392 °F)
<b>Channels:</b>	8
<b>Input Connection:</b>	Removable screw terminal; 2, 3 or 4 wire interface
<b>Temperature Effect on Span:</b>	2 ppm/°C typical
<b>Start Modes:</b>	Software programmable immediate start or delay start up to six months in advance, programmable in software

\*\*Temperature specifications based on ideal 100 Ω Pt RTD compliant with IEC 751 (1983) and ITS-90, 5000 Ω FSR (accuracy based on 36 in lead wire RTD with 4 wire configuration)

\*\*\*Calibrated accuracies based on standard MadgeTech calibrations for 0 Ω to 200 Ω range.

Warning: Note the polarity instructions. Do not attach wires to the wrong terminals. 100 Ω, 2 or 4 wire RTD probes are recommended for the most accurate performance. Most 100 Ω, 3 wire RTD probes will work, but MadgeTech cannot guarantee the accuracy. To determine whether or not the 3-wire RTD probe will work, the resistance between the two same colored wires should be less than 1 Ω. (Note: Please contact the manufacturer of the RTD probe for questions on the resistance.)

<b>Real Time Recording:</b>	May be used with PC to monitor and record data in real time
<b>Memory:</b> (all 8 channels enabled)	174,592 readings per channel
<b>Reading Rate:</b>	4 Hz up to 1 reading every 24 hours
<b>Calibration:</b>	Digital calibration through the software
<b>Calibration Date:</b>	Automatically recorded within device
<b>Battery Type:</b>	9V lithium or alkaline battery included, <b>user replaceable</b>
<b>Battery Life:</b>	1 year typical
<b>Data Format:</b>	Date and time stamped °C, °F, K, °R; Ω
<b>Time Accuracy:</b>	±1 minute/month
<b>Computer Interface:</b>	USB (Interface cable required); 115,200 baud
<b>Software:</b>	Windows XP SP3 or later MadgeTech 4 software, version 4.2.12.0 or later
<b>Operating Environment:</b>	-20 °C to +60 °C (-4 °F to +140 °F), 0 %RH to 95 %RH non-condensing
<b>Dimensions:</b>	2.7 in x 7.2 in x 1.3 in (69 mm x 184 mm x 32 mm)
<b>Weight:</b>	17 oz (490 g)

**BATTERY WARNING:** BATTERY MAY LEAK, FLAME OR EXPLODE IF DISASSEMBLED, SHORTED, CHARGED, CONNECTED TOGETHER, MIXED WITH USED OR OTHER BATTERIES, EXPOSED TO FIRE OR HIGH TEMPERATURE. DISCARD USED BATTERY PROMPTLY. KEEP OUT OF REACH OF CHILDREN.

## ORDERING INFORMATION

MODEL	PART NUMBER	DESCRIPTION
OCTRTDTEMPV2	902073-00	8-Channel RTD Temperature Data Logger
IFC200	900298-00	Software, manual and USB interface cable
U9VL-J	901804-00	Replacement battery for OctRTDTempV2

**ASK ABOUT OUR OTHER DATA LOGGERS**

- Temperature
- Humidity
- Pressure
- pH
- Level
- Shock
- LCD Display
- Pulse/Event/State
- Current
- Voltage
- Wireless
- Intrinsically Safe
- Spectral Vibration
- Motion

Contact:  
Industrial Process Measurement, Inc.  
3910 Park Avenue, Unit 7  
Edison, NJ 08820  
732-632-6400  
support@instrumentation2000.com  
http://www.instrumentation2000.com