

# OCTRTD

## 8 CHANNEL RTD TEMPERATURE DATA LOGGER



### Features

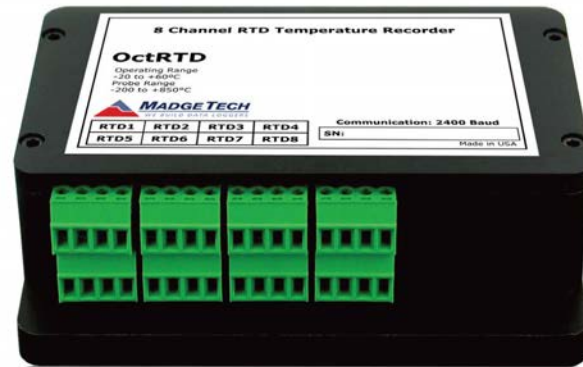
- $\pm 0.1$  °C Calibrated Accuracy
- Real time Operation
- Low Cost
- Programmable Start Time
- Reusable
- User-friendly
- Accepts 2, 3 and 4-wire RTD's

### Benefits

- Simple Setup and Installation
- Minimal Long-Term Maintenance
- Long-Term Field Deployment

### Applications

- Calibration Chamber Monitoring
- Process Verification/Validation
- Warehouse Monitoring
- Precision Temperature Monitoring
- HVAC
- Clean Rooms
- Medical/Pharmaceutical
- Museum Monitoring
- Environmental Studies
- Replace Costly Strip Chart Recorders

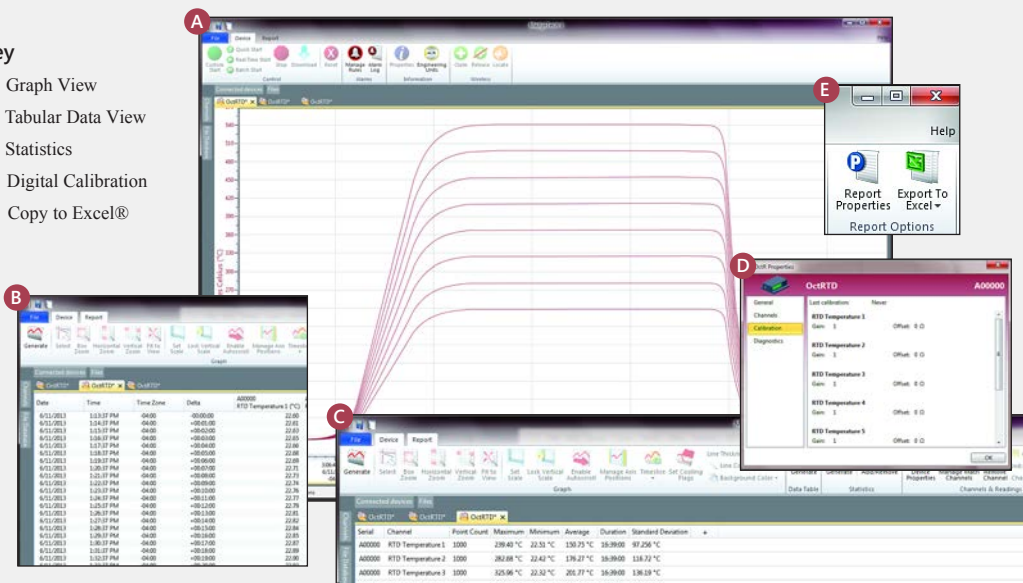


The OctRTD is an 8 channel, battery powered, stand alone, RTD based temperature recorder. This is an all-in-one compact, portable, easy to use device that will measure and record up to 10,922 measurements per channel. The storage medium is non-volatile solid state memory, providing maximum data security even if the battery becomes discharged. The device can be started and stopped directly from your computer and its small size allows it to fit almost anywhere. The OctRTD makes data retrieval quick and easy. Simply plug it into an empty COM or USB port and our user-friendly software does the rest.

## MADGETECH DATA LOGGER SOFTWARE

### Key

- A** Graph View
- B** Tabular Data View
- C** Statistics
- D** Digital Calibration
- E** Copy to Excel®



### Software Features:

- Multiple graph overlay
- Statistics
- Digital calibration
- Zoom in/ zoom out
- Lethality equations (F0, PU)
- Mean Kinetic Temperature
- Full time zone support
- Data annotation
- Min./Max./Average lines
- Data table view
- Automatic report generation
- Summary view
- Multilingual

# OCTRTD SPECIFICATIONS\*

## Temperature\*\*

<b>Measurement Range:</b>	-200 °C to +850 °C (-328 °F to +1562 °F)
<b>Resolution:</b>	0.01 °C (0.018 °F)
<b>***Calibrated Accuracy:</b>	±0.1 °C @ 25 °C ambient
<b>Specified Accuracy Range:</b>	-200 °C to +850 °C (-328 °F to +1562 °F)

## Resistance

<b>Nominal Range:</b>	0 to 500 Ω
<b>Resolution:</b>	0.001 Ω
<b>***Calibrated Accuracy:</b>	±0.030 Ω @ 25 °C ambient
<b>Specified Accuracy Range:</b>	0 to 500 Ω
<b>Channels:</b>	8
<b>Input Connection:</b>	Removable screw terminal; 2, 3 or 4 wire interface
<b>Temperature Effect on Span:</b>	< 2.5 ppm/°C; < 1.0 ppm/°C typical
<p>**Temperature specifications based on ideal 100 Ω Pt RTD compliant with IEC 751 (1983) and ITS-90, 5000 Ω FSR (accuracy based on 36 in lead wire RTD with 4 wire configuration)</p> <p>***Calibrated accuracies based on standard MadgeTech calibrations for 0 to 200 Ω range.</p>	
<b>Start Modes:</b>	Software programmable immediate start or delay start up to six months in advance, programmable in software

<b>Real Time Recording:</b>	May be used with PC to monitor and record data in real time
<b>Memory:</b>	10,922 readings per channel, for a total of 87,376 readings
<b>Reading Rate:</b>	1 reading every 2 seconds up to 1 reading every 12 hours
<b>Calibration:</b>	Digital calibration through the software
<b>Calibration Date:</b>	Automatically recorded within device
<b>Battery Type:</b>	9V lithium or alkaline battery included, <b>user replaceable</b>
<b>Battery Life:</b>	1 year typical
<b>Data Format:</b>	Date and time stamped °C, °F, K, °R; Ω
<b>Time Accuracy:</b>	±1 minute/month (at +20 °C (+68 °F), RS232 port not in use)
<b>Computer Interface:</b>	PC serial or USB (interface cable required); 2,400 baud
<b>Software:</b>	XP SP3/Vista/Windows 7/Windows 8
<b>Operating Environment:</b>	-20 °C to +60 °C (-4 °F to +140 °F), 0 %RH to 95 %RH non-condensing
<b>Dimensions:</b>	3.5 in x 4.4 in x 1.5 in (89 mm x 112 mm x 39 mm)
<b>Weight:</b>	15.9 oz (450 g)

**BATTERY WARNING: FIRE, EXPLOSION, AND SEVERE BURN HAZARD. DO NOT SHORT CIRCUIT, CHARGE, FORCE OVER DISCHARGE, CRUSH, PENETRATE, OR INCINERATE. BATTERY MAY LEAK OR EXPLODE IF HEATED ABOVE 80 °C (176 °F).**

\*SPECIFICATIONS ARE SUBJECT TO CHANGE WITHOUT NOTICE. SPECIFIC WARRANTY REMEDY

## ORDERING INFORMATION

MODEL	DESCRIPTION
OCTRTD	Temperature Data Logger
IFC110	Software, manual and RS232 interface cable
IFC200	Software, manual and USB interface cable
Calibration Certificate	Calibration Certificate available for data logger
U9VL-J	Replacement battery for OctRTD

ASK ABOUT  
OUR OTHER  
DATA  
LOGGERS

Temperature  
Humidity  
Pressure  
pH  
Level  
Shock  
LCD Display  
Pulse/Event/State  
Current  
Voltage  
Wireless  
Intrinsically Safe  
Spectral Vibration  
Motion