

# 1 Install Software

- A** Insert the MadgeTech Data Logger Software USB Flash Drive into an available USB port on your PC. Click the **Start** menu and choose **Computer or My Computer**. Browse to the Removable Disk drive corresponding to the USB port you selected.

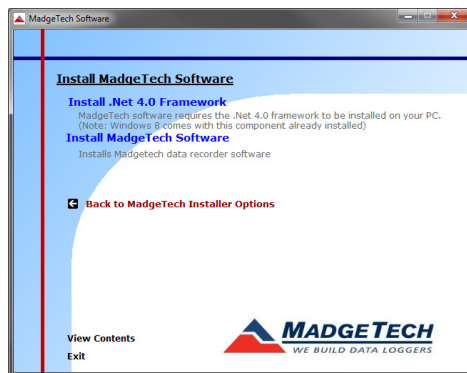
For Windows 7 users, a dialog box may appear with a list of options. Select "Open Folder to View files". If you are not prompted, click the **Start** menu and choose **Computer or My Computer** and browse to the Removable Disk drive corresponding to the USB port you selected.



Once you locate the contents of the USB flash drive, click on **auto-run**.

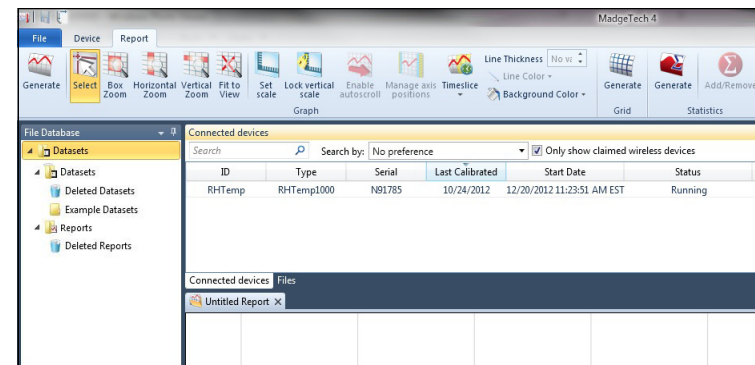
A set-up screen will display with options as shown above.

- B** Click on the **MadgeTech Software** link from the set-up screen to start the installation of the Data Logger Software. The **Install MadgeTech Software** window will appear, click on the **Install MadgeTech Software** link. Follow the on screen prompts to complete the installation. Click Back to MadgeTech Contents when completed. See the Software Manual or go online at [www.madgetech.com](http://www.madgetech.com) for additional information.



# 2 Connect RS232 Data Logger Interface

- A** Connect the RS232 end of the IFC110/102/103 Interface to the corresponding port on your PC. The installation of the RS232 data logger interface is now complete. Start the MadgeTech Data Logger Software. (If necessary, see the software manual for additional information on the software)
- B** Start the MadgeTech Data Logger Software. (If necessary, see the software manual for additional information on the software)
- C** Your device(s) will appear in the list displayed, select your device in this list and choose your desired start method.



## Additional Information

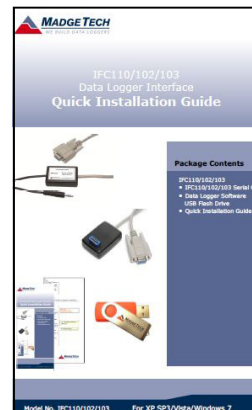
For additional information/troubleshooting assistance, refer to the User Guide on the Data Logger Software USB Flash Drive, e-mail [support@madgetech.com](mailto:support@madgetech.com) or call (603) 456-2011.

# IFC110/102/103 Data Logger Interface Quick Installation Guide

## Package Contents

IFC110/102/103

- IFC110/102/103 Serial Cable
- Data Logger Software on USB Flash Drive
- Quick Installation Guide



## Contact US

### Website:

<http://www.madgetech.com>

### E-mail Support:

[support@madgetech.com](mailto:support@madgetech.com)

### Phone:

(603) 456-2011

### Fax:

(603) 456-2012

### Address:

MadgeTech, Inc.  
6 Warner Road, Warner, NH 03278

DOC-QIG1091-00

Model No. IFC110/102/103

For XP SP3/Vista/Windows 7/Windows 8