

Installation Guide for ICON

for Windows XP, Windows Vista and Windows 7



INOR USB Interface is a non-Ex-approved product but is intended to be used for all type of transmitters when in safe areas.



Do not connect the USB Interface to your USB port until prompted.



If you are updating your ConSoft software, make sure your USB Interface has firmware 1.2.00 or higher.

Version control:

- *Connect the USB Interface to a PC*
- *Start ConSoft*
- *Click "About" or "Help" – "About"*



The installation guide must be read prior to installation.

Table of contents.

1. Open INOR Setup Menu (XP)	3
2. Open INOR Setup Menu (Vista).....	4
3. Open INOR Setup Menu (Windows 7)	7
4. Installing drivers for the USB Interface.....	10
5. Installing configuration software ConSoft.....	12
6. Installing external configuration softwares	16
7. Troubleshooting	17

1. Open INOR Setup Menu Windows XP

1.1. For software and drivers located on a USB memory stick

- 1.1.1. Insert the USB memory stick into a USB port.

The first time the memory stick is connected to your PC it will be automatically installed. A message will pop up down in the right corner of the screen during installation, just wait.



- 1.1.2. Wait a few seconds, the computer will display a menu of actions to perform as shown in figure 1.1.2.
- 1.1.3. Select "Start INOR setup". Click on [OK]. The **INOR Setup Menu** will start as shown in figure 1.1.3.



Figure 1.1.2

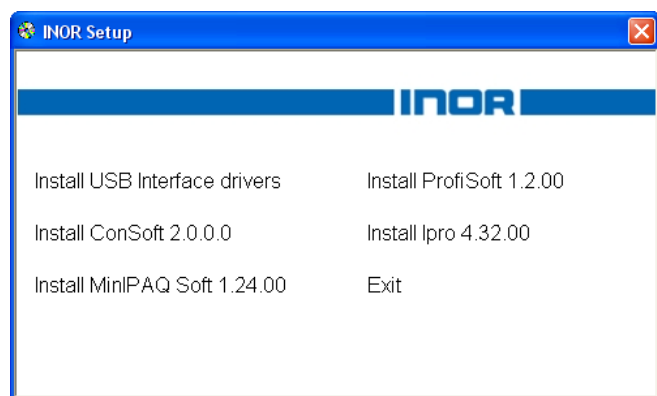


Figure 1.1.3

1.2. For software and drivers downloaded from www.inor.com

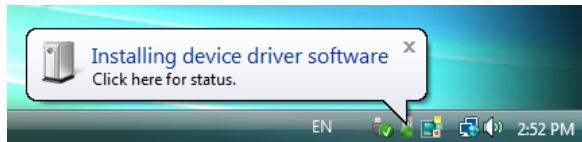
- 1.2.1. When you are downloading the files from internet you may get the options to [Run] or [Save]. By choosing [Run], the setup process starts once the setup file is downloaded.
If you selected [Save], double click on the downloaded file.
Depending on your Windows security settings you may see a Security Warning box, if so, click on [Run].
- 1.2.2. The files will begin to extract. After extracting the files the **INOR Setup Menu** will start as shown in figure 1.1.3.

2. Open INOR Setup Menu Windows Vista

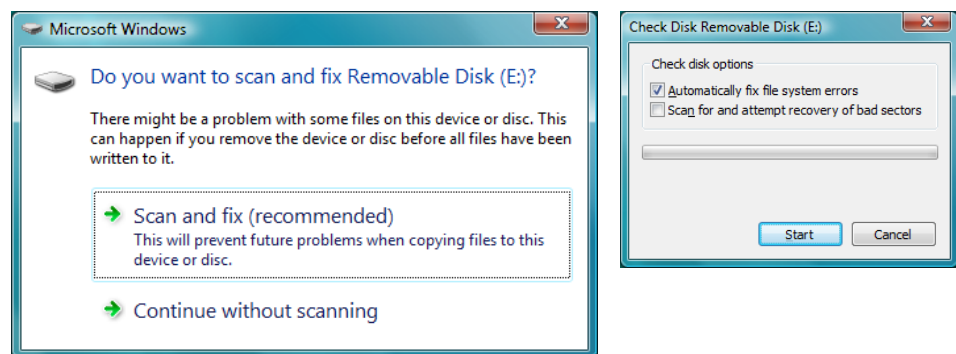
2.1. For software and drivers located on a USB memory stick

2.1.1. Insert the USB memory stick into a USB port.

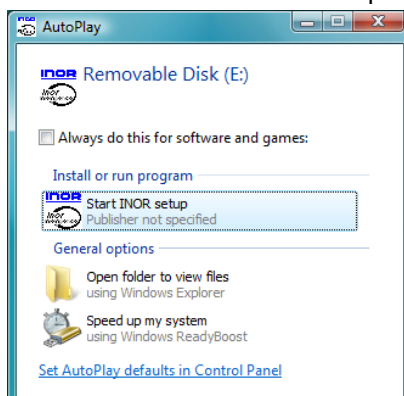
The first time the memory stick is connected to your PC it will be automatically installed. A message will pop up down in the right corner of the screen during installation, just wait.



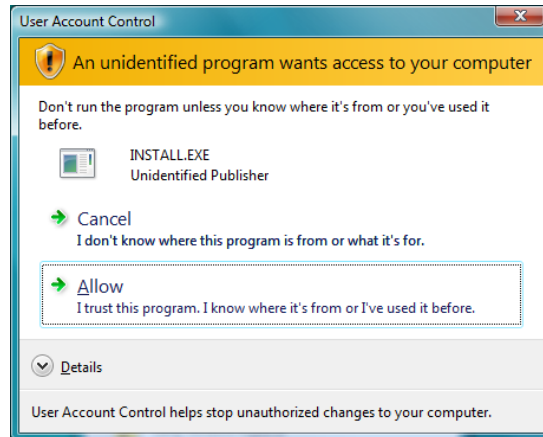
2.1.1.1. If the **Do you want to scan and fix Removable Disk?** message is displayed, choose "Scan and fix (recommended)". Then click [Start]. After scanning, remove the USB memory and connect it again.



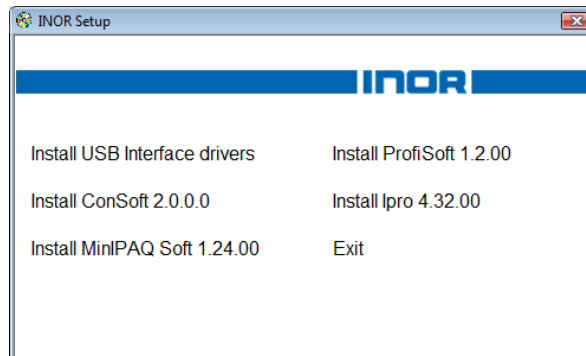
2.1.2. The computer will display a menu of actions to perform. Click on "Start INOR setup".



- 2.1.3. Depending on your Windows security settings a **User Account Control** dialog box may be displayed. Click on “Allow”.



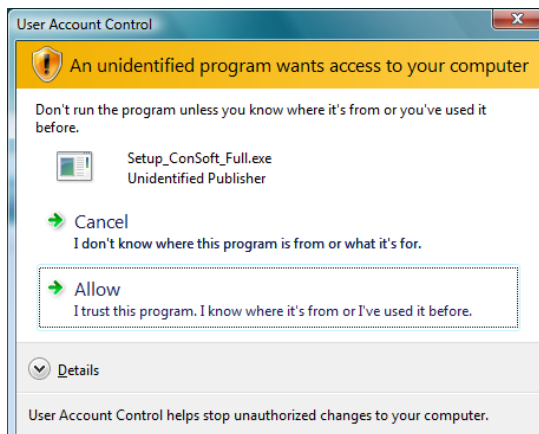
- 2.1.4. The **INOR Setup Menu** is displayed.



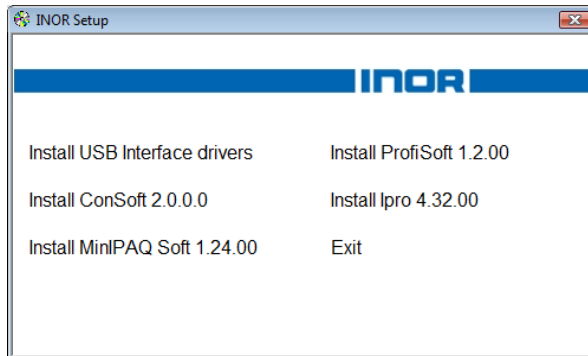
2.2. For software and drivers downloaded from www.inor.com

- 2.2.1. When you are downloading the files from internet you may get the options to [Run] or [Save]. By choosing [Run], the setup process starts once the setup file is downloaded.
If you selected [Save], double click on the downloaded file.

Depending on your Windows security settings a **User Account Control** dialog box may be displayed. Click on “Allow”.



- 2.2.2. The files will begin to extract.
After extracting the files the **INOR Setup Menu** will start as shown.

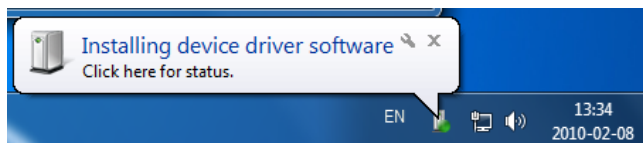


3. Open INOR Setup Menu Windows 7

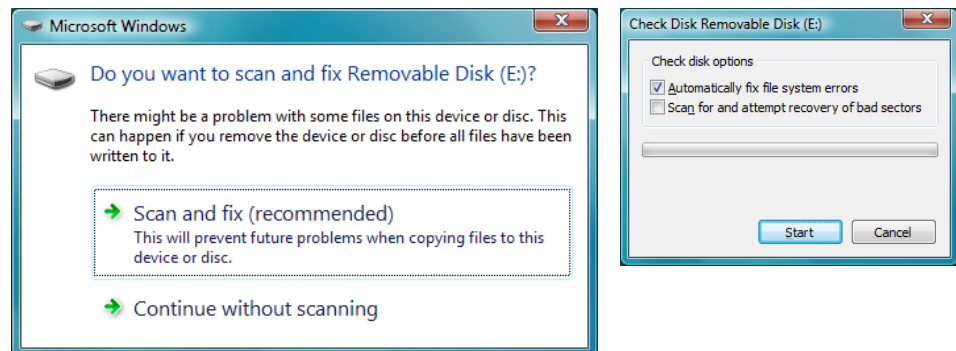
3.1. For software and drivers located on a USB memory stick

3.1.1. Insert the USB memory stick into a USB port.

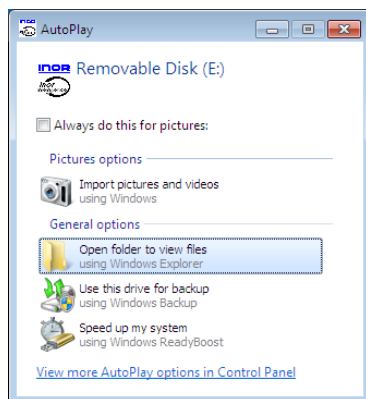
The first time the memory stick is connected to your PC it will be automatically installed. A message will pop up down in the right corner of the screen during installation, just wait.



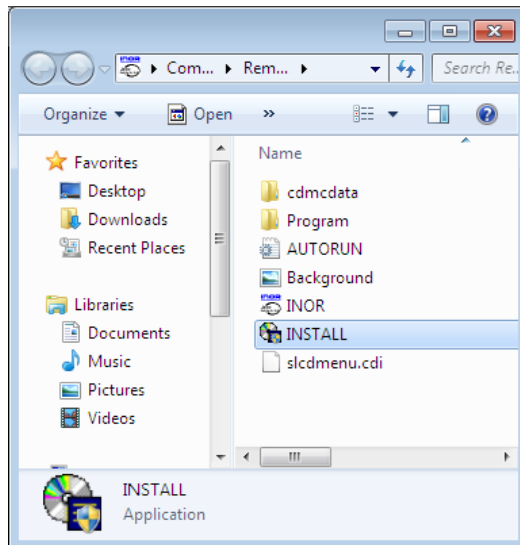
3.1.1.1. If the **Do you want to scan and fix Removable Disk?** message is displayed, choose "Scan and fix (recommended)". Then click [Start]. After scanning, remove the USB memory and connect it again.



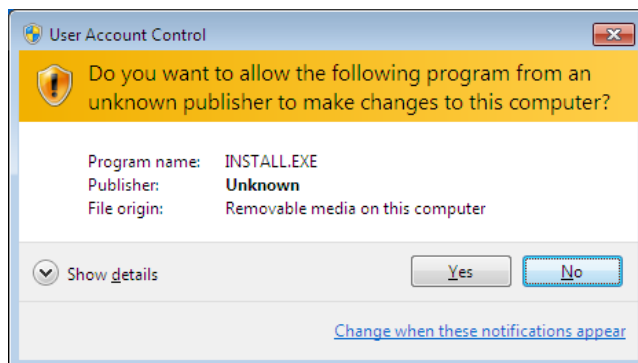
3.1.2. The computer will display a menu of actions to perform. Click on "Open folder to view files".



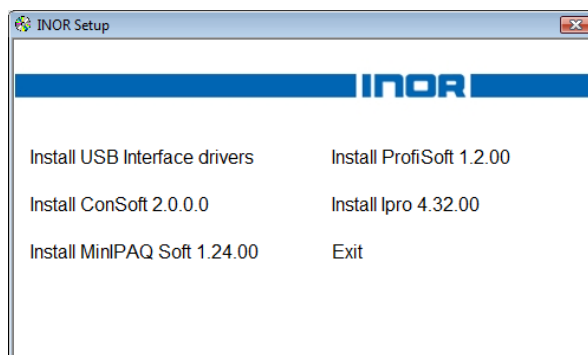
- 3.1.3. The computer will display a folder. Double click on "INSTALL".



- 3.1.4. Depending on your Windows security settings a **User Account Control** dialog box may be displayed. Click on [Yes].

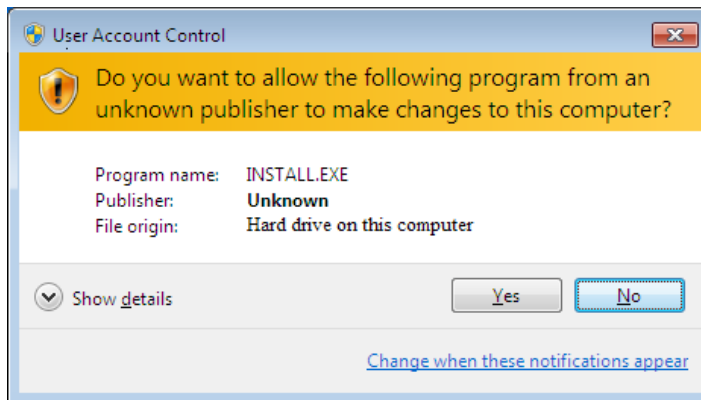


- 3.1.5. The **INOR Setup Menu** is displayed.

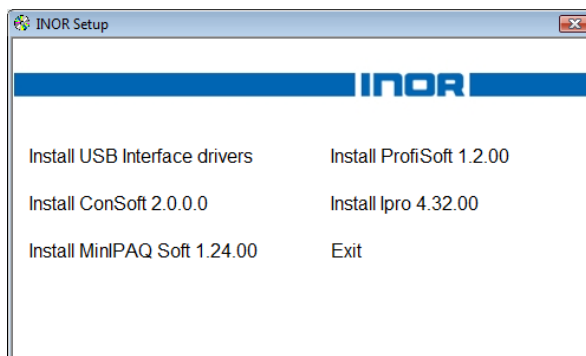


3.2. For software and drivers downloaded from www.inor.com

- 3.2.1. When you are downloading the files from internet you may get the options to [Run] or [Save].
By choosing [Run], the setup process starts once the setup file is downloaded.
If you selected [Save], double click on the downloaded file.
Depending on your Windows security settings you may see a Security Warning box, if so, click on [Run].
- 3.2.2. Depending on your Windows security settings a **User Account Control** dialog Box may be display. Click on “Yes”.



- 3.2.3. The files will begin to extract.
After extracting the files the **INOR Setup Menu** will start as shown.



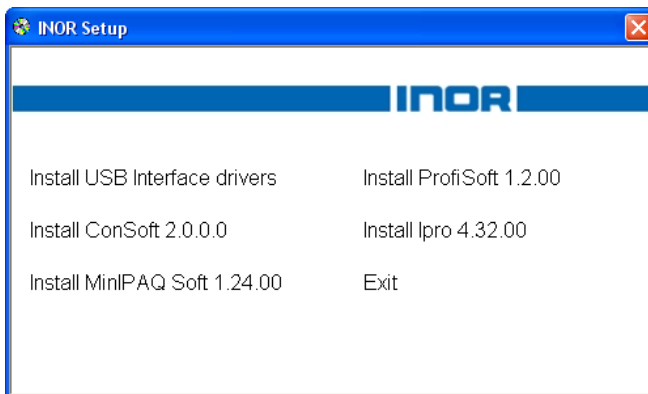
4. Installing drivers for the USB Interface



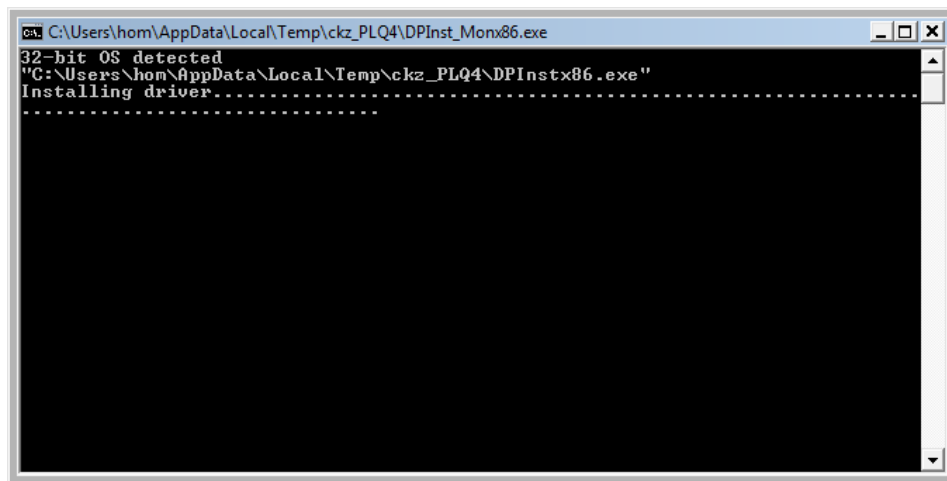
Note! If you are only updating your ConSoft software, skip this chapter. Your old driver installation is still valid!

Make sure your USB interface is not plugged in before driver installation.

4.1. Click on “Install USB Interface drivers” in INOR Setup Menu.

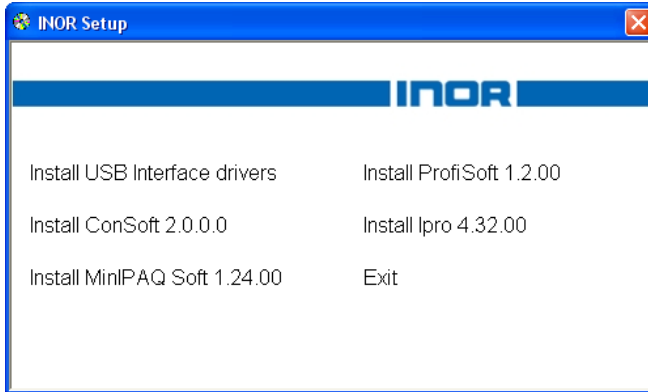


4.1.1. The installation procedure for the drivers will start and a window similar as below will open.



Wait until this automatic procedure ends. It will take a few minutes. Then the window closes and the installation of the interface can continue.

- 4.2. Drivers for INOR USB Interface are now prepared to be installed.
- 4.3. Connect the USB Interface and the installation will complete and be ready to use.
- 4.4. You are back to INOR Setup Menu.



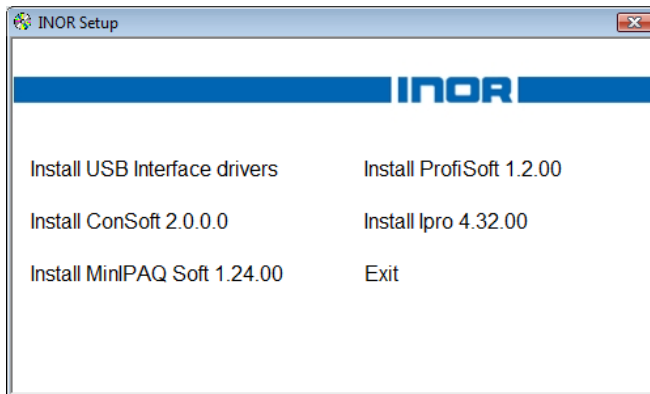
5. Installing configuration software ConSoft



Note! If you are updating your ConSoft software, make sure your USB Interface has firmware 1.2.01 or higher.

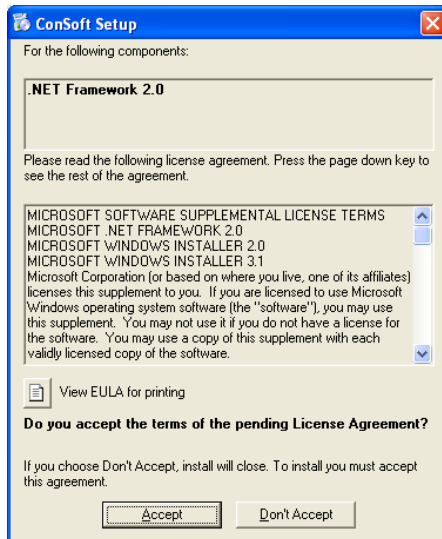
Version control: Connect the USB Interface to a PC, start ConSoft, click "About" or "Help" – "About".

5.1. Click on "Install ConSoft" from INOR Setup Menu.

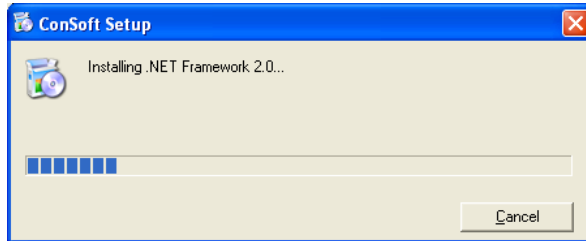


5.1.1. If you don't have Microsoft .NET Framework installed on your computer, a message box displays prompting you to install it. Click on [Accept].

If you already have Microsoft .NET Framework installed on your computer the installation will continue on step 5.2.



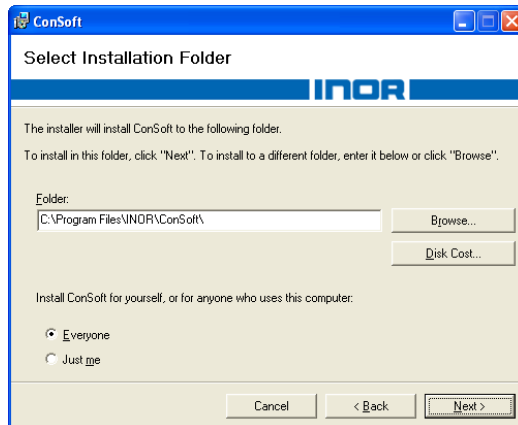
- 5.1.2. Installation of .NET Framework starts.
When the .NET framework install has finished, the ConSoft Setup Wizard will start.



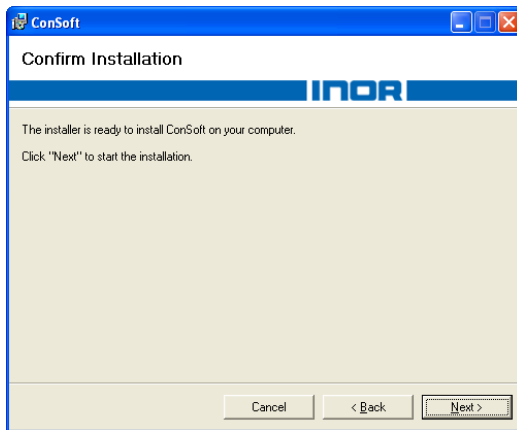
- 5.2. ConSoft Setup Wizard starts.
Click on [Next].



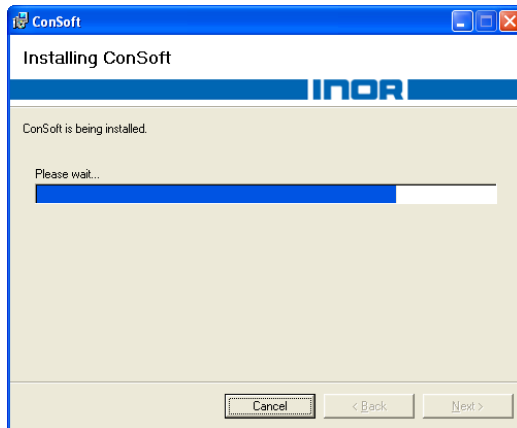
- 5.3. The Wizard continues, click on [Next].



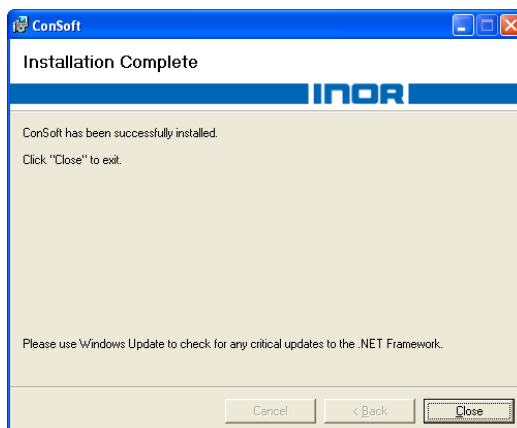
5.4. Confirm installation, click on [Next].



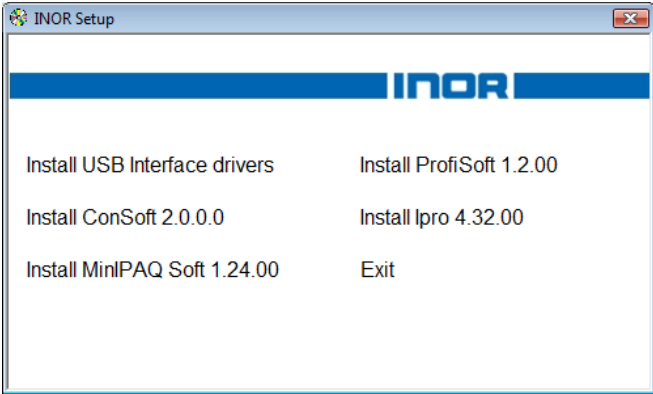
5.5. Installation of ConSoft.



5.6. Installation Complete message will be displayed when the installation is complete. Click on [Close].



5.7. Back to INOR Setup Menu.



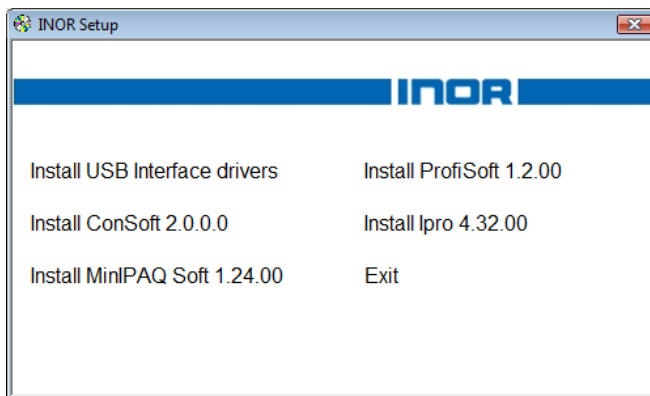
6. Installing external configuration softwares

Installing MinIPAQ Soft, ProfiSoft and IPRO

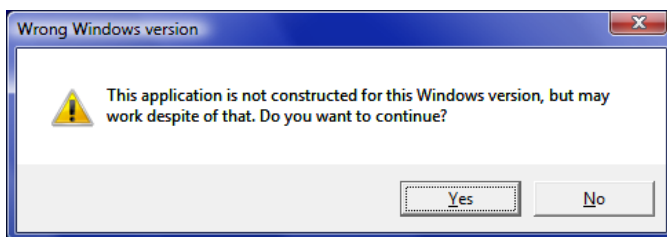
The following softwares *must* be installed for configuring with the USB Interface.

- MinIPAQ Soft 1.24.00 or higher for MinIPAQ transmitters.
- ProfiSoft 1.2.00 or higher for ProfiPAQ transmitters.
- IPRO 4.32.00 or higher for IPAQ transmitters (except IPAQ C/R family).

- 6.1. Click on respective name on INOR Setup Menu and follow the instructions. They must be installed into their default folders during installation.



When installing MinIPAQ Soft, ProfiSoft and IPRO on a Windows Vista or Windows 7 PC the following error will be displayed, click on [Yes] to continue with the installation.



Earlier versions of MinIPAQ Soft, ProfiSoft and IPRO will not be overwritten during installation if they already are installed, and can be used for RS232 serial communication with IPRO-X or IPRO off-line cable.

- 6.2. To end the INOR Setup Menu, click Exit.

7. Troubleshooting

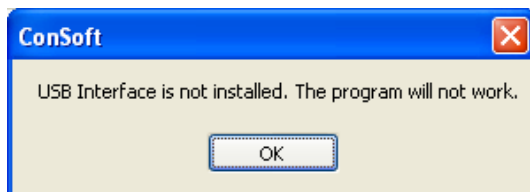
- 7.1. If the INOR Setup Menu does *not* start and displays a menu of actions to perform when inserting the USB memory stick to a USB port (as 1.1.).

⇒ Open **My Computer**. A removable disk with an INOR icon next to it should appear there.

Open the removable disk and run the file INSTALL.EXE as shown below. The **INOR Setup Menu** will start.

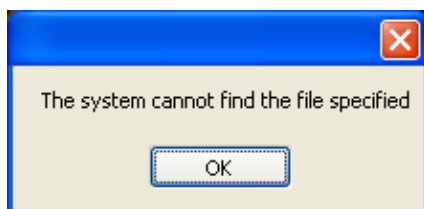


- 7.2. Error “USB Interface is not installed. The program will not work” displays when starting ConSoft.



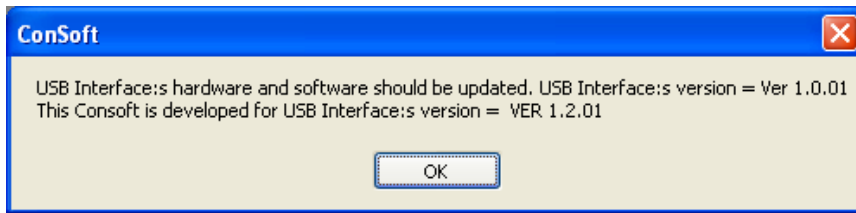
⇒ Install drivers for the USB Interface.

- 7.3. Error “The system cannot find the file specified” displays when trying to configure a transmitter from ConSoft.



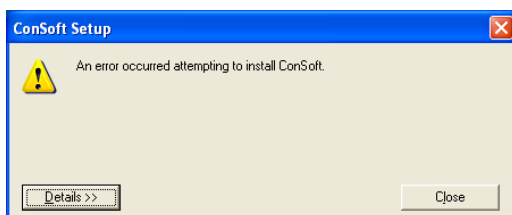
⇒ Install external configuring software (see chapter 6).

- 7.4. Error message saying the USB Interface:s hardware and/or software should be updated appears in ConSoft.



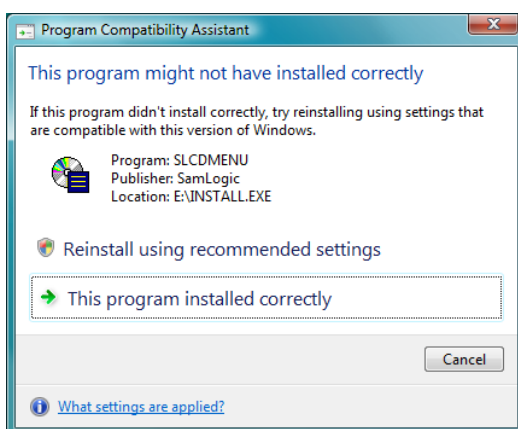
⇒ Contact INOR for update your USB Interface.

- 7.5. Error “An error occurred attempting to install ConSoft.” displays during installation of ConSoft.



⇒ A newer version of ConSoft is already installed on the computer. If you still want to install the older version, uninstall ConSoft through Control Panel – Add or Remove Programs

- 7.6. Depending on Windows security settings you may see the “This program might not have installed correctly” message when exit from the Inor Setup Menu in Windows Vista or Windows 7.



⇒ You can safely ignore this and close the window by choosing the option “This program installed correctly”



INOR

www.inor.com, www.inor.se

<p>Inor Process AB PO Box 9125 SE-200 39 MALMÖ Sweden Phone: +46-(0)40-31 25 60 Fax: +46-(0)40-31 25 70 E-mail: support@inor.se</p>	<p>Inor Transmitter Oy Unikkotie 13 FI-01300 VANTAA Finland Phone: +358-(0)10-4217900 Fax: +358-(0)10-4217901 E-mail: jari.stadig@inor.fi</p>	<p>Inor Transmitter GmbH Am Bocksborn 5 63571 Gelnhausen Germany Phone: +49-(0)6051-14807 Fax: +49-(0)6051-14806 E-mail: support.de@inor.se</p>
--	--	---