



12-CHANNEL TEMPERATURE RECORDER WITH EXCEL-FORMATTED DATA LOGGING SD CARD

USER'S MANUAL



DT4208SD

Please read this manual carefully and thoroughly before using this product.

TABLE OF CONTENTS

Introduction	3
Key Features	4
What's in the Case	4
Product Overview	5
Setup Instructions	6 – 8
Adjusting Thermcouple Offsets	8
Operating Instructions	9 – 12
Normal Operation	9
Holding and Storing Measurements	10
Automatic vs. Manual Data Logging	10 – 11
Transferring Data from the SD Card to a Computer	12
Specifications	13
Maintenance & Troubleshooting Tips	14
Optional Accessories	14
Warranty Information	15
Return for Repair Policy	15

INTRODUCTION

Thank you for purchasing General Tools & Instruments' DT4208SD 12-Channel Temperature Recorder with Excel-formatted Data Logging SD Card. Please read this user's manual carefully and thoroughly before using the instrument.

The DT4208SD is a general-purpose handheld instrument that can measure up to 12 channels of temperature with 0.4% accuracy using any of six different types of thermocouple. Up to eight channels can be displayed at a time. The instrument also can be configured to automatically record up to 12 channels during the same period every day—a function called loop data recording.

Although thermocouples are not as accurate as other types of thermometers, they more than make up for this shortcoming with an extended measurement range. For example, the DT4208SD can measure and read out temperatures from -148° to 2372°F (-100° to 1300°C) using "K" type thermocouples, and temperatures from -148° to 2102°F (-100° to 1100°C) using "J" type thermocouples. "R" and "S" type thermocouples have an even higher upper limit. The two "K" type thermocouples included with the instrument have a measurement range of -50° to 500°F (-45° to 260°F).

These very wide ranges, plus a fast response time and a low price tag, suit thermocouple thermometers for a variety of commercial and industrial tasks requiring measurement of very high and low temperatures. Examples include applications in the food and chemical processing industries, HVAC (heating, ventilation and air-conditioning), power generation, and paper production.

Because it is microprocessor-based, the DT4208SD can make full use of the portability, reliability and large storage capacities that SD memory cards offer. Measurements can be made automatically at any sampling rate between one second and one hour. After time-stamping and storing the measurements on an SD card plugged into the instrument (a process called data logging), the user can remove the card and plug it into to a laptop or desktop computer either directly or through an SD card reader. The data logs are stored on the card as files with the .xls extension, which can be opened by Microsoft's Excel application.

The DT4208SD has a backlit 3.9 in. diagonal display and is powered by eight "AA" batteries or an optional 9-VDC AC adapter.

KEY FEATURES

- Twelve independent temperature measurement channels
- Displays up to eight channels at a time; one push of a button switches to Channels 9 through 12
- Works with and automatically temperature-compensates for six popular thermocouple types: K, J, T, E, S and R
- Combining thermocouple types extends potential measurement range to -148° to 3092°F (-100° to 1700°C)
- Can automatically log up to 12 channels of data every day during same period (loop data recording)
- Big (3.9 in. diagonal) front-panel green backlit LCD is easy to read
- Displays maximum and minimum readings and holds any reading
- Automatically logs measurements at sampling time settable from one second to one hour
- Also supports manual data logging and changing of SD card storage location
- Outputs Excel-compatible data logs
- Accepts SD memory cards of up to 16 GB capacity
- Auto power off function that can be disabled to enable long-term data logging
- Powered by eight “AA” batteries or optional 9V AC/DC adapter

WHAT'S IN THE CASE

The DT4208SD comes fully assembled in a carrying case along with a 2 GB SD memory card, two general-purpose “K” type thermocouples (General P/N TPK500) and this user’s manual.

Optional accessories available from General Tools & Instruments include:

- Additional “K” type thermocouples of various diameters, types and measurement ranges
- A 9VDC adapter for a 110V power supply

See the Optional Accessories section of this manual for more details.

PRODUCT OVERVIEW

Figure 1 shows all of the controls and indicators on the front, right side, back and top of the DT4208SD. Familiarize yourself with the positions and functions of these controls, indicators and connectors before moving on to the Setup Instructions.

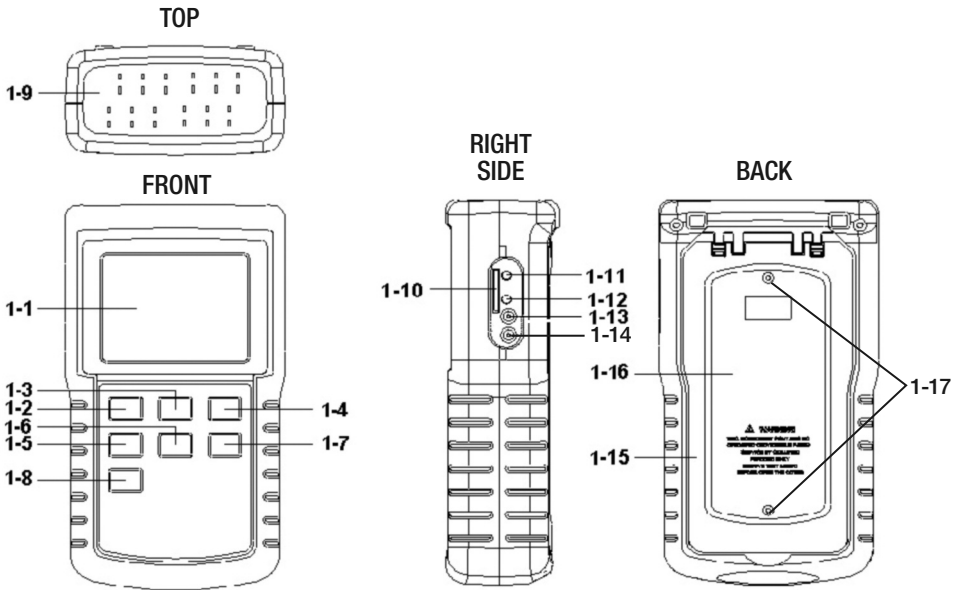


Fig. 1. The DT4208SD's controls and indicators and other physical features

- | | |
|---------------------------------------|---|
| 1-1 LCD | 1-10 SD CARD socket |
| 1-2 POWER/ESC button | 1-11 RS232 output jack |
| 1-3 HOLD/NEXT button | 1-12 RESET button |
| 1-4 REC/ENTER button | 1-13 DC9V jack |
| 1-5 TYPE ▲ button | 1-14 Housing penetration and rubber plug
(reserved for future use) |
| 1-6 PAGE ▼ button | 1-15 Flip-up stand |
| 1-7 LOGGER button | 1-16 Battery compartment cover |
| 1-8 SET button | 1-17 Battery compartment cover screws |
| 1-9 Thermocouple jacks T1 through T12 | |

SETUP INSTRUCTIONS

1. Choose the power source. Before using the DT4208SD, make sure it is powered by fresh batteries or an optional 9VDC AC adapter plugged into the **DC9V** jack on its right side (callout 1-13).

To remove the battery compartment cover (callout 1-16), remove the two screws (callout 1-17) holding it in place. Then install eight “AA” batteries in the correct orientation, using the polarity marks on the inside of the compartment as a guide. Replace the cover and secure it by tightening the two screws.

2. Install an SD card. To prepare for setup, also install the supplied 2 GB SD card or another card of 1 GB to 16 GB capacity in the socket on the right side of the instrument (callout 1-10). When installing the card, make sure its gold contacts are facing the back of the instrument and push the card into the socket until you hear a click. To remove the card, push it in until you hear a click and the card pops out.

Now power on the instrument by pressing the **POWER/ESC** button (callout 1-2) to generate a short beep. (To power off the DT4208SD, press the **POWER/ESC** button and hold it until the instrument responds with a long beep.)

When the temperature recorder powers on, a series of transient startup screens will briefly appear. Once the display has stabilized, perform the following eight setup steps in the order presented.

3. Set the date and time. Press the **SET** button (callout 1-8) and hold it for at least five seconds, until the word “dAtE” appears flashing on the top line of the left column of the display.

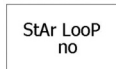
Quickly (within three seconds), press the **REC/ENTER** button. Set the current year by pressing the **TYPE ▲** or **PAGE ▼** button repeatedly until the correct value appears flashing on the top line of the left column. Quickly (within three seconds), press the **REC/ENTER** button to store the setting. The next screen that appears will show the value “01” flashing on the second line. Use the **TYPE ▲** or **PAGE ▼** button to navigate to the current month and press the **REC/ENTER** button to store the setting. When the value “01” begins flashing on the third line, again use the **TYPE ▲** or **PAGE ▼** button to navigate to the current day and press the **REC/ENTER** button to store the setting.

(If you press buttons too slowly in setup mode, the screen will revert to the normal, real-time measurement display. To return to the first step in the setup sequence, press and hold the **SET** button again. To move ahead to the next field in the sequence or to the next parameter, press the **HOLD/NEXT** button.)

Once you have set the date, the display will prompt you to set the hour, minute and second of the current time, in 24-hour format. The three values appear on the top three lines in the right column of the Date/Time Setting screen. To set each value, again use the **TYPE ▲** or **PAGE ▼** buttons to navigate to the correct values, followed by the **REC/ENTER** button to store the setting.

4. Set the start and stop times for “loop data recording”—logging up to 12 channels of temperature information during the same period (for example, 14:15 to 15:30) every day. Once you have set the date and time, the display will show the flashing term “Loop” in the second row of the left column. Press the **REC/ENTER** button and then—with “00” flashing under the term “StAr” in the left column— use the **TYPE ▲** and **PAGE ▼** buttons to set the first of the four values that define the loop: the starting hour. Press the **REC/ENTER** button to store your selection. Then use the **TYPE ▲** and **PAGE ▼** buttons with “00” flashing below the term “t” in the right column to set the loop’s starting minute. Again press the **REC/ENTER** button to store your selection. Repeat this sequence twice more to set and store the loop’s ending hour and minutes values.

Once you have entered the fourth value—the loop’s ending minute—the following screen will appear:



StAr Loop
no

To enable recording of data during the specified loop duration, press either the **TYPE ▲** or **PAGE ▼** button to change the “no” to a “yES” and then press the **REC/ENTER** button to store the selection. To disable recording, press the **REC/ENTER** button without changing the “no” to a “yES”.

5. Choose a decimal point or comma to represent the decimal division between integers and fractions (for example, American-style 20.88 vs. European-style 20,88). Once you have set the start and stop times of loop data recording and enabled or disabled the function, the display will show the term “dEC” in the third row of the left column. Press the **REC/ENTER** button. This will cause the term “dEC” to appear in the lower right corner below the term “USA”. Use the **TYPE ▲** or **PAGE ▼** button to make “USA” or “Euro” (as desired) appear above “dEC” and then press the **REC/ENTER** button to store the selection as the default.

6. Enable or disable auto power off (APO). Once the format of decimal point divisions has been set and stored, the display will show the term “PoFF” in the bottom row of the left column. Press the **REC/ENTER** button and then press the **TYPE ▲** or **PAGE ▼** button until the desired automatic power off management scheme (“yES” for enable; “no” for disable) is displayed. Press the **REC/ENTER** button to store the selection. If enabled, the APO function shuts off the DT4208SD if no front-panel buttons are pressed during any ten-minute period.

7. Enable or disable the beeper. Once the APO function has been enabled or disabled, the display will show the term “bEEP” in the top row of the right column. Press the **REC/ENTER** button and then press the **TYPE ▲** or **PAGE ▼** button until the desired setting (“yES” or “no”) is displayed. Finally, press the **REC/ENTER** button to store the selection as the default.

8. Select the temperature unit. Once the beeper has been enabled or disabled, the display will show the term “t-CF” in the second row of the right column. Press the **REC/ENTER** button and then press the **TYPE ▲** or **PAGE ▼** button until the unit you prefer (“F” for Fahrenheit, “C” for Celsius) is displayed. Then press the **REC/ENTER** button to store the selection as the default.

9. Set the data logging sampling time. Once the default temperature unit has been selected and stored, the display will show the term “SP-t” in the third row of the right column. Press the **REC/ENTER** button and then press the **TYPE ▲** or **PAGE ▼** button to decrease or increase the value until the desired sampling time appears above “SP-t”. The options are 0, 1, 2, 5, 10, 30, 60, 120, 300, 600, 1800 and 3600 seconds (0 seconds to 1 hour). Then press the **REC/ENTER** button to store the selection as the default.

10. Format the SD card. Once the sampling time has been set and stored, the term “Sd-F” will appear in the bottom row of the right column. Press the **REC/ENTER** button.

Pressing the **REC/ENTER** button will cause the word “no” to appear over the term “Sd-F”. Press the **TYPE ▲** or **PAGE ▼** button to toggle between “no” and “yES”. Choose “yES” whenever a new SD card is being used, or when a used card is being repurposed (from use with another SD card instrument or a camera, for example) and all data on it is to be erased. Choose “no” to preserve any data on a card previously used with this instrument. Press the **REC/ENTER** button to make a selection.

If you choose “yES”, after you press the **REC/ENTER** button the instrument will prompt you to confirm that decision by displaying the term “Ent” below “yES” and sounding three beeps (if the beeper is enabled). To confirm that you want to begin the erasure/formatting procedure, press the **REC/ENTER** button. “Ent” will then flash several times and the instrument will sound another three beeps to confirm that the SD card has been erased and formatted.

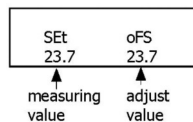
Once the SD card has been formatted (or not), the display will return to flashing the first of the eight steps in the setup sequence—setting the current date and time. To re-enter the setup sequence in order to change one or more settings, press the **REC/ENTER** button. If you are satisfied with the existing settings, press the **POWER/ESC** button to exit setup mode and enter normal operating mode.

ADJUSTING THERMOCOUPLE OFFSETS

To maximize the accuracy of measurements, General strongly recommends that you compensate for (offset) the small measurement error peculiar to each thermocouple used with the instrument.

To adjust the offset of a thermocouple, press the **TYPE ▲** button until its type appears on the top line of the display. Then plug the thermocouple into the T1 jack on the top of the thermometer.

Press the **LOGGER** button (which has the term “Offset” stenciled above it), hold it for at least three seconds, and then release the button. The screen shown at right will appear:



Next, use the **TYPE ▲** or **PAGE ▼** button to adjust the value under “oFS” to match the value under “SEt”. Then press the **REC/ENTER** button to store the offset adjustment and return the instrument to measurement mode. Repeat the procedure for each thermocouple to be used.

OPERATING INSTRUCTIONS

NORMAL OPERATION

1. To prepare to make measurements, power on the DT4208SD and make sure an SD card is firmly seated in the socket on the bottom of the instrument.

By default, the DT4208SD uses Celsius units for temperature measurements. If you wish to make Fahrenheit units the default, press the **SET** button to enter setup mode. Using the **HOLD/NEXT** button, skip ahead to Step 8 of the Setup Instructions and perform it.

2. To use “K” type thermocouples to measure up to 12 channels of temperature, plug one to 12 of them (two are supplied, others are available for purchase from General) into the jacks (callout 1-9 of Fig. 1) on the top of the temperature recorder. Make sure jack T1 is occupied. Because “K” is the instrument’s default thermocouple type, plugging in up to eight “K” type thermocouples will instantly produce up to eight display readings. Any of the eight channels that are not used will show the overrange reading “- - - -”.

To show the other four of the 12 channels, press the **PAGE ▼** button once. To return the display to Channels T1 through T8, press the **PAGE ▼** button again.

3. To use “J”, “T”, “E”, “R” or “S” type thermocouples to measure up to 12 channels of temperature, first press the **TYPE ▲** button as many times as necessary until the letter of the thermocouple type you are using appears on the top line of the display. Then plug one to 12 of the optional accessories into the jacks on the top of the thermometer. As with “K” type thermocouples, display readings are instantaneous. Use the **PAGE ▼** button to toggle between displaying Channels T1 through T8, or Channels 9 through 12, as with “K” type thermocouples.

Whenever the thermometer is in measurement mode, you can turn off the backlight (which is on by default) by briefly pressing (but not holding) the **POWER/ESC** button, which has a backlight icon stenciled above it. To reactivate the backlight, briefly press the button again.

Whenever the instrument is in measurement mode, you also can check the current date and time by briefly pressing the **SET** button (which has the words “Time check” stenciled below it). Doing so causes the three settings year, month + day, and hour + minutes to appear briefly and in that order at the lower left of the display.

HOLDING AND STORING MEASUREMENTS

- 1. To hold a measured value**, press the **HOLD/NEXT** button during the measurement. Doing so will cause the word “HOLD” to appear at the top of the display. Pressing the **HOLD/NEXT** button again releases the hold.
- 2. To record and recall readings**, press the **REC/ENTER** button while making measurements. This will make the term “REC” appear at the top of the display. Pressing the **REC/ENTER** button again, briefly, will make the term “MAX” appear to the right of “REC” and switch the display to the maximum value stored in memory during the current recording session. Pressing the **REC/ENTER** button again, briefly, will make the term “MIN” appear to the right of “REC” and switch the display to the minimum value stored during the current session.
- 3. To exit recording mode**, press the **REC/ENTER** button and hold it for at least three seconds, until the term “REC” disappears from the top line of the display. The display will then revert to showing real-time readings.

AUTOMATIC VS. MANUAL DATA LOGGING

The DT4208SD can automatically log data at a user-selected sampling period from 1 second to 3,600 seconds (one hour). To view the sampling time that the instrument has been set up to use, press the **LOGGER** button (which has the words “Sampling time check” stenciled below it) once. The lower left corner of the display will briefly show the term “SP-t”, followed by the currently programmed sampling time in seconds. To change the sampling time, enter setup mode and perform Step 9 of the Setup Instructions.

Before entering data logging mode, remember to disable the meter’s Auto Power Off function. To do so, enter Setup mode (as explained in the Setup Instructions on p. 6) and select “no” during Step 6.

Also be sure that the meter either is running on fresh batteries or is being powered by AC through a 9VDC adapter.

- 1. To start automatic data logging**, press the **REC/ENTER** button once. The top line of the display will then show the term “REC”. Pressing the **LOGGER** button at this point will make “REC” flash and add the flashing term “DATA LOGGER” at the bottom of the display. This indicates that the instrument is sampling measurements at the programmed rate and storing the readings and their time stamps in memory.
- 2. To pause automatic data logging**, press the **LOGGER** button once; this will make the flashing term “LOGGER” disappear from the bottom of the display and change the term “REC” from flashing to constant. Pressing the **LOGGER** button again resumes automatic data logging.

- 3. To end automatic data logging**, first press the **LOGGER** button to pause data logging. Then press the **REC/ENTER** button and hold it for at least two seconds. This will cause “REC” to disappear.
- 4. To log data manually**, set the sampling time to zero using Step 9 of the Setup Instructions on p. 8. Then press the **REC/ENTER** button once. The display will show the term “REC” on the top line and a flashing letter “P” and a number from 1 to 99 on the bottom line. The number indicates the position on the SD card that will be used to store manually logged data. In manual data logging mode, this position can be changed.
- 5. To change the storage location of manually logged data**, press the **TYPE ▼** button once; this will cause the “P” to disappear from the left side of the display and the value on its line to begin flashing. Once the flashing begins, you can use the **TYPE ▲** and **PAGE ▼** buttons to change the flashing value to any number between 1 and 99. Once you have chosen the storage location, press the **REC/ENTER** button to save the setting. This will cause the value to stop flashing and the “P” to return.
- 6. To end manual data logging**, press the **REC/ENTER** button and hold it for at least three seconds. This action will cause “REC” to disappear from the top line of the display.
- 7. To execute the loop data recording function** (if the function was enabled during setup) press the **REC/ENTER** button while the instrument is in measurement mode. Doing so will make the term “REC” appear at the top of the display and prepare the instrument to log data during the specified daily period.
- 8. To pause loop data recording** during the specified period, press the **LOGGER** button once. This will make the term “REC” stop flashing. Pressing the **LOGGER** button again will resume loop data recording.
- 9. To end loop data recording**, press the **REC/ENTER** button and hold it for at least three seconds. This will cause “REC” to disappear from the display and end loop data recording.

TRANSFERRING DATA FROM THE SD CARD TO A COMPUTER

After automatic or manual data logging of measurements, or loop data recording, remove the SD card from the instrument and plug it into your computer either directly (if it has an SD card slot) or through an SD card reader.

Because the files containing time-stamped data logs have the file extension .xls, they open in Microsoft's Excel application. Figures 2 and 3 show two kinds of Excel presentations: a data-only screen and a graphics-only screen.

Place	Date	Time	T1 Unit	T2 Unit	T3 Unit	T4 Unit	T5 Unit	T6 Unit	T7 Unit	T8 Unit	T9 Unit	T10 Unit	T11 Unit	T12 Unit
1	2009/11/06	17:59:35	24.6 T1kTemp C	24.6 T2kTemp C	24.7 T3kTemp C	24.6 T4kTemp C	24.6 T5kTemp C	24.6 T6kTemp C	24.7 T7kTemp C	24.5 T8kTemp C	24.7 T9kTemp C	24.3 T10kTemp C	24.9 T11kTemp C	24.5 T12kTemp C
2	2009/11/06	17:59:37	24.6 T1kTemp C	24.6 T2kTemp C	24.7 T3kTemp C	24.6 T4kTemp C	24.6 T5kTemp C	24.6 T6kTemp C	24.7 T7kTemp C	24.5 T8kTemp C	24.7 T9kTemp C	24.3 T10kTemp C	24.4 T11kTemp C	24.5 T12kTemp C
3	2009/11/06	17:59:39	24.6 T1kTemp C	24.6 T2kTemp C	32.9 T3kTemp C	24.6 T4kTemp C	24.6 T5kTemp C	24.6 T6kTemp C	29.8 T7kTemp C	24.5 T8kTemp C	24.7 T9kTemp C	24.3 T10kTemp C	31.6 T11kTemp C	24.5 T12kTemp C
4	2009/11/06	17:59:41	25.7 T1kTemp C	24.6 T2kTemp C	29.6 T3kTemp C	24.6 T4kTemp C	24.6 T5kTemp C	24.6 T6kTemp C	26.6 T7kTemp C	24.5 T8kTemp C	24.7 T9kTemp C	24.3 T10kTemp C	30 T11kTemp C	24.5 T12kTemp C
5	2009/11/06	17:59:43	30.2 T1kTemp C	24.7 T2kTemp C	31 T3kTemp C	24.6 T4kTemp C	31.4 T5kTemp C	24.6 T6kTemp C	26.6 T7kTemp C	24.5 T8kTemp C	24.7 T9kTemp C	24.3 T10kTemp C	31.4 T11kTemp C	24.5 T12kTemp C
6	2009/11/06	17:59:45	27.5 T1kTemp C	24.8 T2kTemp C	32.1 T3kTemp C	24.7 T4kTemp C	31.4 T5kTemp C	24.6 T6kTemp C	26.6 T7kTemp C	24.5 T8kTemp C	24.8 T9kTemp C	24.3 T10kTemp C	31.4 T11kTemp C	24.6 T12kTemp C
7	2009/11/06	17:59:47	26.2 T1kTemp C	24.8 T2kTemp C	32.1 T3kTemp C	24.7 T4kTemp C	33.7 T5kTemp C	24.7 T6kTemp C	26 T7kTemp C	24.5 T8kTemp C	24.9 T9kTemp C	24.3 T10kTemp C	32.1 T11kTemp C	24.6 T12kTemp C
8	2009/11/06	17:59:49	25.5 T1kTemp C	24.9 T2kTemp C	30.1 T3kTemp C	24.7 T4kTemp C	30.5 T5kTemp C	24.7 T6kTemp C	26 T7kTemp C	24.5 T8kTemp C	25.1 T9kTemp C	24.3 T10kTemp C	30.9 T11kTemp C	24.6 T12kTemp C
9	2009/11/06	17:59:51	25.5 T1kTemp C	24.9 T2kTemp C	28.3 T3kTemp C	24.7 T4kTemp C	28.1 T5kTemp C	24.8 T6kTemp C	26 T7kTemp C	24.5 T8kTemp C	25.3 T9kTemp C	24.3 T10kTemp C	28.2 T11kTemp C	24.7 T12kTemp C
10	2009/11/06	17:59:53	25.5 T1kTemp C	24.9 T2kTemp C	27.4 T3kTemp C	24.7 T4kTemp C	26.9 T5kTemp C	24.8 T6kTemp C	26 T7kTemp C	24.5 T8kTemp C	25.4 T9kTemp C	24.3 T10kTemp C	28.2 T11kTemp C	24.8 T12kTemp C
11	2009/11/06	17:59:55	25.4 T1kTemp C	24.8 T2kTemp C	27.4 T3kTemp C	24.8 T4kTemp C	26 T5kTemp C	24.8 T6kTemp C	25.4 T7kTemp C	24.6 T8kTemp C	25.4 T9kTemp C	24.3 T10kTemp C	27.3 T11kTemp C	24.8 T12kTemp C
12	2009/11/06	17:59:57	25.3 T1kTemp C	24.8 T2kTemp C	26.5 T3kTemp C	24.8 T4kTemp C	26 T5kTemp C	24.8 T6kTemp C	25.4 T7kTemp C	24.6 T8kTemp C	25.4 T9kTemp C	24.3 T10kTemp C	27.3 T11kTemp C	24.8 T12kTemp C
13	2009/11/06	17:59:59	25.2 T1kTemp C	24.8 T2kTemp C	26.5 T3kTemp C	24.8 T4kTemp C	26 T5kTemp C	24.8 T6kTemp C	25.4 T7kTemp C	24.6 T8kTemp C	25.3 T9kTemp C	24.3 T10kTemp C	26.6 T11kTemp C	24.9 T12kTemp C
14	2009/11/06	18:00:01	25.1 T1kTemp C	24.8 T2kTemp C	25.9 T3kTemp C	24.8 T4kTemp C	25.4 T5kTemp C	24.8 T6kTemp C	25.3 T7kTemp C	24.6 T8kTemp C	25.3 T9kTemp C	24.3 T10kTemp C	26.6 T11kTemp C	24.8 T12kTemp C
15	2009/11/06	18:00:03	25 T1kTemp C	24.8 T2kTemp C	25.9 T3kTemp C	24.8 T4kTemp C	25.4 T5kTemp C	24.8 T6kTemp C	25.2 T7kTemp C	24.6 T8kTemp C	25.2 T9kTemp C	24.3 T10kTemp C	26.6 T11kTemp C	24.8 T12kTemp C
16	2009/11/06	18:00:05	24.9 T1kTemp C	24.8 T2kTemp C	25.9 T3kTemp C	24.8 T4kTemp C	25.4 T5kTemp C	24.8 T6kTemp C	25.2 T7kTemp C	24.6 T8kTemp C	25.2 T9kTemp C	24.3 T10kTemp C	25.9 T11kTemp C	24.8 T12kTemp C
17	2009/11/06	18:00:07	24.9 T1kTemp C	24.7 T2kTemp C	25.3 T3kTemp C	24.8 T4kTemp C	25.3 T5kTemp C	24.8 T6kTemp C	25 T7kTemp C	24.6 T8kTemp C	25.2 T9kTemp C	24.3 T10kTemp C	25.9 T11kTemp C	24.8 T12kTemp C
18	2009/11/06	18:00:09	24.9 T1kTemp C	24.7 T2kTemp C	27.8 T3kTemp C	24.8 T4kTemp C	25.2 T5kTemp C	24.8 T6kTemp C	25 T7kTemp C	24.6 T8kTemp C	25.1 T9kTemp C	24.3 T10kTemp C	29.2 T11kTemp C	24.8 T12kTemp C
19	2009/11/06	18:00:11	24.9 T1kTemp C	24.8 T2kTemp C	27.8 T3kTemp C	24.8 T4kTemp C	31 T5kTemp C	24.8 T6kTemp C	25 T7kTemp C	24.6 T8kTemp C	25.2 T9kTemp C	24.3 T10kTemp C	29.2 T11kTemp C	24.8 T12kTemp C
20	2009/11/06	18:00:13	24.9 T1kTemp C	24.9 T2kTemp C	27.8 T3kTemp C	24.8 T4kTemp C	26.5 T5kTemp C	24.8 T6kTemp C	25.1 T7kTemp C	24.6 T8kTemp C	25.2 T9kTemp C	24.3 T10kTemp C	29.2 T11kTemp C	24.8 T12kTemp C
21	2009/11/06	18:00:15	25.1 T1kTemp C	25 T2kTemp C	27.9 T3kTemp C	24.8 T4kTemp C	26.5 T5kTemp C	24.9 T6kTemp C	26.6 T7kTemp C	24.7 T8kTemp C	25.2 T9kTemp C	24.3 T10kTemp C	30.2 T11kTemp C	24.8 T12kTemp C
22	2009/11/06	18:00:17	25.1 T1kTemp C	25.1 T2kTemp C	28 T3kTemp C	24.9 T4kTemp C	26.5 T5kTemp C	24.9 T6kTemp C	26.6 T7kTemp C	24.9 T8kTemp C	25.3 T9kTemp C	24.3 T10kTemp C	32.7 T11kTemp C	24.9 T12kTemp C
23	2009/11/06	18:00:19	25.2 T1kTemp C	25.1 T2kTemp C	30.2 T3kTemp C	24.9 T4kTemp C	26.5 T5kTemp C	25 T6kTemp C	25.8 T7kTemp C	25 T8kTemp C	25.4 T9kTemp C	24.3 T10kTemp C	31 T11kTemp C	25.2 T12kTemp C
24	2009/11/06	18:00:21	26.2 T1kTemp C	25.1 T2kTemp C	29.1 T3kTemp C	24.9 T4kTemp C	26.2 T5kTemp C	25.1 T6kTemp C	28.6 T7kTemp C	25.2 T8kTemp C	25.4 T9kTemp C	24.3 T10kTemp C	31 T11kTemp C	25.4 T12kTemp C
25	2009/11/06	18:00:23	26.2 T1kTemp C	25.2 T2kTemp C	28.4 T3kTemp C	25 T4kTemp C	26.1 T5kTemp C	25.4 T6kTemp C	26.5 T7kTemp C	25.3 T8kTemp C	25.4 T9kTemp C	24.3 T10kTemp C	29.4 T11kTemp C	25.5 T12kTemp C

Fig. 2. Typical Excel data-only screen

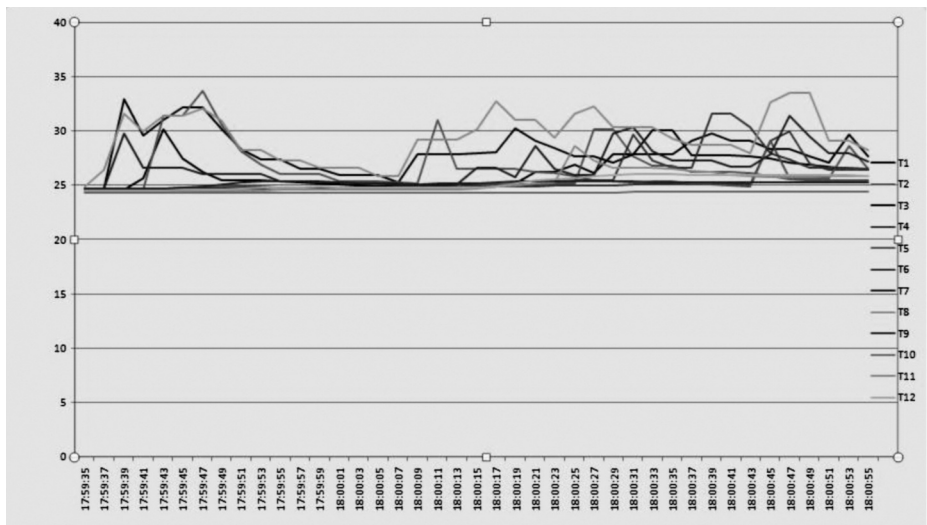



Fig. 3. Typical Excel graphics-only screen

SPECIFICATIONS

Display type	LCD with green backlight
Display size	3.23 x 2.40 in. (82 x 61mm)
Parameter measured	Temperature (in °F or °C)
Measurement range	With “K” type thermocouples: -148° to 2372°F (-100° to 1300°C); two included TPK500 probes have measurement range of -50° to 500°F (-45° to 260°C) With “J” type: -148° to 2102°F (-100° to 1150°C) With “T” type: -148° to 752°F (-100° to 400°C) With “E” type: -148° to 1652°F (-100° to 900°C) With “R” type: 32° to 3092°F (0° to 1700°C) With “S” type: 32° to 2732°F (0° to 1500°C)
Measurement accuracy	With “K”, “J”, “T” and “E” type thermocouples: ± (0.4% of reading + 2.0°F max) With “R” and “S” types: ±(0.5% of reading + 5°F)
Measurement resolution	With “K”, “J”, “T” and “E” type thermocouples: 0.1° (F or C) below 1000°F, 1° (F or C) above 1000°F With “R” and “S” types: 1° (F or C)
Sampling time options	0, 1, 2, 5, 10, 30, 60, 120, 300, 600, 1800 or 3600 seconds
Settable parameters	Date, time, decimal point or comma decimal division, auto power off, beep sound, loop data recording enable/disable and start/stop times, temperature unit, sampling time, thermocouple type and offset
Storable readings	Maximum, minimum
SD card capacity	1 GB to 16 GB
Operating temperature	32° to 122°F (0° to 50°C)
Operating relative humidity	0 to 85%
Power source	8 “AA” batteries or optional 9-VDC AC adapter
Power consumption	7.5 mADC (normal operation, with backlight off and SD card not saving data); 25 mADC with backlight off and card saving data; 36 mADC with backlight on and card saving data
Dimensions	8.86 x 4.92 x 2.52 in. (225 x 125 x 64mm)
Weight	1.84 lb. (827g)

MAINTENANCE & TROUBLESHOOTING TIPS

Keep your probes and thermocouples clean.

When the icon  appears in the upper left corner of the display, it's time to replace the eight "AA" batteries that power the instrument (although measurements will remain valid for several hours after the low-battery indicator first appears). Replacing the batteries requires removing the two screws that hold the battery compartment cover in place, as explained in Step 1 of the Setup Instructions on p. 6. After inserting fresh batteries in the correct orientation, replace the cover and tighten the screws to secure it.

If the meter "freezes" (like a computer) and buttons become unresponsive, try resetting the instrument by pushing the **RESET** button on its right side (callout 1-12 of Fig. 1) with the end of a paper clip.

Remove the batteries when storing the instrument for an extended period of time.

Do not drop or disassemble the instrument or immerse it in water.

OPTIONAL ACCESSORIES

Optional accessories available from General Tools & Instruments include:

- Additional TPK500 thermocouple probes
- TPK900 thermocouple probes with a measurement range of -50° to 900°F (-45° to 482°C)
- TPK05 thermocouple probes with a measurement range of -40° to 1562°F (-40° to 850°C)
- TPK03 thermocouple probes with a measurement range of -40° to 950°F (-40° to 510°C)
- Other "K" type thermocouple probes and extenders of various diameters, types and measurement ranges
- 9VDC adapter for a 110V power supply (General P/N AC1)

Types "J", "T", "E", "R" and "S" thermocouples are widely available from industrial distributors.

WARRANTY INFORMATION

General Tools & Instruments' (General's) DT4208SD 12-Channel Temperature Recorder with Excel-formatted Data Logging SD Card is warranted to the original purchaser to be free from defects in material and workmanship. Subject to certain restrictions, General will repair or replace this instrument if, after examination, the company determines it to be defective in material or workmanship for a period of one year.

This warranty does not apply to damages that General determines to be from an attempted repair by non-authorized personnel or misuse, alterations, normal wear and tear, or accidental damage. The defective unit must be returned to General Tools & Instruments or to a General-authorized service center, freight prepaid and insured.

Acceptance of the exclusive repair and replacement remedies described herein is a condition of the contract for purchase of this product. In no event shall General be liable for any incidental, special, consequential or punitive damages, or for any cost, attorneys' fees, expenses, or losses alleged to be a consequence of any damage due to failure of, or defect in any product including, but not limited to, any claims for loss of profits.

RETURN FOR REPAIR POLICY

Every effort has been made to provide you with a reliable product of superior quality. However, in the event your instrument requires repair, please contact our Customer Service to obtain an RGA (Return Goods Authorization) number before forwarding the unit via prepaid freight to the attention of our Service Center at this address:

General Tools & Instruments
80 White Street
New York, NY 10013
212-431-6100

Remember to include a copy of your proof of purchase, your return address, and your phone number and/or e-mail address.



Specialty Tools & Instruments

GENERAL TOOLS & INSTRUMENTS

80 White Street

New York, NY 10013-3567

PHONE (212) 431-6100

FAX (212) 431-6499

TOLL FREE (800) 697-8665

e-mail: sales@generaltools.com

www.generaltools.com

DT4208SD User's Manual

Specifications subject to change without notice

©2013 GENERAL TOOLS & INSTRUMENTS

NOTICE - WE ARE NOT RESPONSIBLE FOR TYPOGRAPHICAL ERRORS.

MAN# DT4208SD

3/27/13