

# 400/600A MEDIUM SPLIT CORE CURRENT TRANSFORMERS



Split-core current transformers provide linear output voltage that is directly proportional to the input current. These transformers are safely and easily installed over existing electrical power lines without disconnecting the lines or interrupting service.

DENT's energy monitoring components are used for a variety of applications including building automation, tenant submetering, performance verification, energy management, and new technology assessment.

## KEY SPECIFICATIONS

|                      |   |
|----------------------|---|
| <b>Window Size</b>   | 1.25" (3.20 cm)                                 |
| <b>Current Range</b> | 400A Model: 8—480A AC<br>600A Model: 12—720A AC |
| <b>Output</b>        | 333.3 mV at rated current                       |
| <b>Ratio Error*</b>  | <1% at rated current (typical)                  |
| <b>Phase Error*</b>  | <1° at rated current (typical)                  |

## ELECTRICAL

|                        |   |
|------------------------|---|
| <b>Output</b>          | 333.3 mV at rated current                             |
| <b>Wire Polarity</b>   | White = Hi, positive (+)<br>Black = Low, negative (-) |
| <b>Frequency Range</b> | 50/60 Hz  |

## MECHANICAL

|                              |                                  |
|------------------------------|----------------------------------|
| <b>Case Material</b>         | White Nylon, UL 94v0             |
| <b>Leads</b>                 | 3 M (9.8'), twisted pair, 24 AWG |
| <b>Operating Temperature</b> | -40° to 55°C (-40° to 131°F)     |

## SAFETY

|                        |   |
|------------------------|---|
| <b>Working Voltage</b> |  600 VAC, Category III<br>UL 2808<br>EN 61869-1<br>EN 61869-2<br>EN 61000-6-1<br>CAN/CSA STD C22.2<br>No. 61010-1-12 |
| <b>Certification</b>   |   |

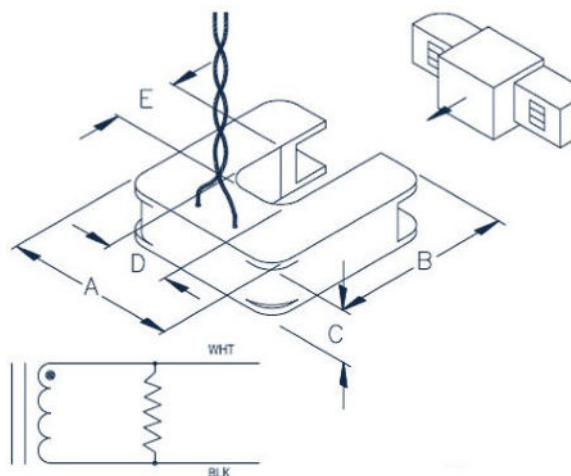
## CONTACT US

**DENT Instruments, Inc.**  
Energy & Power Measurement Solutions  
An ISO 9001:2008 Certified Company

Contact:  
Industrial Process Measurement, Inc.  
3910 Park Ave, Unit #7  
Edison, NJ 08820 USA  
(732) 632-6400  
support@instrumentation2000.com  
<https://www.instrumentation2000.com/>



| DENT P/N    | NOMINAL RATING (Amps) | USEFUL CURRENT RANGE (Amps) | DIMENSIONS      |                 |                 |                 |                 |
|-------------|-----------------------|-----------------------------|-----------------|-----------------|-----------------|-----------------|-----------------|
|             |                       |                             | A               | B               | C               | D               | E               |
| CT-SCM-0400 | 400                   | 8—480A AC                   | 8.26 cm (3.25") | 8.51 cm (3.35") | 2.54 cm (1.00") | 3.18 cm (1.25") | 3.18 cm (1.25") |
| CT-SCM-0600 | 600                   | 12—720A AC                  |                 |                 |                 |                 |                 |



## PART NUMBERS

|                 |                        |
|-----------------|------------------------|
| CT-SCM-0400-U/B | 400A Medium Split Core |
| CT-SCM-0600-U/B | 600A Medium Split Core |