

1000A LARGE SPLIT CORE CURRENT TRANSFORMER



Split-core current transformers provide linear output voltage that is directly proportional to the input current. These transformers are safely and easily installed over existing electrical power lines without disconnecting the lines or interrupting service.

DENT's energy monitoring components are used for a variety of applications including building automation, tenant submetering, performance verification, energy management, and new technology assessment.

KEY SPECIFICATIONS

Window Size	2.0" (5.1 cm)
Current Range	20 - 1300A AC
Output	333 mV at rated current
Ratio Error	<1% at rated current (typical)
Phase Error	<2° at rated current (typical)

ELECTRICAL

Output	333 mV at rated current
Wire Polarity	White = Hi, positive (+) Black = Low, negative (-)
Frequency Range	50 to 400 Hz

MECHANICAL

Case Material	Epoxy encapsulated housing
Leads	2.7 M (8'), twisted pair, 20 AWG
Operating Temperature	-20° to 55°C (-4° to 131°F)

SAFETY

Working Voltage	600 VAC, Category III
Dielectric Strength	5000 VAC around case 600V rated leads
Certification	Conforms to: UL STD 61010-1 EN 60044-1 Certified to: CAN/CSA STD C22.2 No. 61010-1



PART NUMBERS

CT-SCL-1000-U/B	1000A Large Split Core
-----------------	------------------------

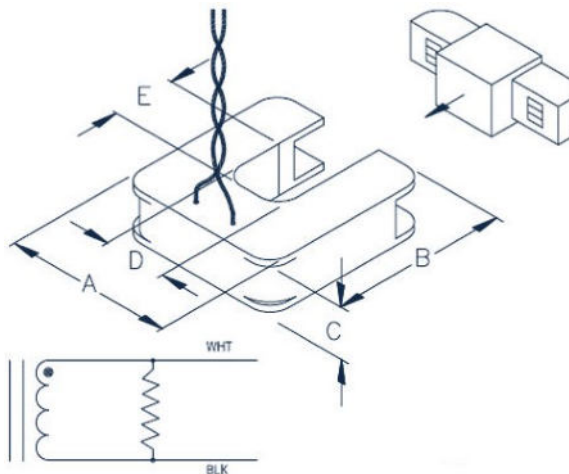
CONTACT US

DENT Instruments, Inc.
Energy & Power Measurement Solutions

Contact:
Industrial Process Measurement, Inc.
3910 Park Ave, Unit #7
Edison, NJ 08820 USA
(732) 632-6400
support@instrumentation2000.com
<https://www.instrumentation2000.com/>



DENT P/N	NOMINAL RATING (Amps)	USEFUL CURRENT RANGE (Amps)	DIMENSIONS				
			A	B	C	D	E
CT-SCL-1000	1000	20 - 1300	12.07 cm (4.8")	12.70 cm (5.0")	3.05 cm (1.2")	5.1 cm (2.0")	5.08 cm (2.0")



All specifications contained in this document are subject to change without notice.
© DENT INSTRUMENTS, INC.
rev071219