

DATA LOGGERS

Simple Logger® II 4-Channel *Bluetooth* Edition

Model L264

Four channel logger with AC/DC voltage inputs that directly measure and record up to 600V

► SPECIFICATIONS

MODEL	L264
ELECTRICAL	
Channels	Four
Input Connection	Five recessed 4mm banana jacks
Input Range	0 to 600Vac/dc
Accuracy (50/60Hz)	0 to 5V unspecified 5 to 50V: ±(0.5% of Reading + 1V) 50 to 600V: ±(0.5% of Reading + 0.5V)
Input Impedance	16MΩ
Sample Rate	64 samples/cycle
Storage Rate	Programmable from 125ms to 1 per day
Storage Modes	Start/Stop, FIFO, Extended Recording Mode (XRM™) and Store on Alarm
Recording Length	15 minutes to 8 weeks, programmable using DataView®
Memory	1,000,000 measurements (2MB). The recorded data is stored in non-volatile memory and will be retained even if the battery is low or removed.
Communication	<i>Bluetooth</i> connection (communicates up to 30 ft)
Power Source	4 x 1.5V C-cell Alkaline batteries (included)
Battery Life	Up to 180 days (dependent on storage rate/recording length)
MECHANICAL	
Dimensions	5.904 x 5.904 x 3.568" (150 x 150 x 91mm)
Weight (with battery)	2.1 lbs (0.95kg)
Case	UL94-V0
Vibration	IEC 68-2-6 (1.5mm, 10 to 55Hz)
Shock	IEC 68-2-27 (30G)
Drop	IEC 68-2-32 (1m)

► PRODUCT INCLUDES

Bluetooth USB adapter, set of 5 color-coded (4 red/1 black) 5 ft leads with color-coded alligator clips, twelve color-coded input ID markers, mounting hardware, 4 x 1.5V C-Cell Alkaline batteries, USB cable for firmware updates, and USB stick supplied with DataView® software and user manual.



cover closed

► FEATURES

- TRMS voltage recording up to 600Vac/dc
- 64 samples per cycle
- Programmable storage rates from 8 per second to 1 every day
- 4 user selectable storage modes
- Stores up to 1,000,000 measurements in non-volatile memory
- Powered by standard Alkaline batteries for a period of up to 180 days
- Lightweight, compact, fits anywhere
- 6 LED indicators quickly and clearly display logger status
- Includes FREE DataView® software for data storage, real-time display, analysis and report generation
- Includes set of 5 color-coded (4 red/1 black) 5 ft leads with color-coded alligator clips
- Wireless *Bluetooth* data communication (Class 2 *Bluetooth* module included)
- Safety Ratings 600V CAT IV; 1000V CAT III

► APPLICATIONS

- Single/split phase and poly phase voltage monitoring
- Neutral and ground voltage monitoring
- Intermittent problem detection
- Harmonic voltage monitoring using DataView® software
- Residential power monitoring
- DC voltage monitoring

CATALOG NO. DESCRIPTION

2126.23 Simple Logger® II Model L264 (4-Channel, TRMS, *Bluetooth*, 600Vac/dc, DataView® software)

DataView®

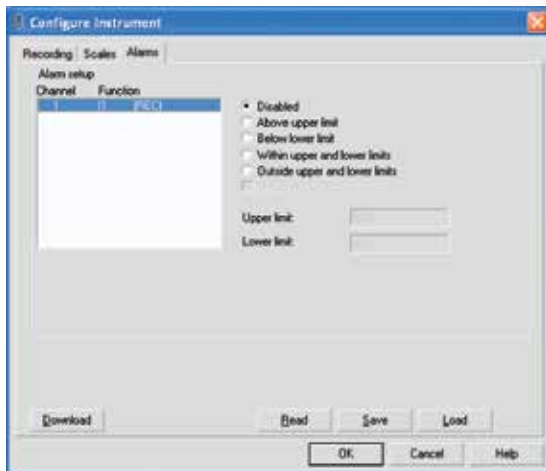
Data Analysis and Reporting Software for Data Loggers



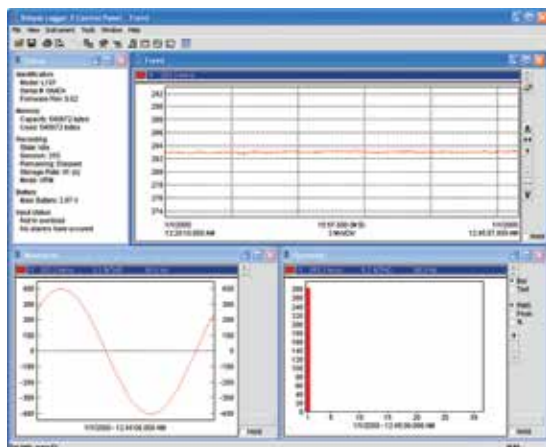
Typical DataView® Functional Displays



Quick and simple configuration of all functions and settings from one dialog box.



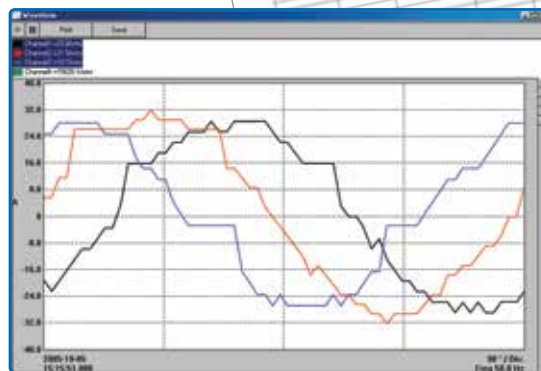
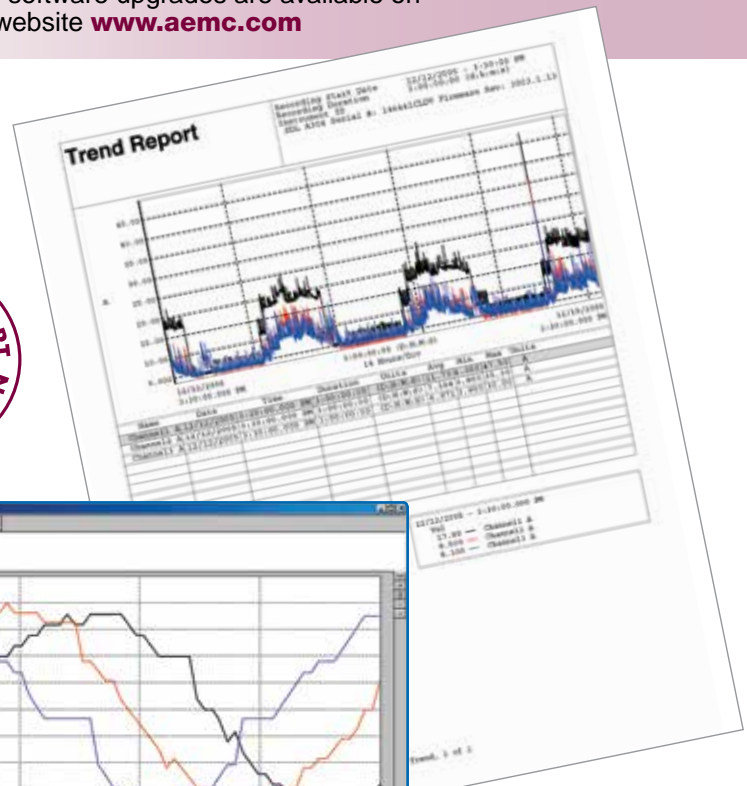
Configure all alarm functions with straightforward selections.



Real-time view of trend, waveform and status screens.

Configure all data logger functions of the Simple Logger® II Models

- Display and analyze real-time data on your PC
- Configure all data logger functions and parameters from your PC including sample rate, recording length, channel configuration and more
- Create and store a complete library of configurations that can be uploaded to the logger as needed
- Zoom in and out and pan through sections of the graph to analyze the data
- Download, display and analyze recorded data
- Display waveforms, trend graphs, harmonics (AC models) and text summaries
- Create custom views and reports
- Print reports using standard or custom templates you design
- Free software upgrades are available on our website www.aemc.com



Real-time display of all active inputs on computer through DataView® software.