

# MEGOHMMETERS

## 10,000 & 15,000V Digital

Special product features

### Models 6550 & 6555

**Expert tools for testing insulation safely and accurately; ideal for use on rotating machinery and cables operating at higher voltages**



### ► FEATURES

- True Megohmmeter®
- Fixed or programmable test voltage from 40V to 10kV/15kV
- Wide measurement range from 10kΩ to 30TΩ
- 5mA charging current
- Step voltage testing
- Ramp voltage testing
- Automatic calculation of DAR / PI / DD / ΔR (ppm/V) ratios
- Large, backlit graphical LCD screen with digital display, bargraph and R(t)+V(t), I(t) and I(V) graphs
- Multiple test modes: voltage ramp and step with “Burn-In”, “Early-Break” and “I-Limit” modes
- Three filter settings to optimize measurement stability
- Calculation of R at a reference temperature
- Storage of 80,000 measurements
- Includes DataView® software for data storage, real-time display, analysis and report generation
- Optically-isolated USB communication for transfer onto PC and report generation with DataView® software

### ► SPECIFICATIONS

MODELS	6550	6555
<b>INSULATION TESTS</b>		
<b>Test Voltage</b>	500V 1000V 2500V 5000V 10,000V 15,000V	10kΩ to 2000GΩ (2TΩ) 10kΩ to 4000GΩ (4TΩ) 10kΩ to 10,000GΩ (10TΩ) 10kΩ to 15,000GΩ (15TΩ) 10kΩ to 25,000GΩ (25TΩ)
<b>Fixed Test Voltages</b>	500/1000/2500/5000/ 10,000V	500/1000/2500/5000/ 10,000/15,000V
<b>Variable Voltages</b>	Variable: 40 to 10kV Three user programmable voltage schemes	Variable: 40 to 15kV Three user programmable voltage schemes
<b>Ramp Mode</b>	Programmable ramps: start voltage/end voltage/duration	
<b>Ramp Configuration Range</b>	40 to 1100V/500 to 10,000V	40 to 1100V/500 to 15,000V
<b>Step Mode</b>	Up to 10 steps (voltage and duration configurable for each step)	
<b>Voltage Measurement After Test</b>	0 to 2500V <sub>AC</sub> ; 0 to 4000V <sub>DC</sub>	
<b>Capacitance Measurement</b>	0.05 to 9.999μF/10.00 to 49.99μF	
<b>Leakage Current Measurement</b>	0 to 8mA	
<b>Discharge After Test</b>	Yes/Automatic	
<b>Additional Test Stop Modes</b>	I-Limit Early-Break Timer	Programmable: 0.2 to 5mA di/dt Up to 99 minutes 59 seconds
<b>Burn Mode</b>	Constant testing	
<b>Ratio Calculation</b>	PI, DAR, DD	
<b>Calculation of R at ref. T°</b>	Yes	
<b>Measurement Display Filter</b>	3 filters with 3 possible time-constants	
<b>Graphs on Display</b>	R(t)+V(t); I(t); I(V)	
<b>Storage</b>	256 registers, stores 80,000 points: R, V, I and date	
<b>Communication</b>	USB optically-isolated port	
<b>PC Software</b>	DataView®	
<b>Power Supply</b>	NiMH rechargeable batteries, two 9.6V 4Ah battery packs charging by external voltage: 90 to 260V; 50/60Hz	
<b>Battery Charging</b>	Battery charging allowed while performing insulation measurements	
<b>Electrical Safety</b>	1000V CAT IV; IEC61010-1 and IEC 61557	
<b>EMC, Mechanical Protection, Altitude</b>	EN 61326-1, IP54, 3000m	
<b>Dimensions / Weight</b>	13.39 x 11.81 x 7.87" (340 x 300 x 200mm)/approx. 6.2kg (13.7lb)	

### ► PRODUCT INCLUDES



#### ► USB Stick

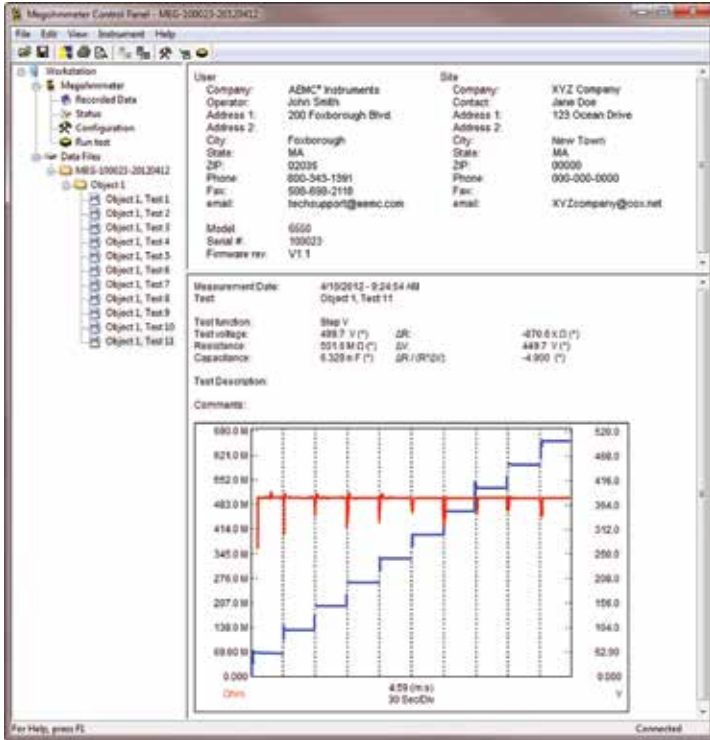
Quick start user guide, and USB stick supplied with DataView® software and user manual.



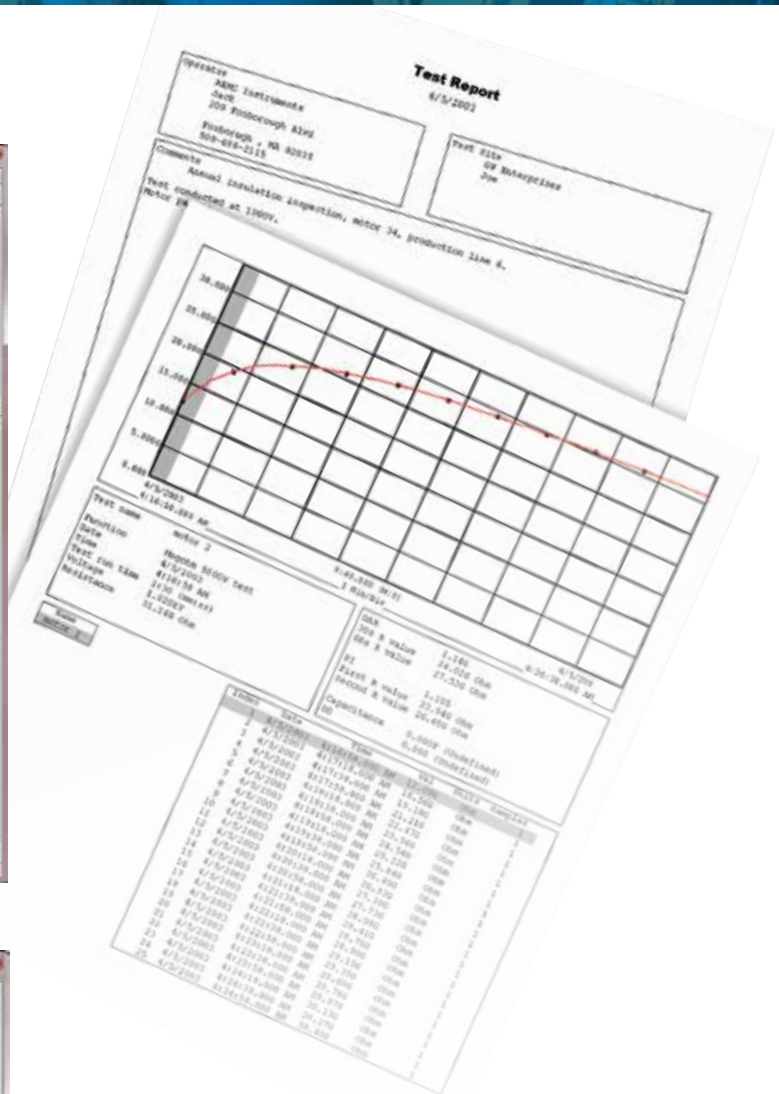
Small classic tool bag, set of color-coded (red/blue/black) 9 ft (15kV) integral leads and alligator clips (1000V CAT IV), one 15kV jumper lead (blue), set of two color-coded test probes (red/black-1000V CAT IV), optical USB cable, 115V US power cord, 9.6V rechargeable NiMH batteries.



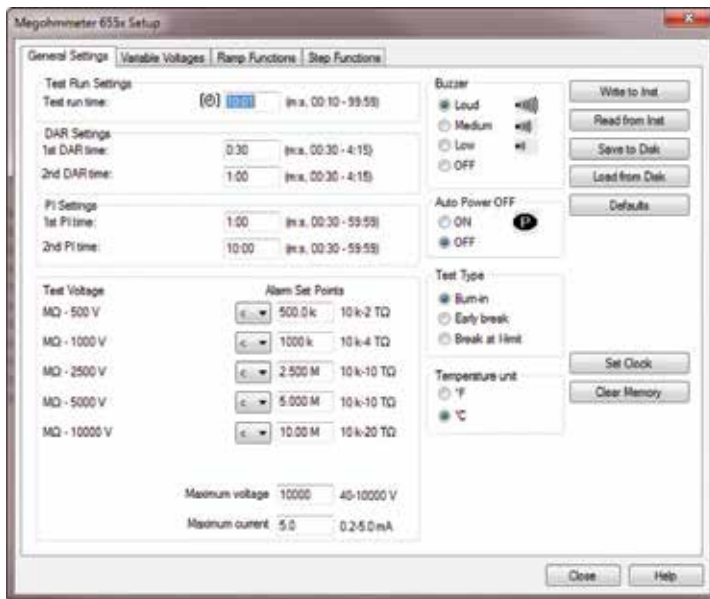
# DataView® Displays



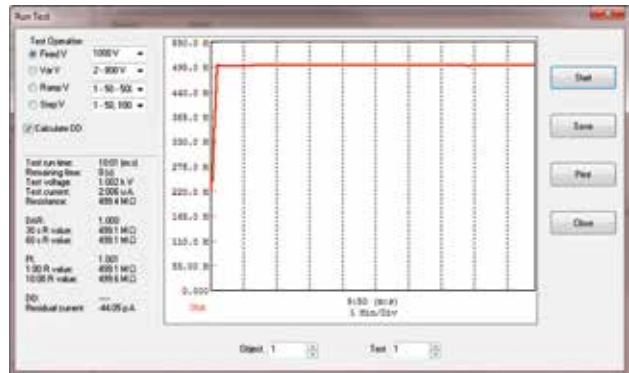
All stored test results presented on screen.



Typical and customized reports generated from DataView® software.



Clear and straight forward set up of parameters.



Real-time display of measurement results.

CATALOG NO.	DESCRIPTION
2130.31	Megohmmeter Model 6550 (Graphical, Analog Bargraph, Backlight, Alarm, Timer, 500V, 1000V, 2500V, 5000V, 10kV, Ramp, StepV, Variable, Auto DAR/PI/DD, USB Stick w/DataView® software)
2130.32	Megohmmeter Model 6555 (Graphical, Analog Bargraph, Backlight, Alarm, Timer, 500V, 1000V, 2500V, 5000V, 10kV, 15kV, Ramp, StepV, Variable, Auto DAR/PI/DD, USB Stick w/DataView® software)



# DataView®

## Data Analysis and Reporting Software for Megohmmeters



Configure all functions of the Megohmmeter Models 1060, 5060, 5070, 6550 & 6555



- Print reports of all test results
- Select test voltage and run tests from your computer with a simple click and execute process
- Capture and display data in real-time
- Retrieve data from the instrument's memory:
  - Over 1500 insulation resistance measurements
  - Over 4000 resistance measurements
- Display DAR and PI ratios
- Plot graphs of manual and timed tests
- Include your analysis comments section with the report
- Store a library of setups for different applications
- Certification of results through report generation
- Free updates are available on our website [www.aemc.com](http://www.aemc.com)

### Typical DataView® Functional Displays



Model 5070 includes Ramp Function which allows programming of three different ramp test profiles, each containing up to five voltage steps between 40 and 5100V and time per step of up to 10 hours.



Four tabbed dialog boxes allow for clear and easy setup of all functions of the Model 5070, including setup for variable voltage and alarm set points, as well as step voltage tests and temperature compensation.

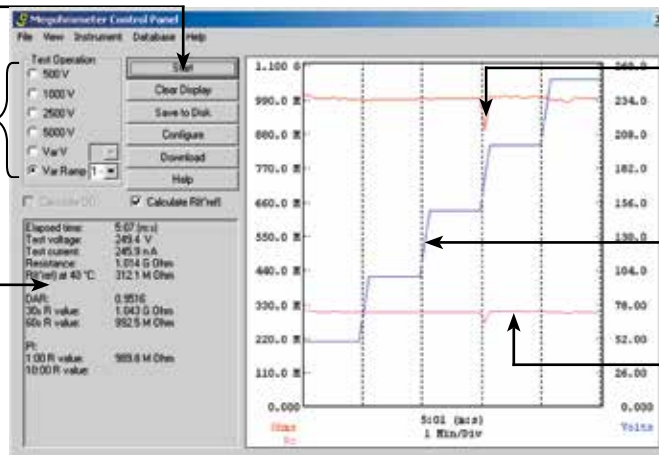


Clear and easy setup from one dialog box for Model 5060.

One button operation starts test and graphs results

Test voltage selection

Test result status box displays complete test results in real-time



Insulation resistance during the test run

Step voltage during the test run

Insulation resistance with temperature compensation

Run test and display text and graphical results from one dialog box. Model 5070 also displays step voltage.

